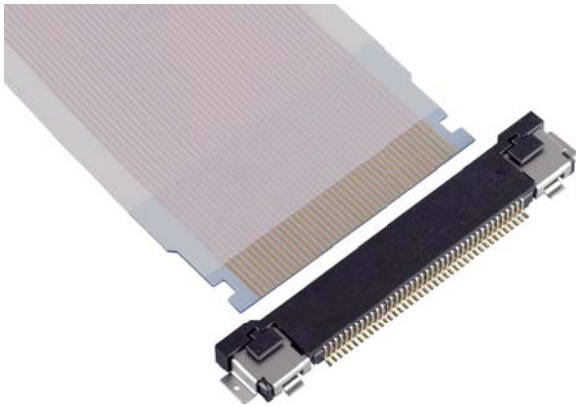


EVAFLEX® 5 - SE

-40°C~125°C
0.5mm Pitch
Horizontal Type Non-ZIF Type

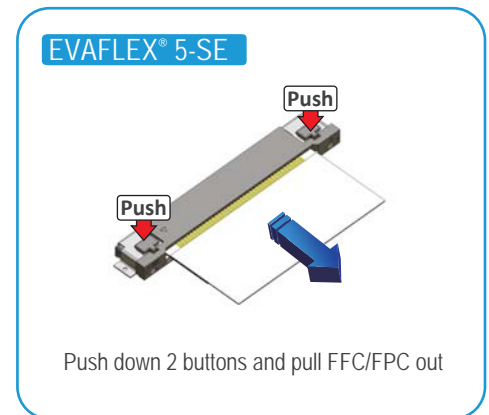


EVAFLEX® 5-SE is a totally new concept for FFC/FPC connector focused on efficient operation and reliability. Only one action regard to insert the FFC/FPC, connection reliability is dramatically improved by the side lock design. EVAFLEX® 5-SE is available for use under operation temp from -40°C to 125°C such as automotive and industrial that require a rugged FFC/FPC connector.

【Features】

- **Easy, reliable, high productivity**
High productivity is provided by an easy and reliable mating operation by Non-ZIF and auto lock structures
- **Audible click and tactile feel**
Insures proper mating and positive locking of FFC/FPC^{*1}
- **Higher reliable connection**
Highly reliable contact by I-PEX's unique W-point contact structure
- **High retention force lock structure**
Prevents the FFC/FPC from losing connection during high shock and vibration situations
- **Cable contact : Top**

【FFC/FPC Un-locking method】



【Number of Positions】

10p, 15p, 22p, 30p, 40p
45p, 50p, 55p, 60p

【Applicable cable】

FFC or FPC^{*2}

【Ordering Code】

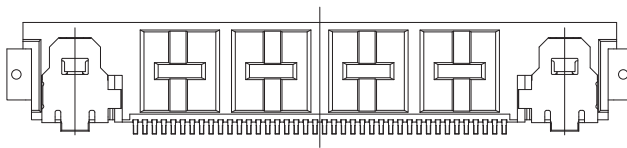
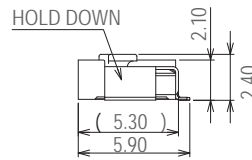
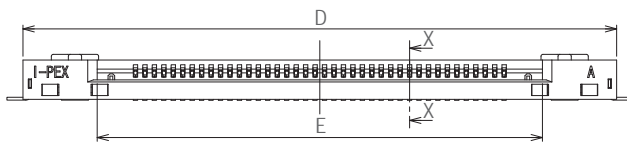
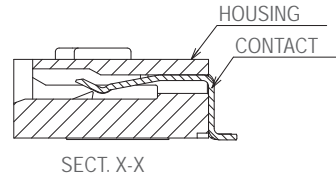
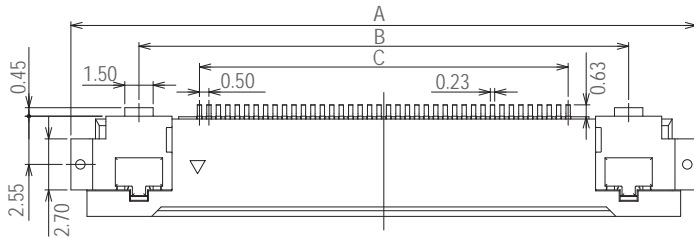
20526-0 ** E - 01
① ②

①	POS.	15: 15pos	22: 22pos	30: 30pos
		40: 40pos	45: 45pos	50: 50pos
		55: 55pos	60: 60pos	
②	Packaging	E	Emboss Tape	

*1 : By a combination of FFC/FPC, audible click and tactile feel change may occur.

*2 : Please contact us for the FFC/FPC drawing and specification.

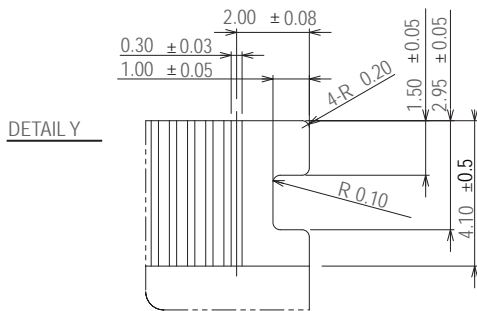
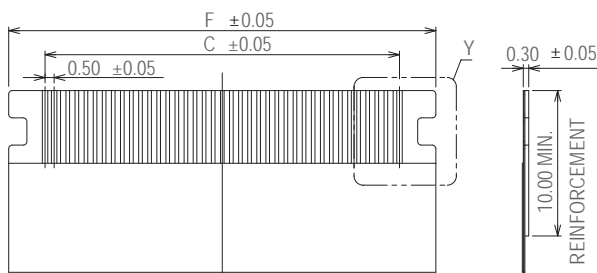
POS.	A	B	C	D	E	F	G	H
10	18.10	10.90	4.50	16.40	8.56	8.50	5.50	17.00
15	20.60	13.40	7.00	18.90	11.06	11.00	8.00	19.50
22	24.10	16.90	10.50	22.40	14.56	14.50	11.50	23.00
30	28.10	20.90	14.50	26.40	18.56	18.50	15.50	27.00
40	33.10	25.90	19.50	31.40	23.56	23.50	20.50	32.00
45	35.60	28.40	22.00	33.90	26.06	26.00	23.00	34.50
50	38.10	30.90	24.50	36.40	28.56	28.50	25.50	37.00
55	40.60	33.40	27.00	38.90	31.06	31.00	28.00	39.50
60	43.10	35.90	29.50	41.40	33.56	33.50	30.50	42.00



【Material / Finish】

Parts	Material	Plating / Color
HOUSING	LCP UL94V-0	BLACK
CONTACT	COPPER ALLOY	Au
HOLD DOWN	COPPER ALLOY	Sn

RECOMMENDED FFC/FPC LAYOUT



RECOMMENDED PCB LAYOUT

