

100W 940nm Single Bar Laser Chip

New high power single bar laser chip(100W) with 19 emitters, the emitter width only have 150um and bar length 10mm, small bar pitch 500um allow the chip working stability. The life span is long 20 hours continuous use. This is the most stable, most efficient and inexpensive way to produce high quality laser beams.

Feature

2000um cavity length, 940nm center wavelength

0.35nm/°C wavelength temperature coefficient

Long working lifetime over 10000hours

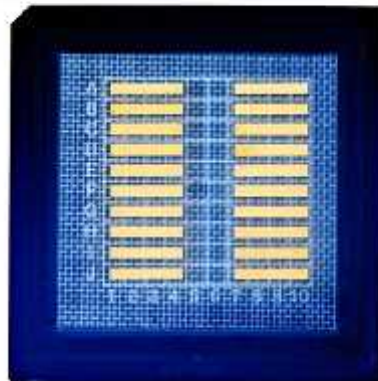
High reliability and stability

Application

Medical

Scientific

Fiber source



Date sheet

Item No: LC940SB100

Item Name: 100W 940nm Single Bar Laser Chip

Optical	Typ
Central Wavelength	940±10nm
Output Power	100W
Emitter Quantity	19
Emitter Width	150um
Pitch	500um
Cavity Length	2000mm
Bar Length	10mm
Bar Thickness	110um
Electrical	
Operating Current Iop	100A
Threshold Current Ith	9A
Operating Voltage Vop	2V
Thermal	
Test Temperature	25°C
Storage Temperature	-40~+80°C
Wavelength Temperature Coefficient	0.35nm/°C

LIV Chart

