

# 15W 878nm Single Emitter Laser Chip

## Features:

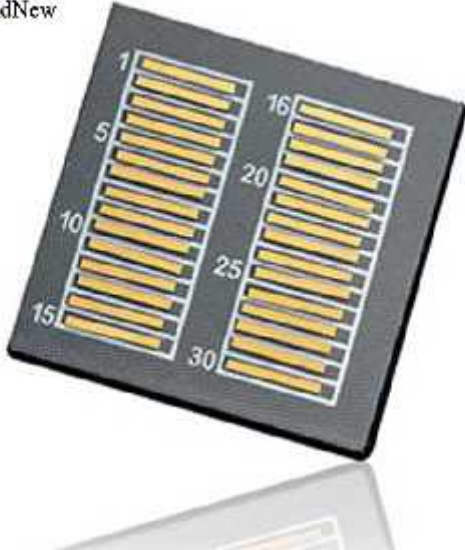
High power bare chip, output power up to 15W

Long lifetime and high efficiency

High PCE

High Brightness

Widely used in Industrial pumping, Laser illumination, R&D.



## Data sheet

Item No: LC878SE15

Item Name: 15W 878nm Single Emitter Laser Chip

### Optical

Center Wavelength	878nm
Output Power	15W
Center Wave Deviation	3nm
Working Mode	CW

### Geometrical

Emitter Width	190um
Emitter Pitch	400um
Cavity length	4000um
Thickness	105um

### Electrical

Operating Current Iop	15A
Threshold Current Ith	1.5A
Operating Voltage Vop	1.8V
Slop efficiency	1.2w/A
Conversion efficiency	60%
Spectral Bandwidth	5nm

### Thermal

Operating Temperature	25°C
Storage Temperature	-30~70°C