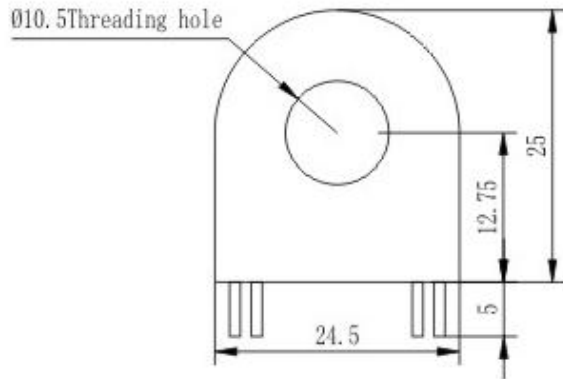


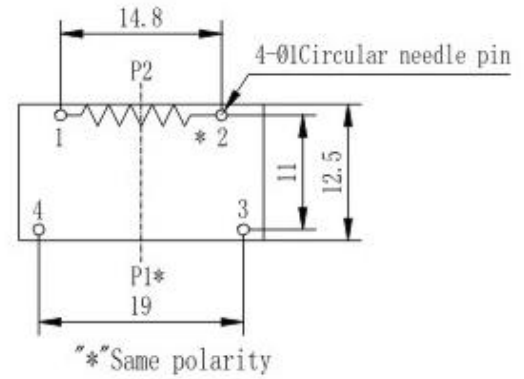
ZEMCT130B Current Transformer

Small size, high accuracy, good consistency, for power measurement and protection

Structural parameter:



Front view

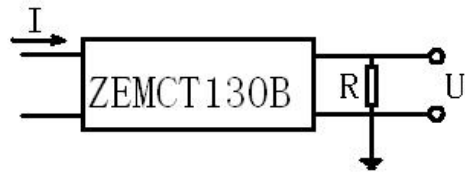
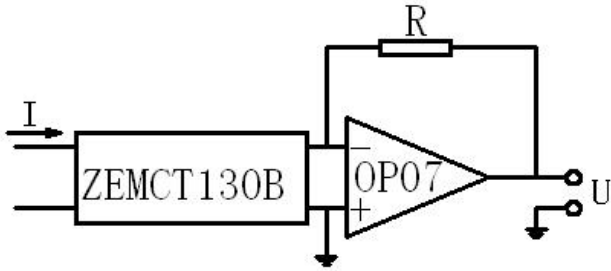


Bottom view

The main technical parameter:

Model	ZEMCT130B
input current	0~100A (50Ω)
Rated output current	2.5mA at 5A
turns ratio	2000:1
phase angle error (rated input)	≤60' (50Ω)
linearity	0.5%
Accuracy class	0.5
isolation voltage	3000V
application	protection
Encapsulation	Epoxy
installation	PCB mounting
operating temperature	-40℃~+70℃

Direction for use:



$$U = \frac{I}{2000} \cdot R$$

I: input current
R: sampling resistor
U: sampling voltage

Figure I

Figure II

1. The typical usage of the product is for the active output (Figure I). R is a sampling resistor, c and r is used for phase compensation.
2. The product can be directly through the resistance sampling, easy to use (Figure II).
3. The instructions are for reference only, specific parameter is subject to specifications (acknowledgment).