

Product Parameters:

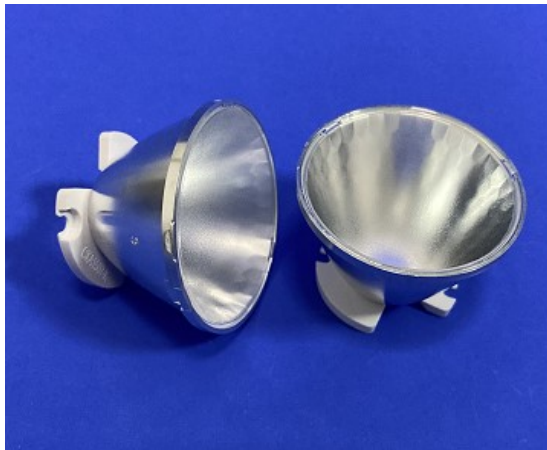
- * Product Name: COB Led Reflector
- * Part Number : KB-D4527-17RF-K
KB-D4527-24RF-K
KB-D4527-36RF-K
KB-D4527-60RF-K

- * Product Size : $\Phi 45*\Phi 15*H27.3mm$
- * Beam Angle : 17 degree(half angle)
24 degree(half angle)
36 degree(half angle)
60 degree(half angle)

- * Product Inlude : Reflector+Holder+Cover
- * Material : PC with coating
- * Tolerance: $\pm 0.1mm$
- * Operating Temperature : $-40 \sim 110^{\circ}C$
- * Lens Light Efficiency : 86~88%
- * Assembly : Frame
- * Match Led : Cree -CXA13xx/15xx
Citizen-CLL020 / Bridgelux-V8/V10
1215 /Luminus-CXM-6/7/9

* Direction for use

- 1, Please use some soft paper or pure water to clean lens (reflector)
- 2, Don't use any industrial solvent to clean lens surface , such as alcohol
- 3, Storage environment : Temperature $0\sim 40^{\circ}C$, Humidity 30%~95%
- 4, This kind of lens can make the lighting more concentrated, and it's made from transparent material , so please do not open the packages until you use them, in case of the dust and other pollutions.

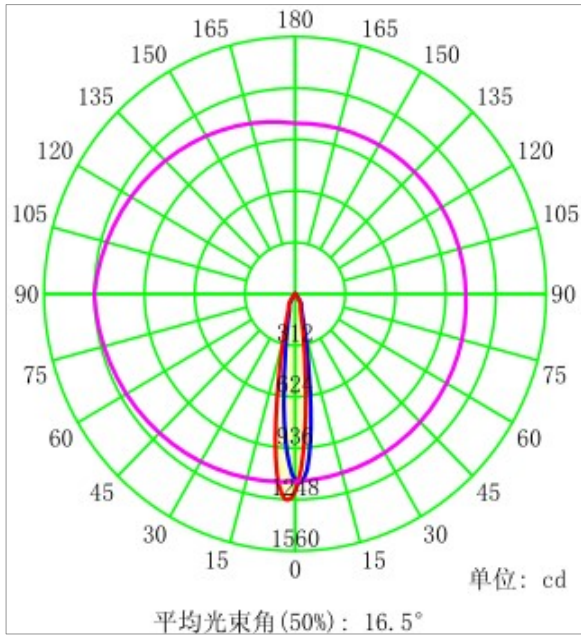


Product Package:

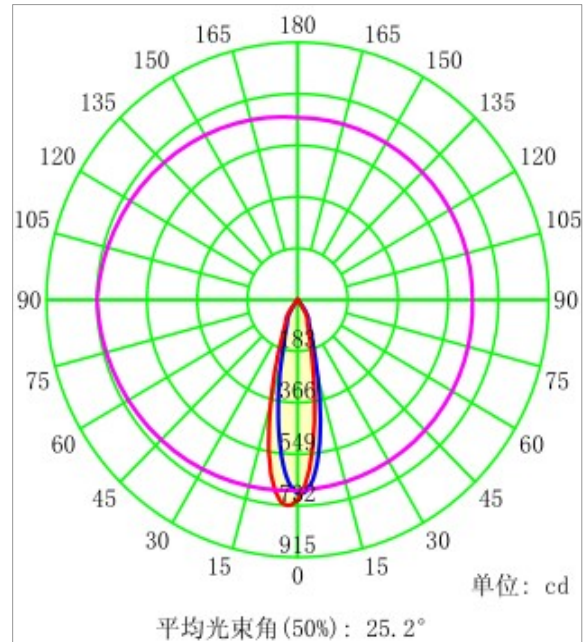


Optical Characteristics:

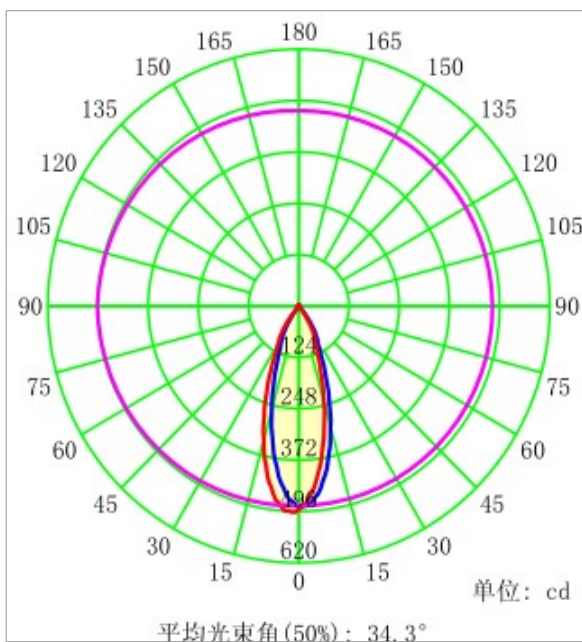
Part Number:KB-D4527-17F-K



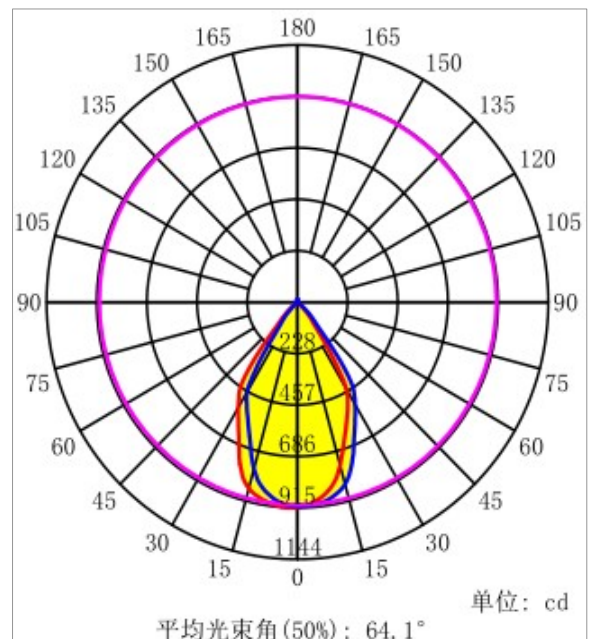
Part Number:KB-D4527-24RF-K



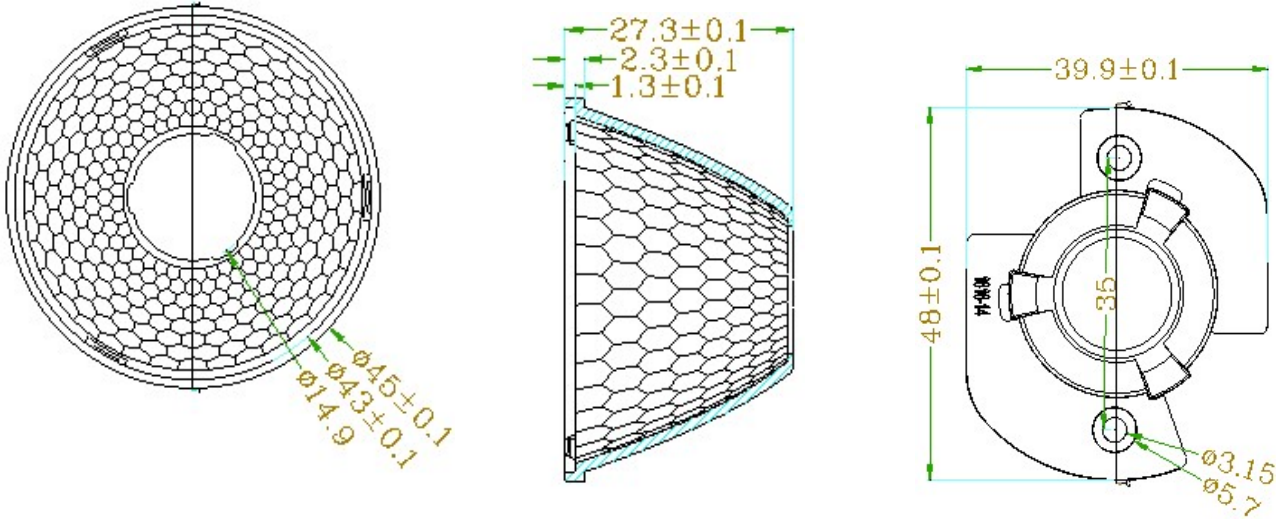
Part Number:KB-D4527-36RF-K



Part Number:KB-D4527-60RF-K

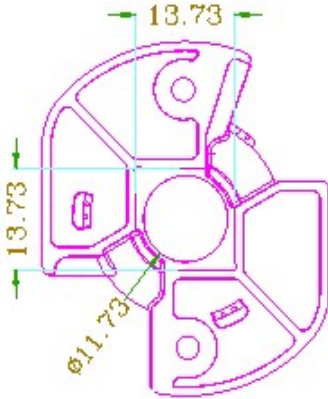


Mechanical Characteristics:

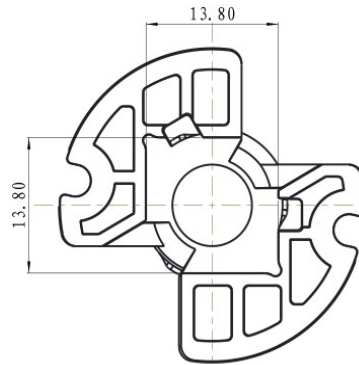


Matched COB Holder

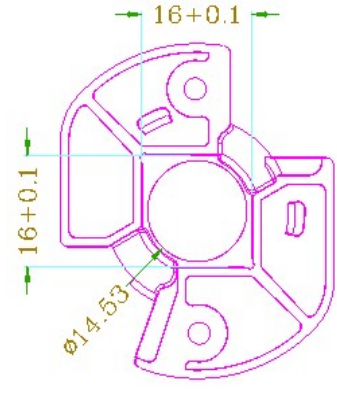
Citizen-CLL020/022



CREE-CXA1304



CREE-CXA1507/1515



Solderless holder

