

200W 976nm CW Single Bar Diode Laser Chip

High power 200W 976nm Single Bar Diode Laser Chip , unmounted diode laser bar, with 600W of CW output power, designed for the most demanding applications. And our Laser Chip products are easily assembled using standard soldering methods. On request, we can also produce bars with continuous p-side metallization and adapted facet coatings, using low AR coatings for the assembly of external resonators.

Feature:

Available With Any Micro channel Cooled Configuration

Low beam divergence and small light emitting aperture

High power and high beam intensity IR laser radiation

Wide variety of bar configurations

High brightness

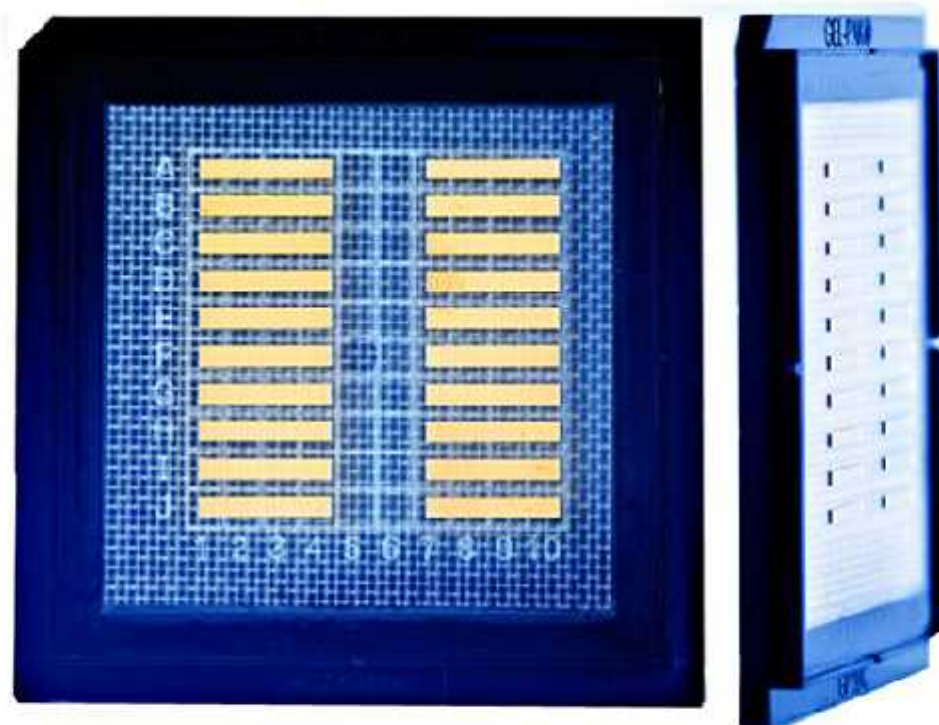
Application:

Industrial pumping, Laser illumination

Free space optical communication

Wind Sensing Lidar

Autonomous Driving Lidar



Data Sheet

Item No: LC976SB200

Item Name: 200W 976nm CW Single Bar Diode Laser Chip

Optical	Min	Typ	Max
Central Wavelength	966nm	976nm	990nm
Output Power		200W	
Working Mode		CW	
Spectrum Width		5nm	
Number of Emitter		23	
Emitter Width		200um	
Emitter Pitch		400um	

Filling Factor	50%		
Bar Width	9900um	10000um	10100um
Cavity Length	3990	4000um	4010
Thickness	100um	120um	140um
Fast Axis Divergence(FWHM)	42deg		
Slow Axis Divergence (FWHM)	12deg		
Electrical			
Operating Current Iop	100A		220A
Threshold Current Ith	24A		28A
Operating Voltage Vop	1.75V		1.85V
Thermal			
Operating Temperature	25		
Wavelength Temperature Coefficient	0.35nm/		