



MIL-DTL-32139 Nano-D Connectors

R06 Series Crimping Connectors

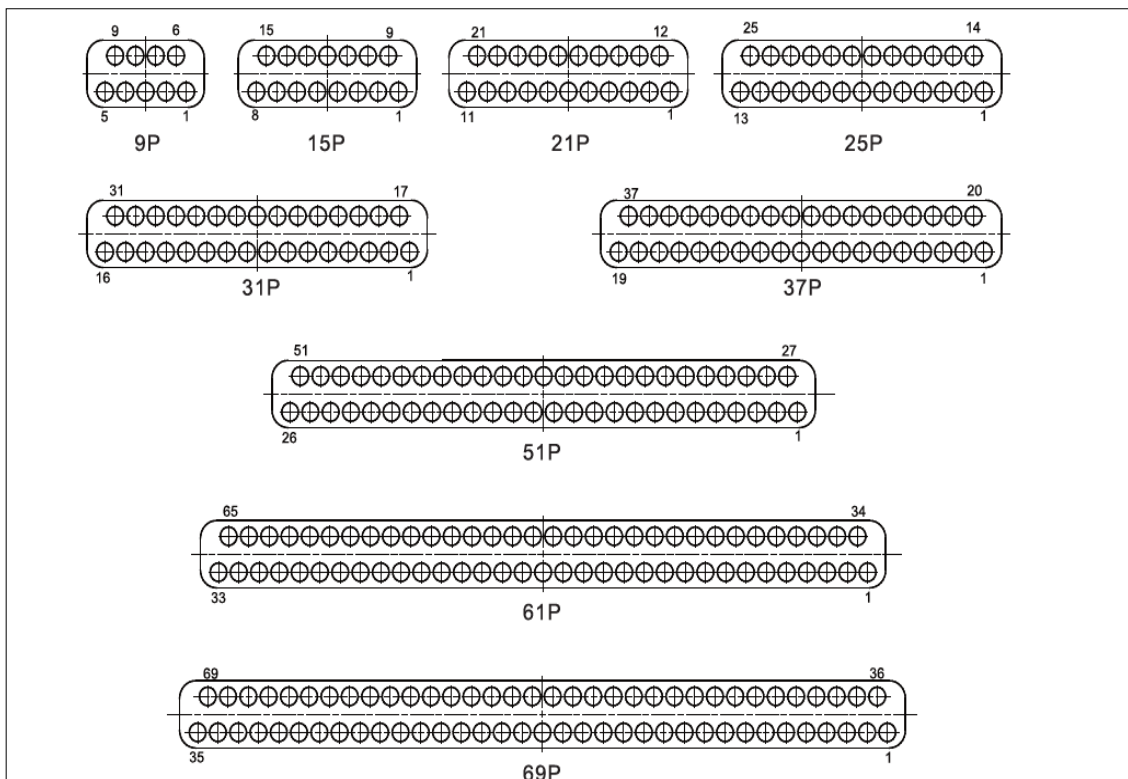
Brief Introduction

- Contacts: 9, 15, 21, 25, 31, 37, 51, 65, 69 pins
- Twist flexible nano pin (twist pin), 0.635mm pitch, nano miniature outline dimension.
- Screw nut locking, it is gently when insert and extract, stably locked.
- It is used for all kinds for electric circuit system interconnection which have high density, nano, light, highly reliable requirement, it can meet light and miniaturize demand.
- Plug with twist pin, receptacle with socket, free terminal with locking screw, fixed terminal with nut, standard mated connector locked by screw and nut.
- Standard: MIL-DTL-32139.
- The sectional area of crimp conductive cable is 0.035mm^2 .
- Undefined tolerance is $\pm 0.13\text{mm}$

Specifications

- | | | | |
|---|---------------------------------|--------------------------|----------------------------------|
| ■ Environment: | -55°C~+125°C | ■ Contact resistance: | $\leq 21\text{m}\Omega$ |
| ■ Vibration: | 10HZ~2000HZ 196m/s ² | ■ Insulation resistance: | $\geq 5000\text{M}\Omega$ 100VDC |
| ■ Shock: | 980m/s ² 6ms | ■ Dielectric strength: | 250V |
| ■ Rated current: | 1A | ■ Machine life: | 200 times |
| ■ Random vibration: power spectrum density 0.4G ² /Hz, r.m.s value of total acceleration 23.1G | | | |

Contact Arrangements



Remark: The above layout is view from plug mate side end face.

How To Order

Series	R06	-2	2	1	-C	1	-9	PI	0	-JC	30	9	10
Contact Row: 2—Two Rows													
Shell Plating: 2—Nickel Plating													
Contact Plating: 1—Gold Plating													
Tail Termination Type : C—Crimp													
Mounting Style: 1—Free Mounted 2—Vertical Mounted 3—Horizontal Mounted 4—Crimp Siamese 5—Nut Mounted 6—Flange Mounted 7—Floating Mounted													
Contact Number: 9,15,21,25,31,37,51,65,69pins													
Contact Type PI—Pin in Plug RH—Socket in Receptacle													
Tail Cover : 0—Without Tail Cover 1—With Tail Cover (For Free Mounted C1 Series,Vertical Mounted C2 Series and Horizontal Mounted C3 Series Only)													
Locking Hardware Type: 00—No Locking Hardware JC—Locking Screw (Straight Slot) JC1—Locking Screw (Hex, Not Recommend) TH—Connect Nut NH—Guide Hole With Nut Mounted													
Wire Gage: 30—AWG30													
Wire Color: 9—White T—Ten Color Repeating													
Wire Length: 10—Wire Length in cm. "10" Specifies 10cm													

Choose mating connector

- When choosing mating connector with locking accessories usually choose the locking component which one side with connect nut(TH), the other side with locking screw(JC).
- When choosing product with guide accessories,connector without locked component but only with guide component,it need fix on mounting panel after mated,for avoiding connector take off. When choosing mating connector with guide components usually choose the guide component which one side with guide pin, the other side with guide hole.

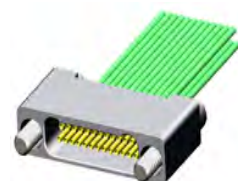
Free Mounted Crimp Series

How To Order

Series	R06	-2	2	1	-C	1	-25	PI	0	-JC	30	9	10
Contact Row:													
2—Two Rows													
Shell Plating:													
2—Nickel Plating													
Contact Plating:													
1—Gold Plating													
Tail Termination Type:													
C—Crimp													
Mounting Style:													
1—Free Mounted													
Contact Number:													
9,15,21,25,31,37,51,65,69pins													
Contact Type:													
PI—Pin in Plug RH—Socket in Receptacle													
Tail Cover:													
0—Without Tail Cover													
Locking Hardware Type:													
JC—Locking Screw (Straight Slot, "C" Dimension is 1.5mm)													
JC1— Locking Screw (Hex, Not Recommend , "C" Dimension is 2.1mm)													
Wire Gage:													
30—AWG30													
Wire Color:													
9—White T—Ten Color Repeating													
Wire Length:													
10—Wire Length in cm. "10" Specifies 10cm													



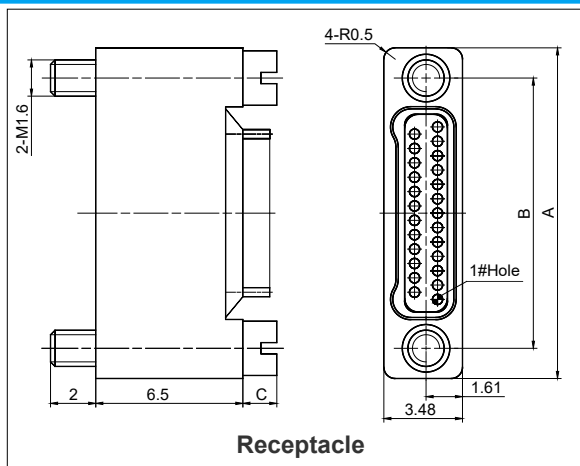
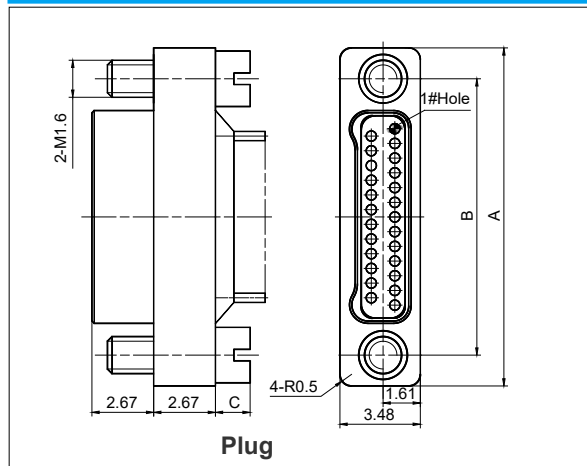
Plug



Receptacle

- Remark: 1. Locking screws are fixed on the outer shell, can't be disassembled
2. Connectors are free mounted, not fixed, usually mated with connectors with nuts.
3. Recommend JC Screws (straight slot screw), tightened by miniature straight screwdriver.
4. When choosing JC1 Screws (hex screw), tightened by 1.27mm subtense hex screwdriver.

Outline Dimensions



Pin Count	Dimensions		Pin Count	Dimensions		Pin Count	Dimensions	
	A	B		A	B		A	B
9pins	9.63	6.86	15pins	11.53	8.76	21pins	13.44	10.67
25pins	14.71	11.94	31pins	16.61	13.84	37pins	18.52	15.75
51pins	22.96	20.19	65pins	27.41	24.64	69pins	28.68	25.91

Remark: All dimensions are in mm.