

2JL30

2.4 GHz ISM Surface Mount

Key Features

2.4 GHz ISM

- 2410-2490 MHz

Surface Mount

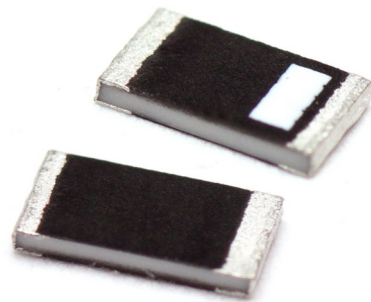
Easy to Integrate

Compact Size

Ceramic Material

Ground Plane Dependent

Dimensions 3.2 x 1.6 x 0.5 mm



1. Antenna and electrical specifications

Parameters	2.4 GHz ISM Antenna
Standards	WiFi, BT, ZigBee, ISM,
Band (MHz)	2400
Frequency (MHz)	2410-2490
Return Loss (dB)	~-21.5
VSWR	~1.3:1
Efficiency (%)	~63.3
Peak Gain (dBi)	~1.1
Average Gain (dB)	~-2.0
Impedance (Ohm)	50
Polarisation	Linear
Radiation Pattern	Omni-Directional
Max. Input Power (W)	25

Antenna Measurement Conditions:

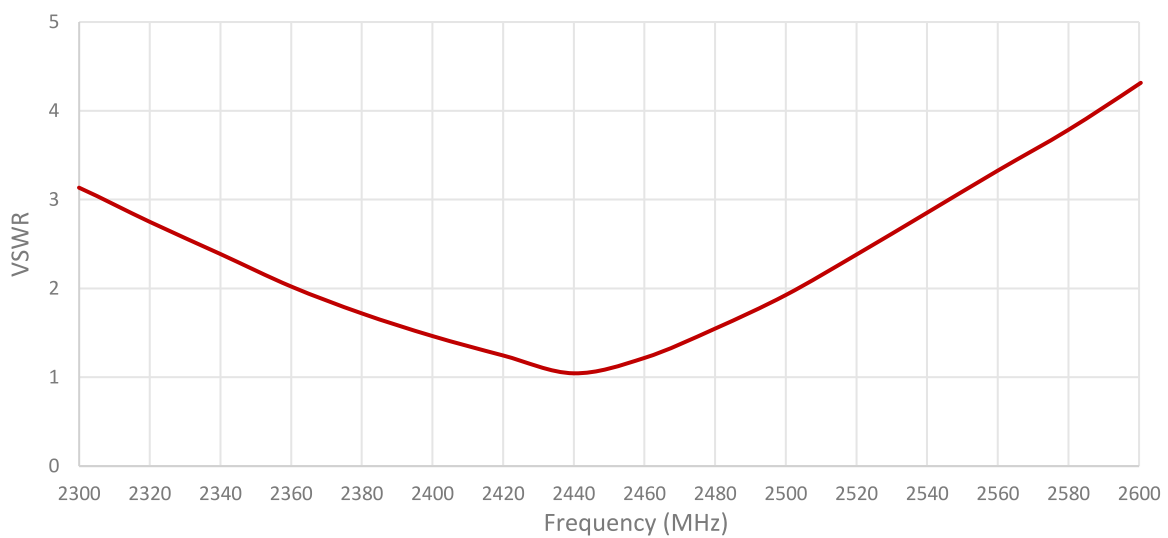
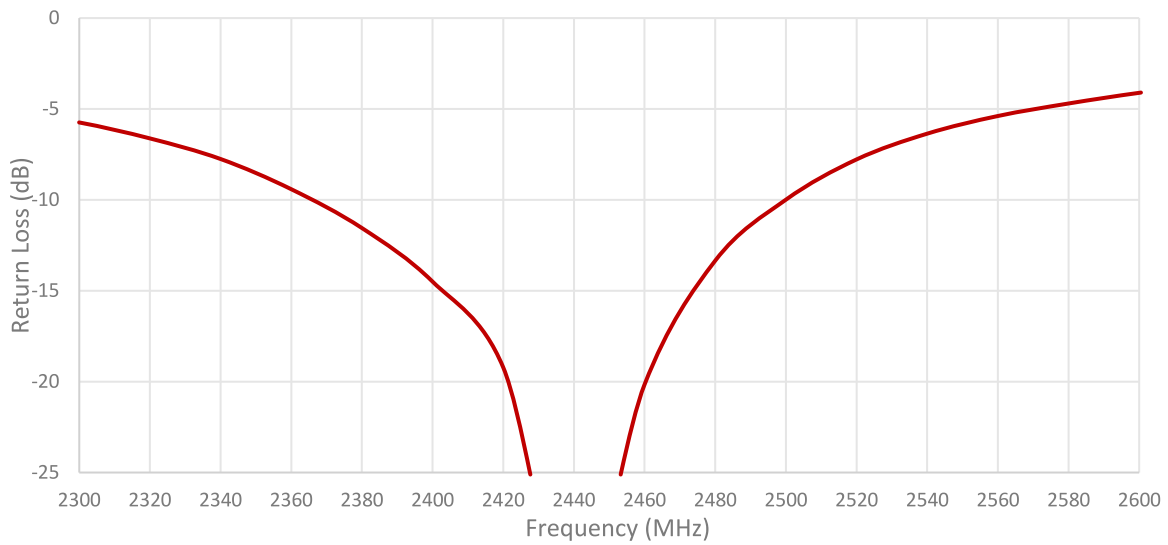
Mounted on ground plane of 80 x 40 mm

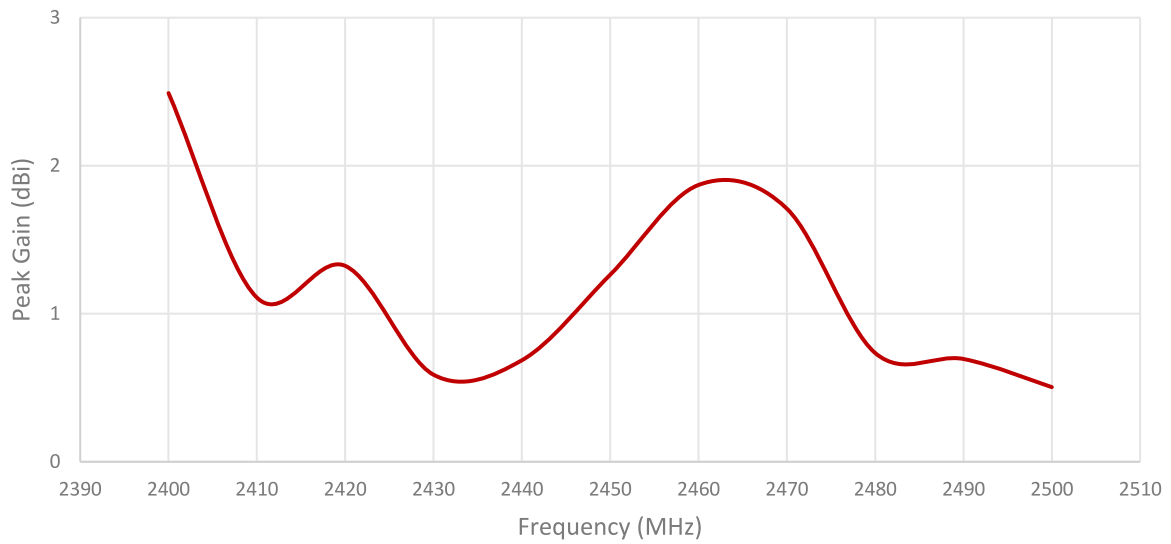
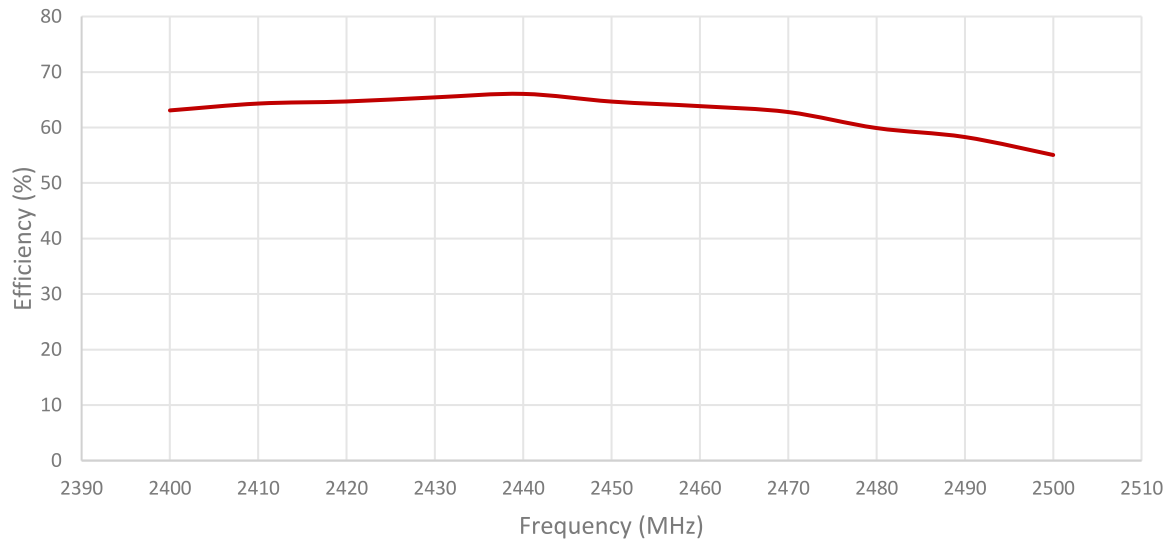
Measured in Certified CTIA 3D Anechoic Chamber

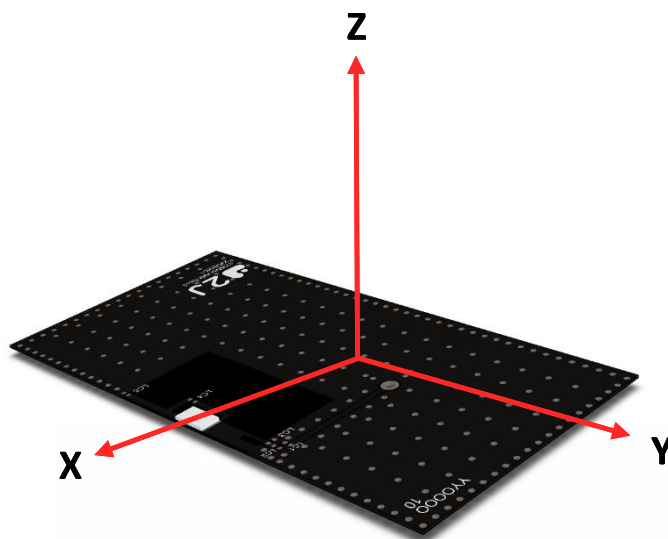
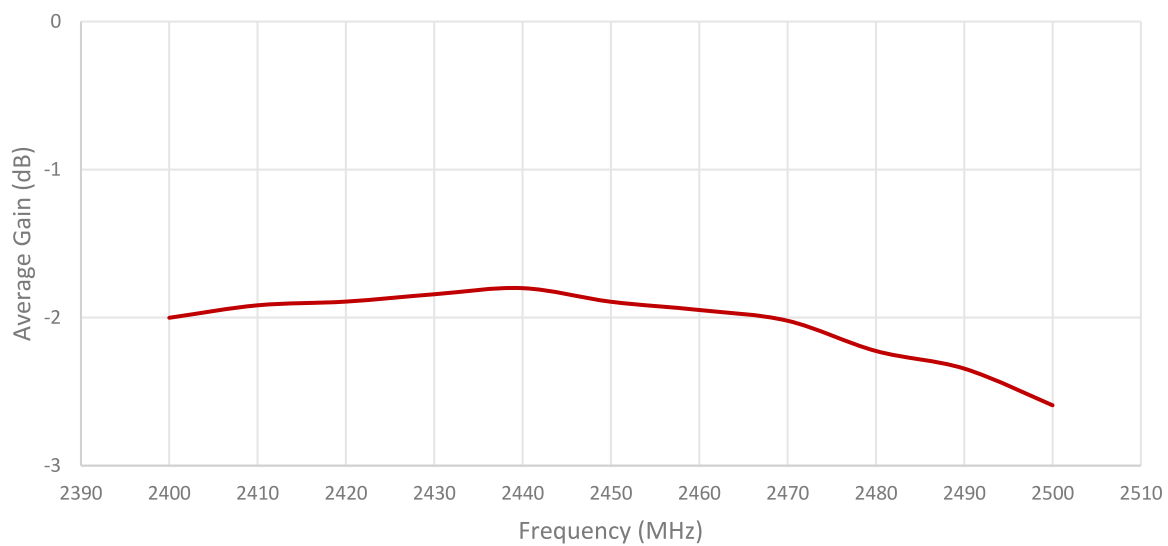
2. Mechanical and environmental specifications

Specifications	2JL30
Mounting Type	Surface Mount
Dimensions (mm)	3.2 x 1.6 x 0.5
Material	Ceramic
Operating Temperature (C)	-40 to +85
Storage Temperature (C)	-40 to +85
Substance Compliance	RoHS

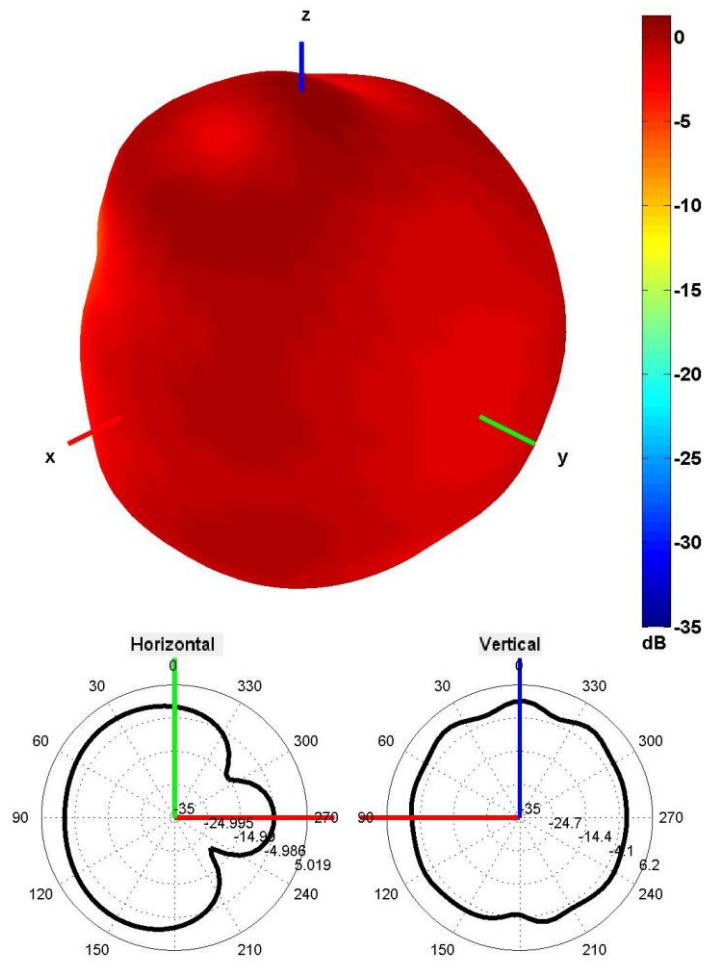
3. Antenna parameters





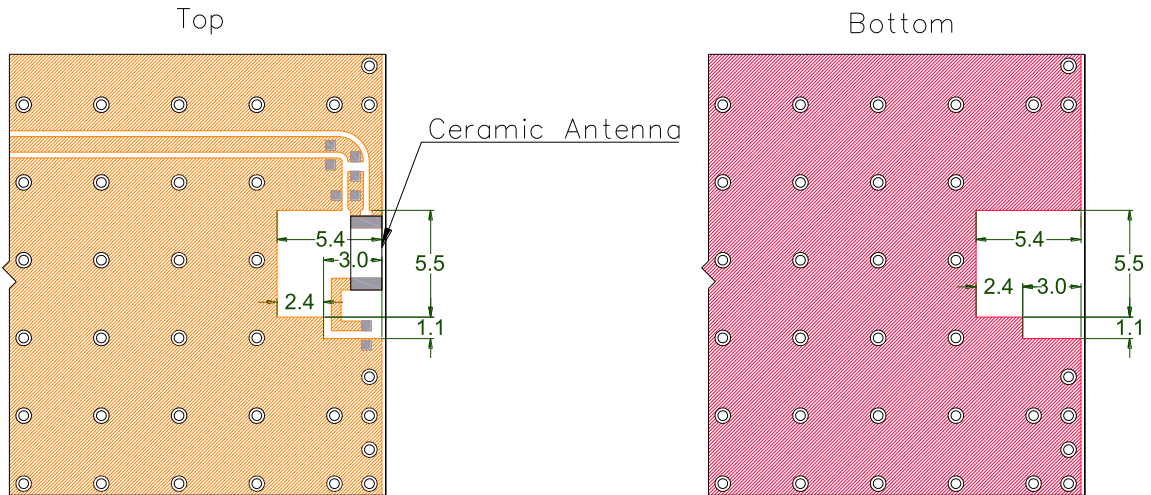


Radiation pattern reference



2450 MHz Radiation pattern

4. PCB Layout



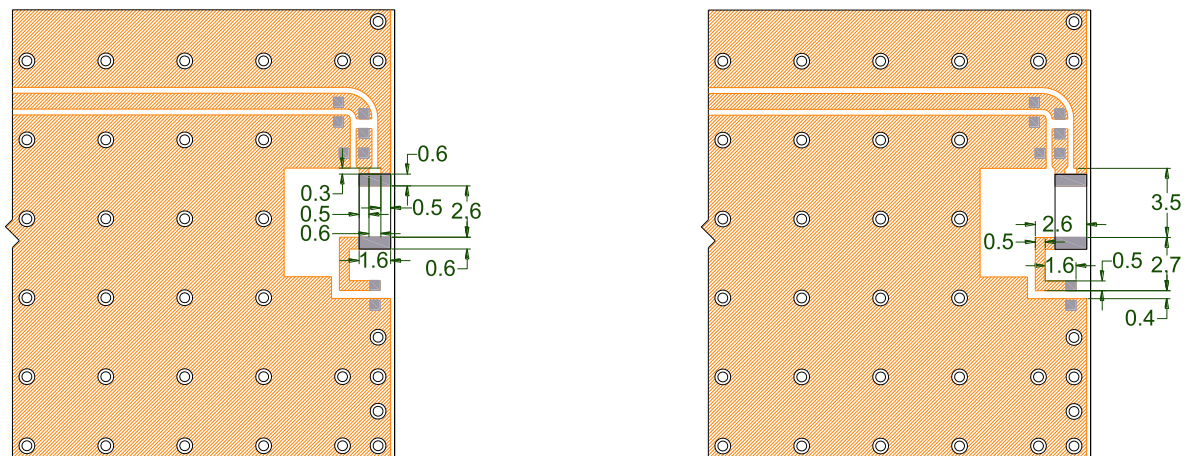
■ Solder Region

■ Top Copper Region

■ Bottom Copper Region

□ Copper-Free Region

Minimum area required for antenna integration (10mm × 10mm)



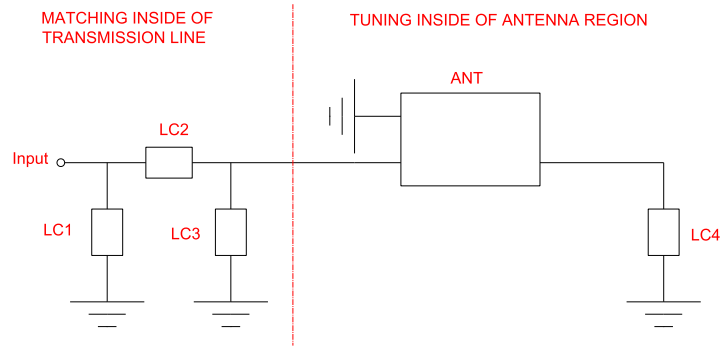
■ Solder Region

■ Top Copper Region

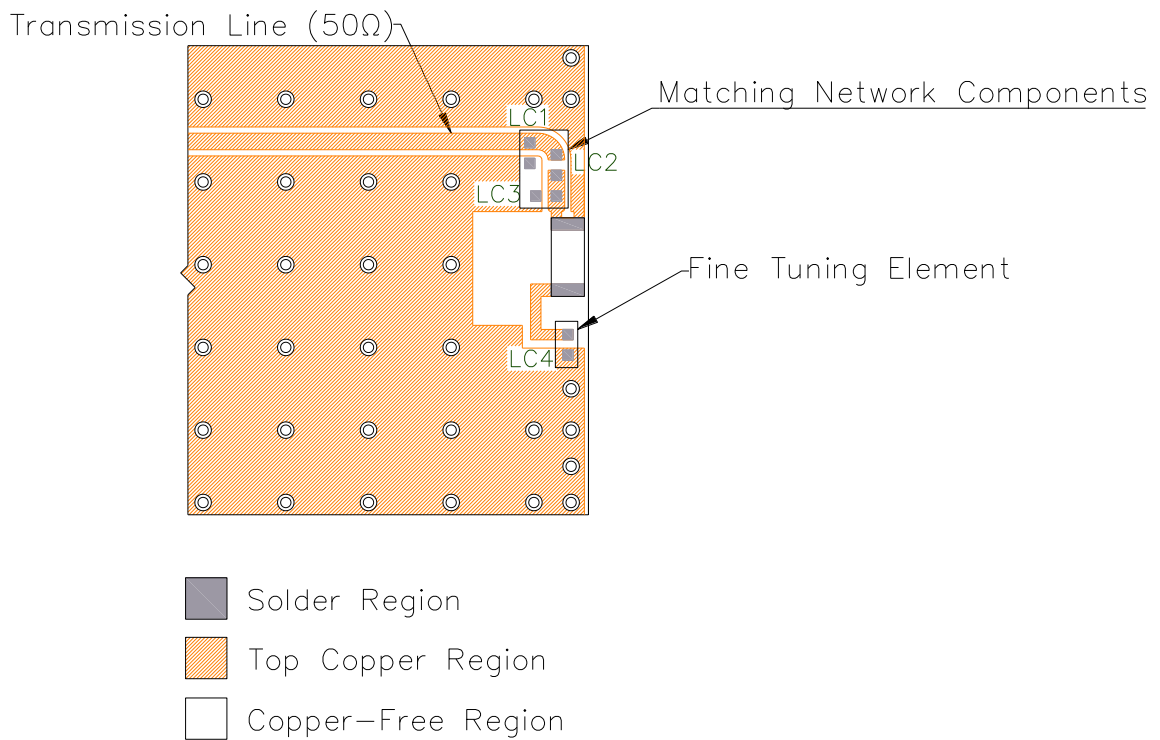
□ Copper-Free Region

Layout dimensions for antenna integration (mm)

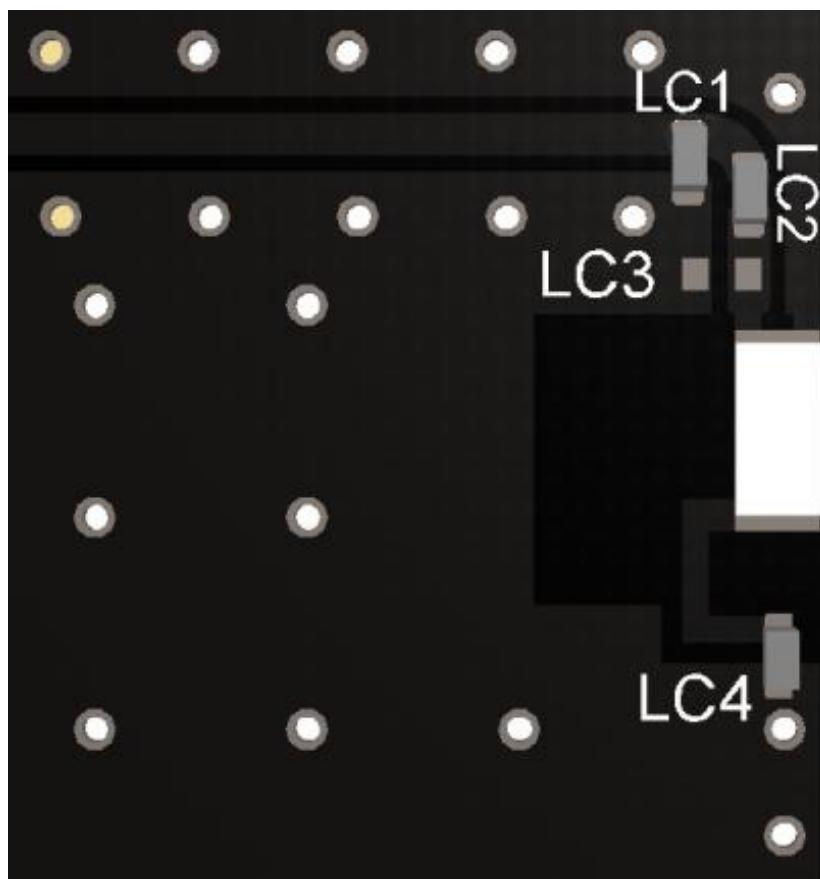
5. Matching Components



Matching Network Schematic



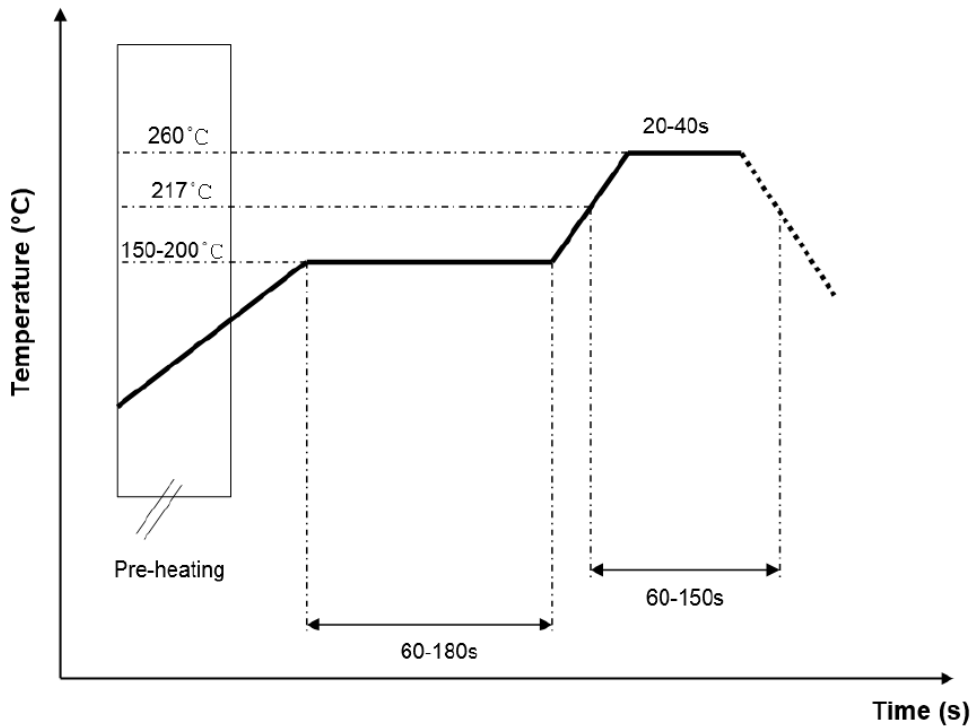
Matching network drawing (LC1=0.2pF±0.05pF, LC2=5.6nH±0.1nH, LC3=OPEN, LC4=0.8pF±0.05pF)



3D View of matching components and recommended values

Matching network drawing (LC1=0.2pF±0.05pF, LC2=5.6nH±0.1nH, LC3=OPEN, LC4=0.8pF±0.05pF)

REFLOW TEMPERATURE PROFILE



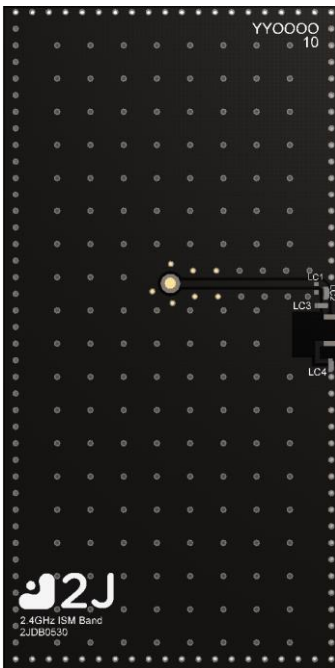
6. Evaluation Board

80mm x 40mm

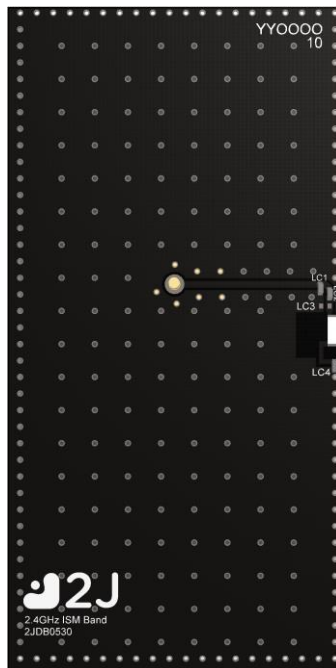
80mm x 40mm

80mm x 40mm

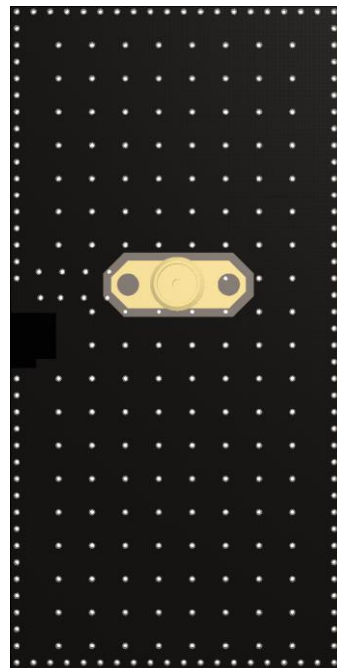
80mm x 10.8mm
(PCB: 0.8mm, Antenna: 0.5mm,
Connector: 9.5mm)



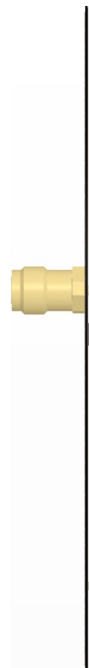
Front View without Antenna



Front View with Antenna



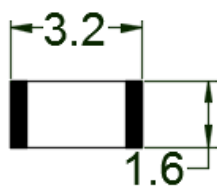
Back View



Side View

7. Antenna drawings

Bottom



Top



Feed Point

Front

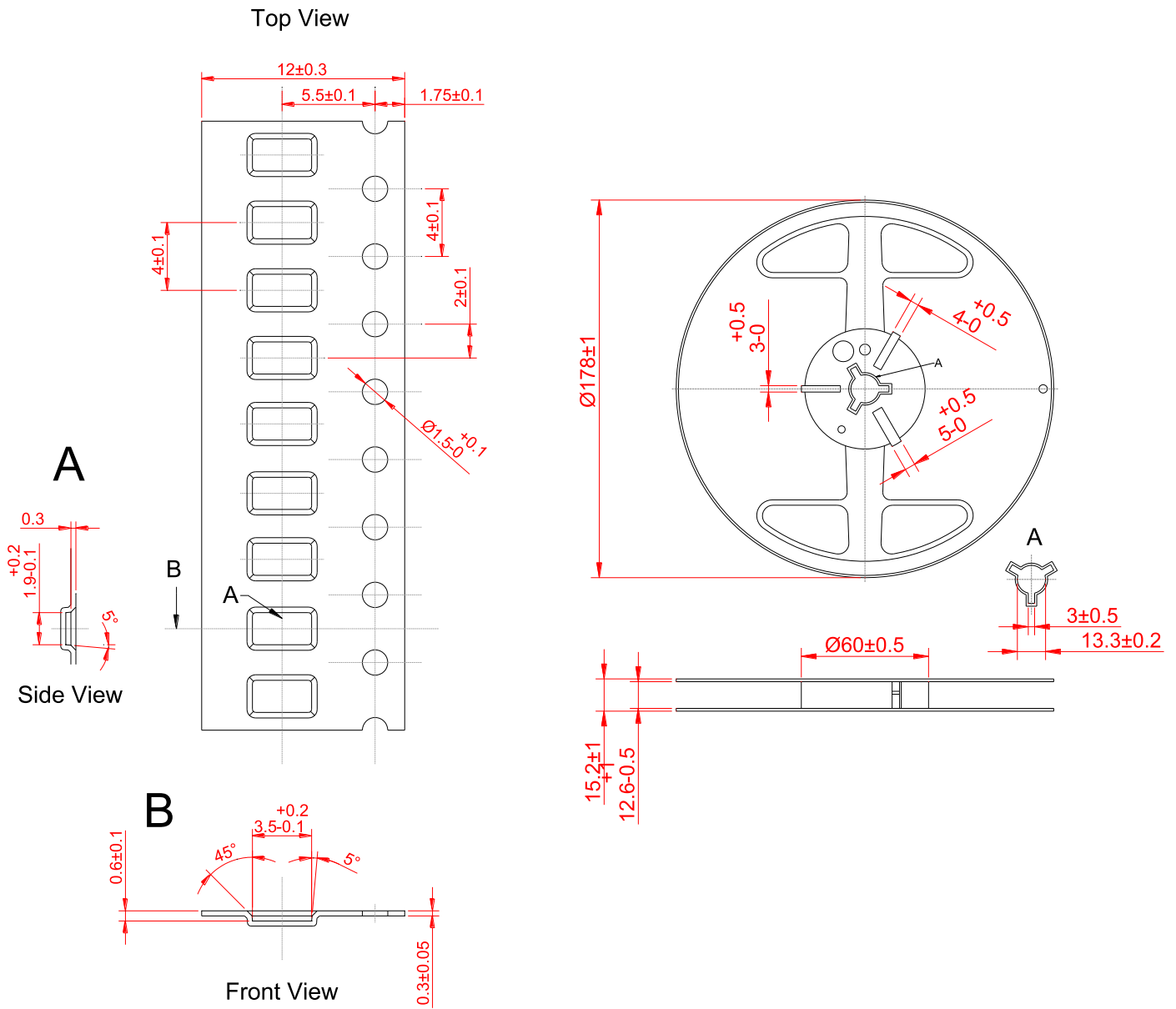


Right



Dimensions for ceramic antenna 3.2 x 1.6 x 0.5 mm

8. Tape and Reel Information



Tape and Reel Specifications

9. Packaging

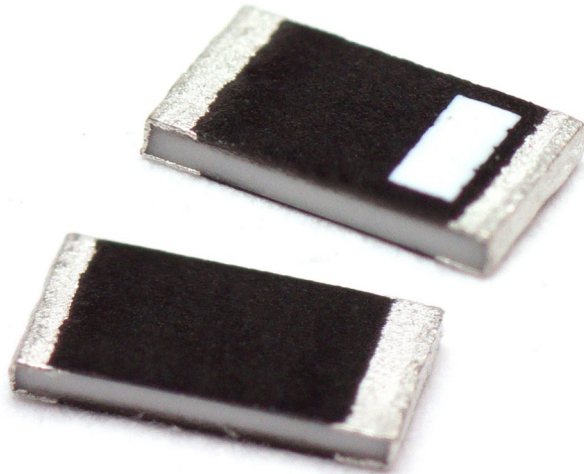
PACKAGING SPECIFICATION

Antenna	2JL30
REEL	
Max Quantity per Reel	6000
REEL BOX	
Reels per Box	2
Max Quantity per Box	12000
Reel Box Dimensions (cm)	18 x 18 x 3.6
Reel Box Weight (Kg)	0.7
CARTON	
Reels per Carton	2
Max Quantity per Carton	120000
Reel Carton Dimensions (cm)	40.5 x 24.7 x 22.5
Reel Carton Weight (Kg)	7

Storage Conditions:

- Storage Temperature Range: -40 °C to +85 °C
- Oxidizable material. Store for 12 months in vacuum sealed bag.
- Repack material after use by re-sealing package.

10. Antenna Images





Макро Групп – это:

- дистрибьютор электронных компонентов с 1994 года
- контрактный производитель электроники с 2007 года с собственным производством в Санкт-Петербурге (компания Макро EMC, входит в ГК Макро Групп)
- поставщик полупроводниковых материалов
- комплексный поставщик электронных компонентов
- моделирование и производство полупроводниковых эпитаксиальных гетероструктур для задач оптоэлектроники

Головной офис расположен в Санкт-Петербурге. Собственные представительства в крупных промышленных городах России и стран СНГ.

Преимущества для наших заказчиков:

- работа по тендерам с 2012 года
- оформление банковских гарантий
- отсрочки платежей
- поставка электронных компонентов по проектным ценам
- инженерная поддержка проектов заказчиков
- сертификат системы менеджмента качества ISO 9001-2015
- необходимые сертификаты и лицензии

Данный файл получен с сайта www.macrogroup.ru