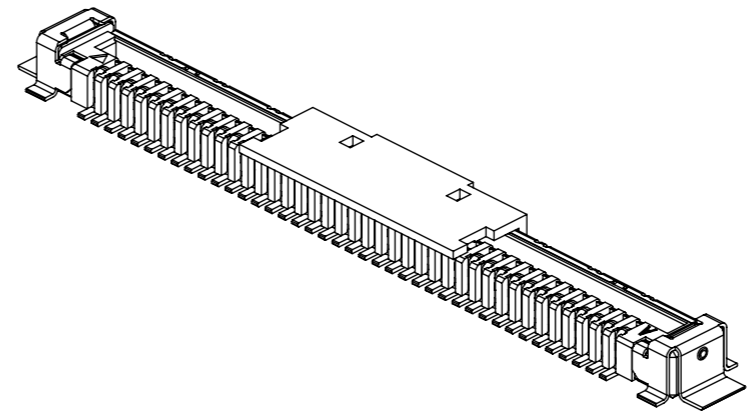
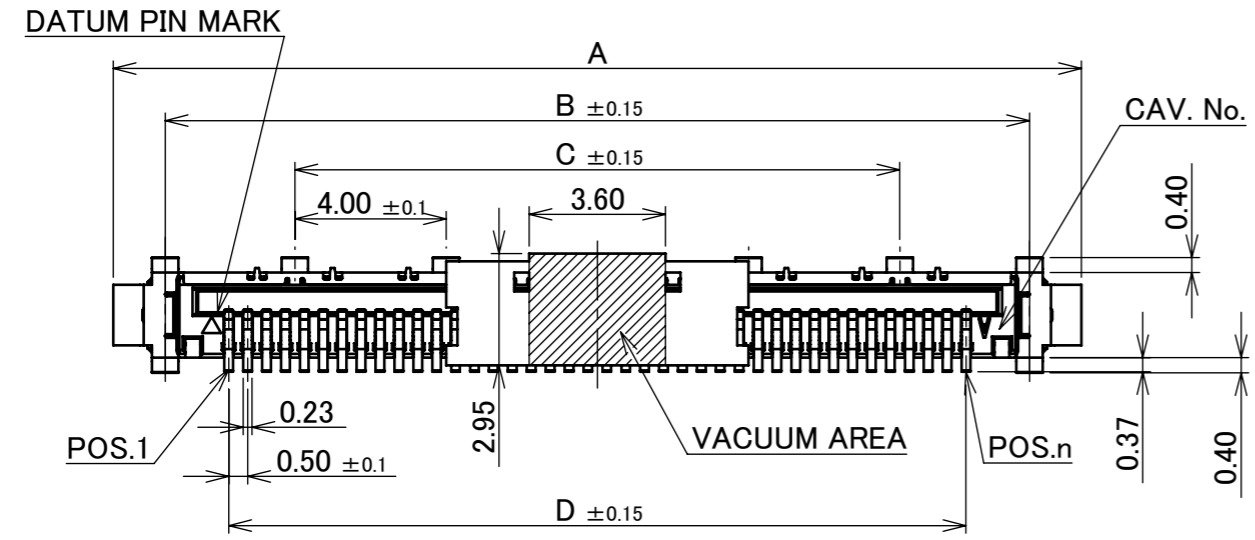


Recommended P/N 20439-0**E-01

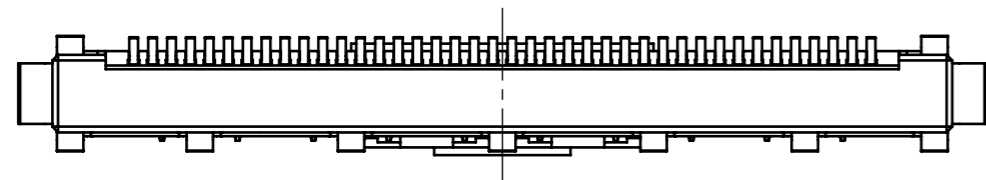
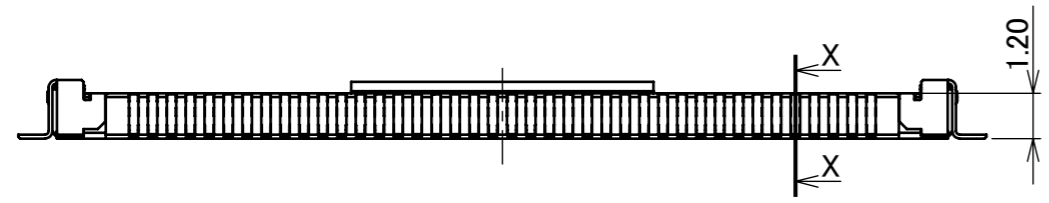
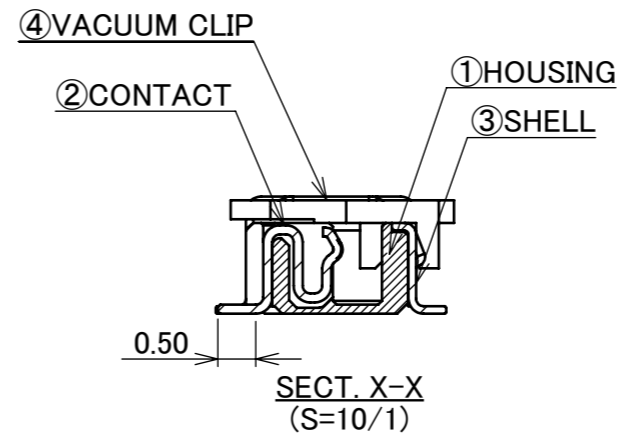
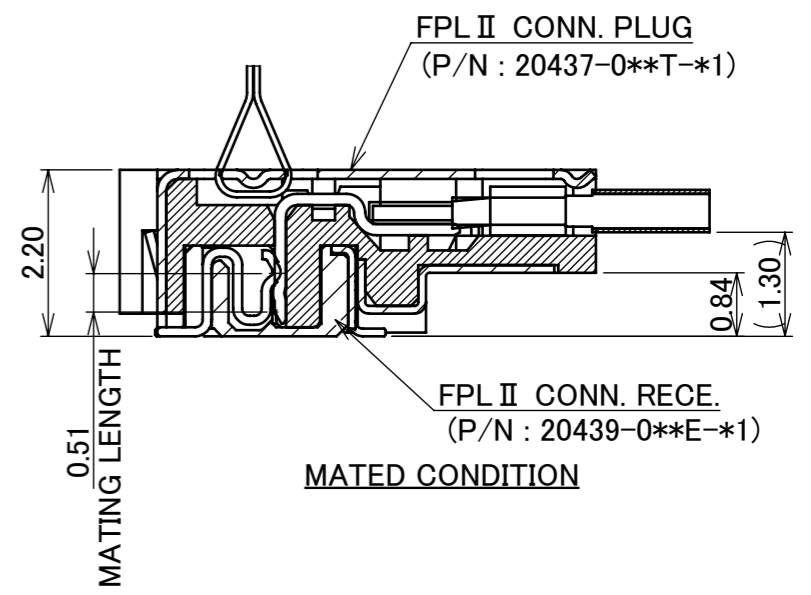
PART NO.	Pos.	A	B	C	D
20439-030E-*1	30	20.60	17.86	12.00	14.50
20439-040E-*1	40	25.60	22.86	16.00	19.50
20439-050E-*1	50	30.60	27.86	20.00	24.50

PART NO.	CONTACT FINISH (MATING SIDE)
20439-0**E-01	Au 0.1 μm MIN.
20439-0**E-11	Au 0.3 μm MIN.



MATING COMBINATION TABLE

Pos.	PLUG PART NO.	RECE. PART NO.
30P	20437-030T-*1	20439-030E-*1
40P	20437-040T-*1	20439-040E-*1
50P	20437-050T-*1	20439-050E-*1



4	VACUUM CLIP	LCP	UL94V-0, BEIGE
3	SHELL	PHOSPHOR BRONZE	Sn(NO POLISH) 0.50 μm MIN. OVER Ni 1.00 μm MIN.
2	CONTACT	PHOSPHOR BRONZE	<u>PART NO. 20439-0**E-0*</u> MATING AREA : Au 0.10 μm MIN. OVER Ni 1.00 μm MIN. OTHER AREA : Au 0.05 μm MIN. OVER Ni 1.00 μm MIN. <u>PART NO. 20439-0**E-1*</u> MATING AREA : Au 0.30 μm MIN. OVER Ni 1.00 μm MIN. OTHER AREA : Au 0.05 μm MIN. OVER Ni 1.00 μm MIN.
1	HOUSING	LCP	UL94V-0, BLACK
NO.	DISCRIPTION	MATERIAL	FINISH , REMARKS

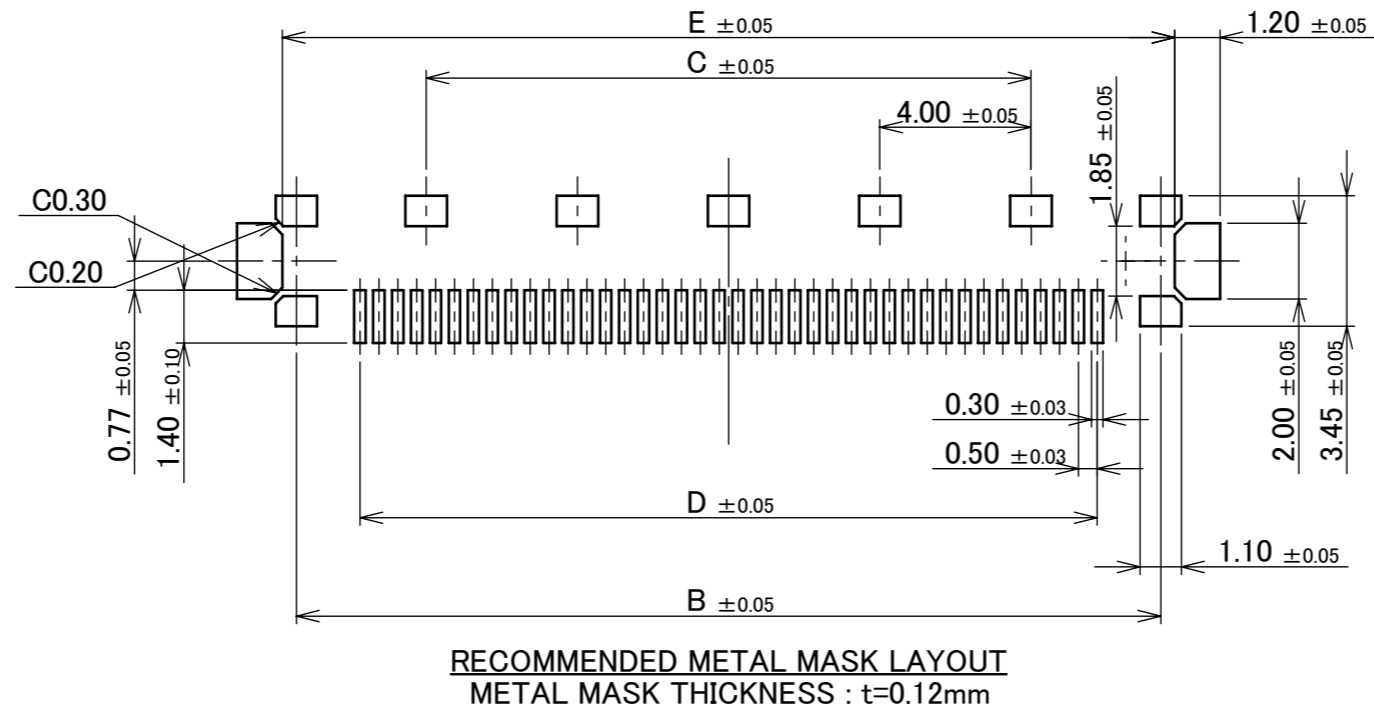
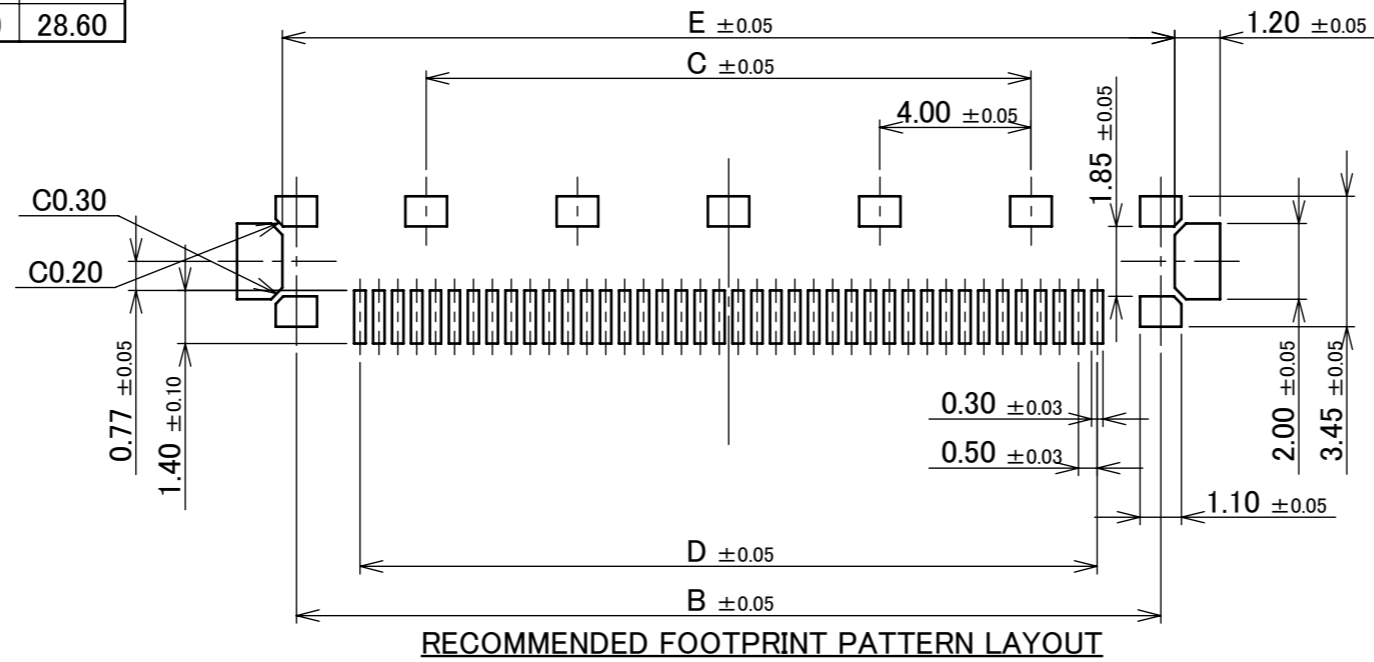
22	Z210569	T.M	June/01/'21	H.I	ANGLE	±2°	6 OVER 30 MAX.	±0.3	PROJECTION	SERIES No. R4	CUSTOMER COPY	
21	Z191305	Y.Sasa	Sept./27/'19	H.I	6 MAX.	±0.2	30 OVER 120 MAX.	±0.5				
20	Z190870	Y.Sasa	July/01/'19	H.I	GENERAL TOLERANCE.			TITLE FPL II RECE. ASS'Y	SCALE 5:1	UNIT mm	I-PEX	
19	Z181398	H.A	Oct./26/'18	Y.S	DWG.	DATE						2007/04/16
18	Z161051	K.T	Aug./26/'16	Y.S	K.Tanaka							
17	Z141444	K.T	Dec./17/'14	E.K	CHK.	Y.Hashimoto		DWG. No. 20439	SIZE A3	SHEET 1/5	REV. 22	
REV.	ECN	BY	DATE	APP.	APP.	T.Harada						
REVISION RECORD												

CAUTION VISIT OUR WEBSITE FOR LATEST VERSIONS OF INSTRUCTION MANUAL NO. HIM-09007 TO HANDLE THE PRODUCT PROPERLY AND SAFELY.

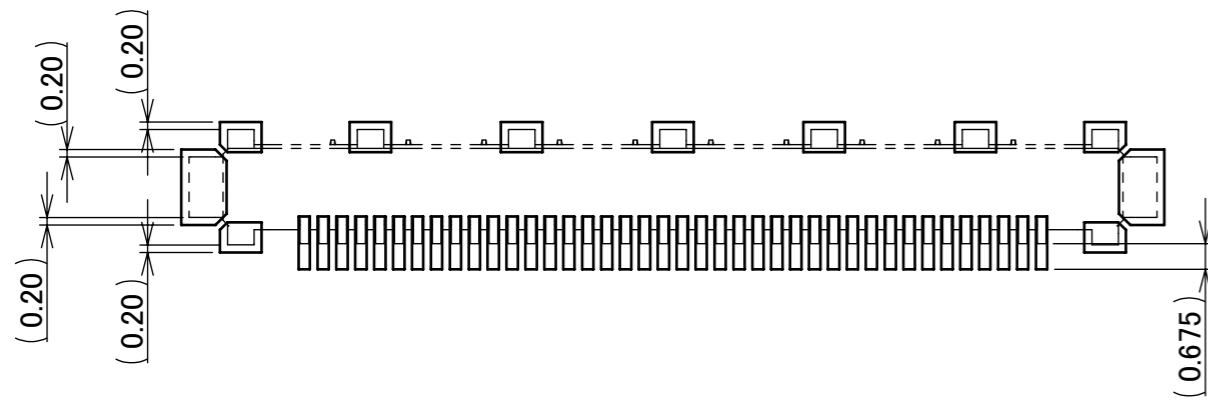
ITEMS	SPECIFICATION
APPLICABLE CABLE	MICRO COAX : AWG# 40, 38, 36, 34, 32 DISCRETE : AWG# 36, 34, 32 TWINCOAX : AWG# 40
RATING VOLTAGE	100V AC (PER CONTACT)
RATING AMPERAGE (FOR CONTACT)	0.3A AC/DC [AWG#40] PER CONTACT / UP TO 50 CONTACTS 0.6A AC/DC [AWG#38] PER CONTACT / UP TO 6 CONTACTS 0.8A AC/DC [AWG#36] PER CONTACT / UP TO 4 CONTACTS 1.0A AC/DC [AWG#34, 32] PER CONTACT / UP TO 7 CONTACTS TESTING BY REAL MACHINE IS RECOMMENDED BECAUSE TEMPERATURE RISE MAY AFFECTED BY ACTUAL SITUATION.
OPERATING TEMPERATURE	233~358K(-40°C~+85°C)
OPERATING HUMIDITY	85% MAX.(NON-CONDENSING)
CONTACT RESISTANCE	INITIAL : 145mohm MAX.(AWG#32) / AFTER TEST : \triangle 40mohm MAX. 185mohm MAX.(AWG#34) 210mohm MAX.(AWG#36) 335mohm MAX.(AWG#38) 575mohm MAX.(AWG#40)
GROUND SHELL RESISTANCE	INITIAL : 50mohm MAX. / AFTER TEST : \triangle 40mohm MAX.
INSULATION RESISTANCE	INITIAL : 1000Mohm MIN. / AFTER TEST : 500Mohm MIN.
DIELECTRIC WITHSTANDING VOLTAGE	AC250V 1min
DURABILITY	30 CYCLES
MATING FORCE (INITIAL / AFTER TEST)	30P : 50.0N MAX. 40P : 60.0N MAX. 50P : 70.0N MAX.
UNMATING FORCE (INITIAL / AFTER TEST)	30P : 5.0N MIN. 40P : 6.0N MIN. 50P : 7.0N MIN.
CABLE RETENTION FORCE	30.0N MIN.
COPLANARITY	0.10 MAX.
PRODUCT SPECIFICATION	PRS-1383
TEST REPORT	TR-07048
PACKING STANDARD	300-583
INSTRUCTION MANUAL	HIM-09007
ASSEMBLY MANUAL	ASM-07005
APPEARANCE CRITERIA No.	QLS-A***

ANGLE	$\pm 2^\circ$	6 OVER 30 MAX.	± 0.3	PROJECTION 	SERIES No. R4	CUSTOMER COPY		
6 MAX.	± 0.2	30 OVER 120 MAX.	± 0.5					
GENERAL TOLERANCE.				TITLE FPL II RECE. ASS'Y	SCALE 5:1 UNIT mm	I-PEX		
DWG.	DATE							
CHK.								
APP.								
				DWG. No.	20439	SIZE A3	SHEET 2/5	REV. 22

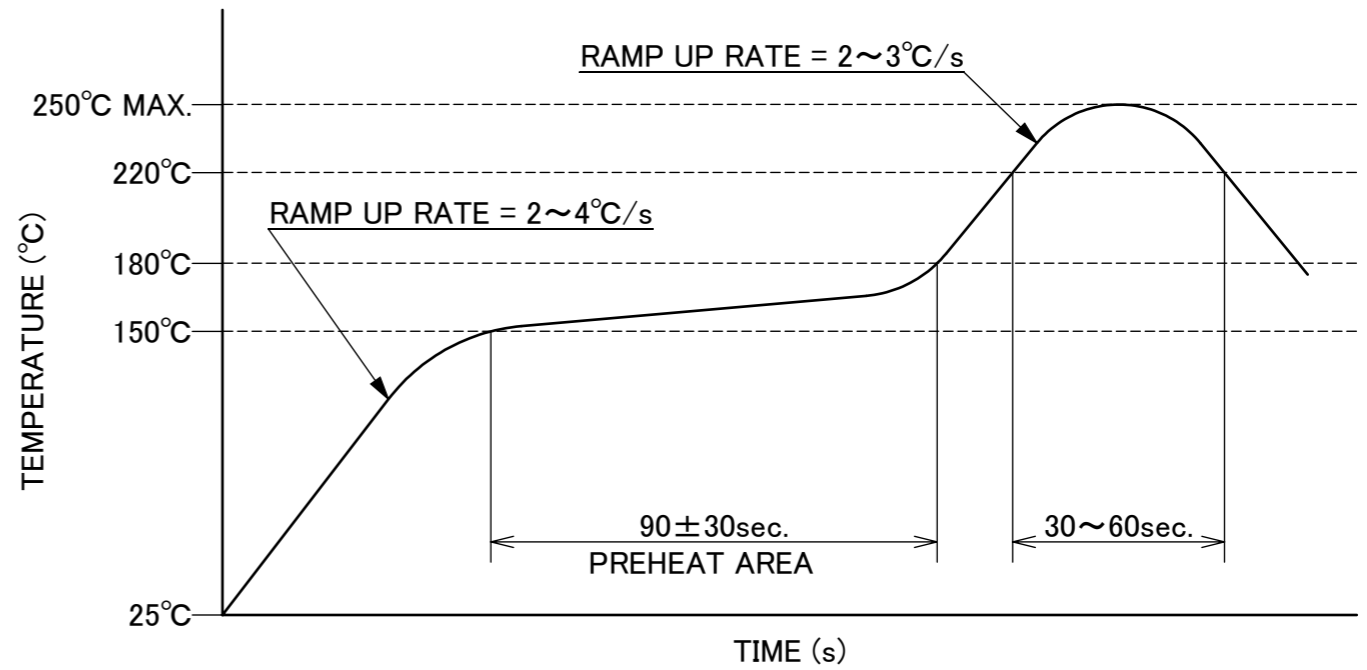
PART NO.	Pos.	B	C	D	E
20439-030E-*1	30	17.86	12.00	14.50	18.60
20439-040E-*1	40	22.86	16.00	19.50	23.60
20439-050E-*1	50	27.86	20.00	24.50	28.60



ANGLE	±2°	6 OVER 30 MAX.	±0.3	PROJECTION ⊕	SERIES No. R4	CUSTOMER COPY			
	6 MAX.	±0.2	30 OVER 120 MAX.					±0.5	
GENERAL TOLERANCE.				TITLE FPL II RECE. ASS'Y	DWG. No. 20439	SCALE	I-PEX		
DWG.	DATE		5:1						
CHK.			UNIT			mm			
APP.			SIZE			A3			
						SHEET	3/5	REV.	22



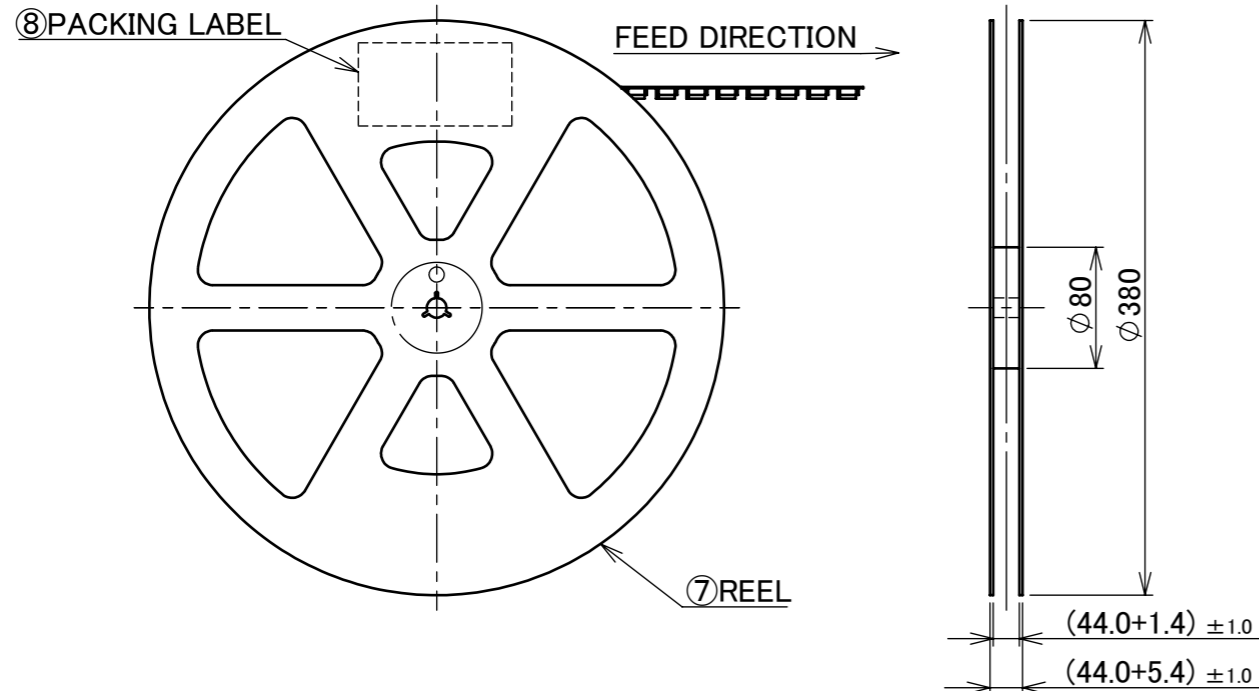
CONNECTOR ON RECOMMENDED FOOTPRINT PATTERN



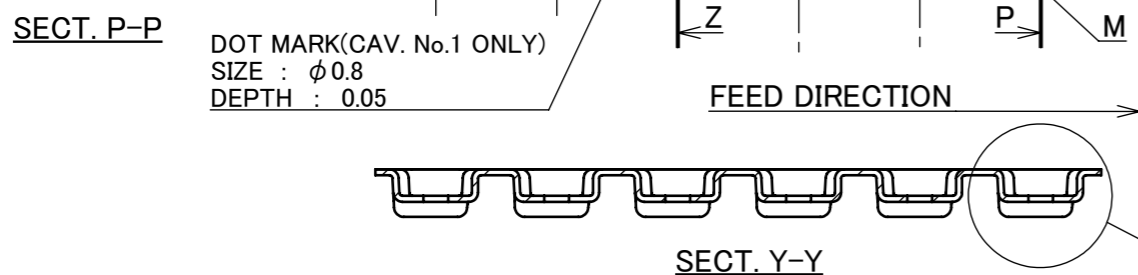
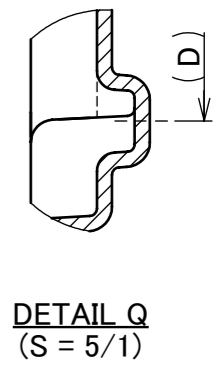
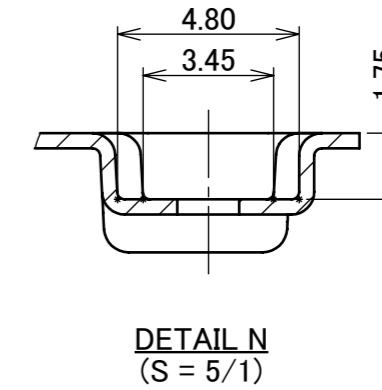
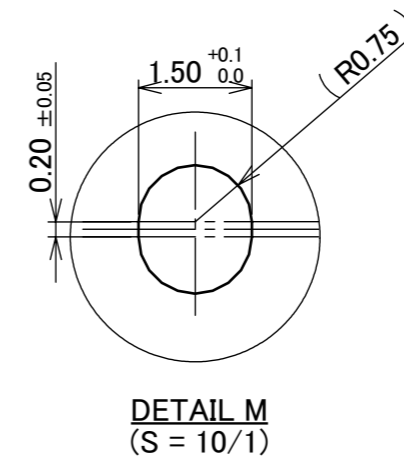
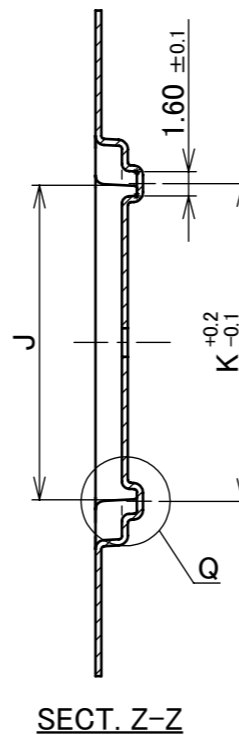
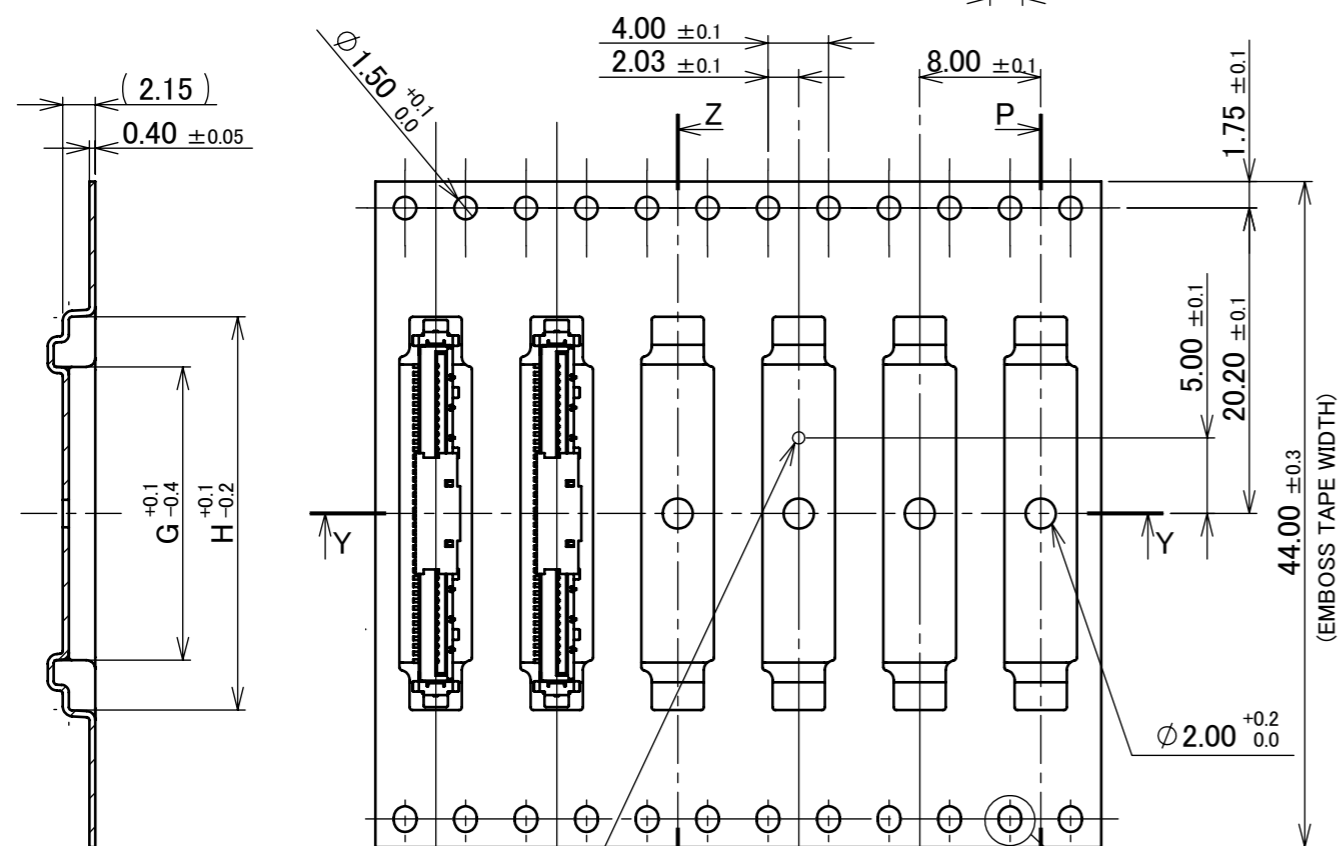
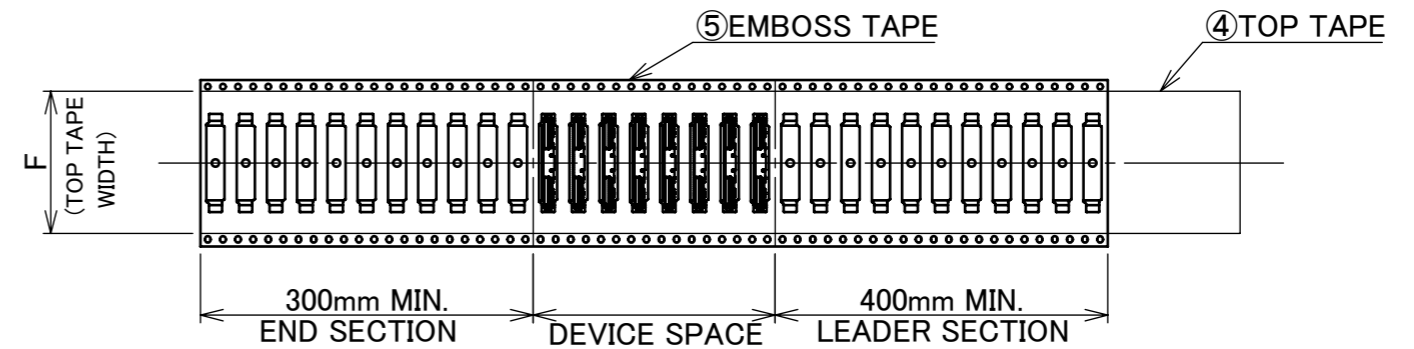
REFLOW TEMPERATURE PROFILE
 SENJU METAL INDUSTRY CO., LTD. : M705-SHF(Sn96.5 Ag3.0 Cu0.5)

ANGLE	±2°	6 OVER 30 MAX.	±0.3	PROJECTION 	SERIES No. R4	CUSTOMER COPY		
6 MAX.	±0.2	30 OVER 120 MAX.	±0.5					
GENERAL TOLERANCE.				TITLE FPL II RECE. ASS'Y	SCALE 5:1	UNIT I-PEX		
DWG.	DATE							
CHK.								
APP.								
				DWG. No.	20439	SIZE A3	SHEET 4/5	REV. 22

PART NO.	Pos.	F	G	H	J	K	QTY. PER EMBOSS REEL (PIECES / REEL)	QTY. PER PACKING CARTON (REELS / CARTON)
20439-030E-*1	30	32.3	14.40	21.00	15.70	16.00	3000 PIECES / REEL	3 REELS / CARTON (9000 PIECES / CARTON)
20439-040E-*1	40	37.4	19.40	26.00	20.70	21.00		
20439-050E-*1	50		24.40	31.00	25.70	26.00		



- NOTES.
1. TAPING SPECIFICATION FOLLOWS JIS C 0806 (IEC 60286-3).
 2. MAKE EMPTY SECTION OF LEADER AND END ON EACH END OF THE TAPE.
 3. TOP TAPE SHALL NOT STICK OUT FROM EMBOSS TAPE.
 4. TOP TAPE SHALL NOT COVER FEED HOLE.



DOT MARK(CAV. No.1 ONLY)
SIZE : $\phi 0.8$
DEPTH : 0.05

NO.	DISCRIPTION	MATERIAL	FINISH , REMARKS
8	PACKING LABEL	-	-
7	REEL	PS	ANTI-STATIC TYPE BLACK
6	TOP TAPE	PET t=0.061 TRANSPARENCY	ANTI-STATIC TYPE
5	EMBOSSED TAPE	PS t=0.4 TRANSPARENCY	ANTI-STATIC TYPE

ANGLE	$\pm 2^\circ$	6 OVER 30 MAX.	± 0.3	PROJECTION	SERIES No.	CUSTOMER COPY			
6 MAX.	± 0.2	30 OVER 120 MAX.	± 0.5		R4				
GENERAL TOLERANCE.				TITLE	FPL II RECE. ASS'Y		SCALE	I-PEX	
DWG.	DATE			2:1					
CHK.				UNIT	mm				
APP.				DWG. No.	20439	SIZE	SHEET	REV.	
						A3	5/5	22	