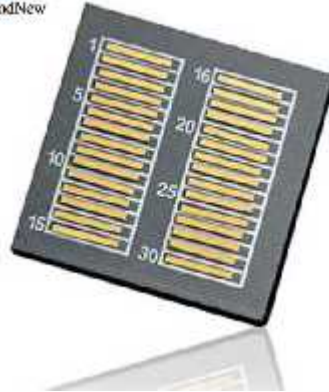


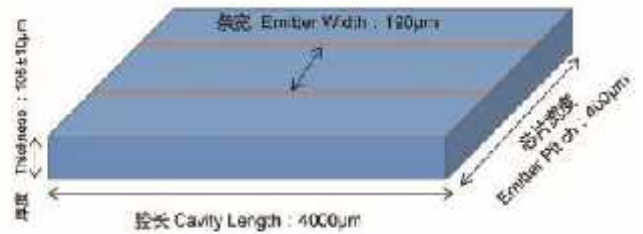
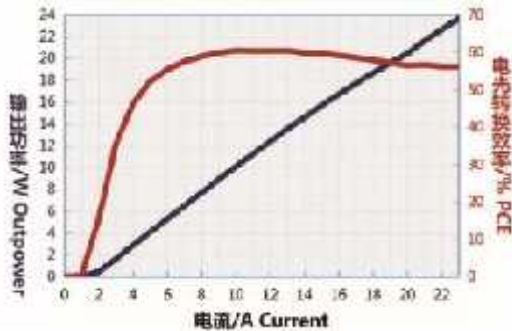
15w 888nm Single Emitter Laser Bar

Features:

High brightness, High efficiency
High Polarization
Customized Option if needed.



Data sheet:



Data Sheet

Item No.: LC888SE15

Item Name: 15w 888nm Single Emitter Laser Bar

Optical

Center Wavelength	888nm
Output Power	15W
Center Wave Deviation	3nm
Working Mode	CW

Geometrical

Emitter Width	190um
Emitter Pitch	400um
Cavity length	4000um
Thickness	105um

Electrical

Operating Current Iop	15A
Threshold Current Ith	1.5A
Operating Voltage Vop	1.8V
Slop efficiency	1.2w/A
Conversion efficiency	60%
Spectral Bandwidth	5nm

Thermal

Operating Temperature	25°C
Storage Temperature	-30~70°C