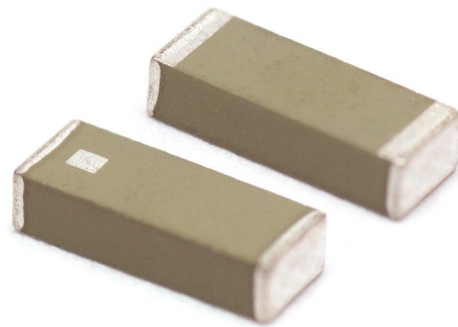


2JE07g

2.4 GHz ISM Surface Mount

Key Features

- 2.4 GHz ISM
- 2410-2490 MHz
- Surface Mount
- Easy to Integrate
- Compact Size
- Ceramic Material
- Ground Plane Dependent
- Dimensions 5.3 x 2 x 1.3 mm



1. Antenna and electrical specifications

Parameters	2.4 GHz ISM Antenna
Standards	WiFi, BT, ZigBee, ISM,
Band (MHz)	2.4 GHz
Frequency (MHz)	2410-2490
Return Loss (dB)	~-20.3
VSWR	~1.2:1
Efficiency (%)	~67
Peak Gain (dBi)	~3.2
Average Gain (dB)	~-1.8
Impedance (Ohm)	50
Polarisation	Linear
Radiation Pattern	Omni-Directional
Max. Input Power (W)	25

Antenna Measurement Conditions:

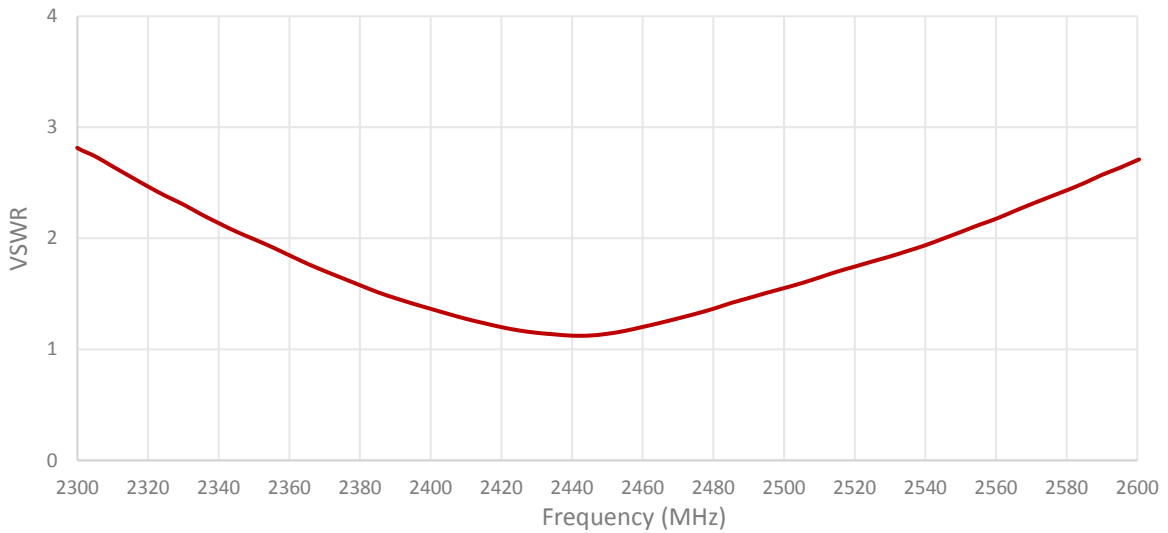
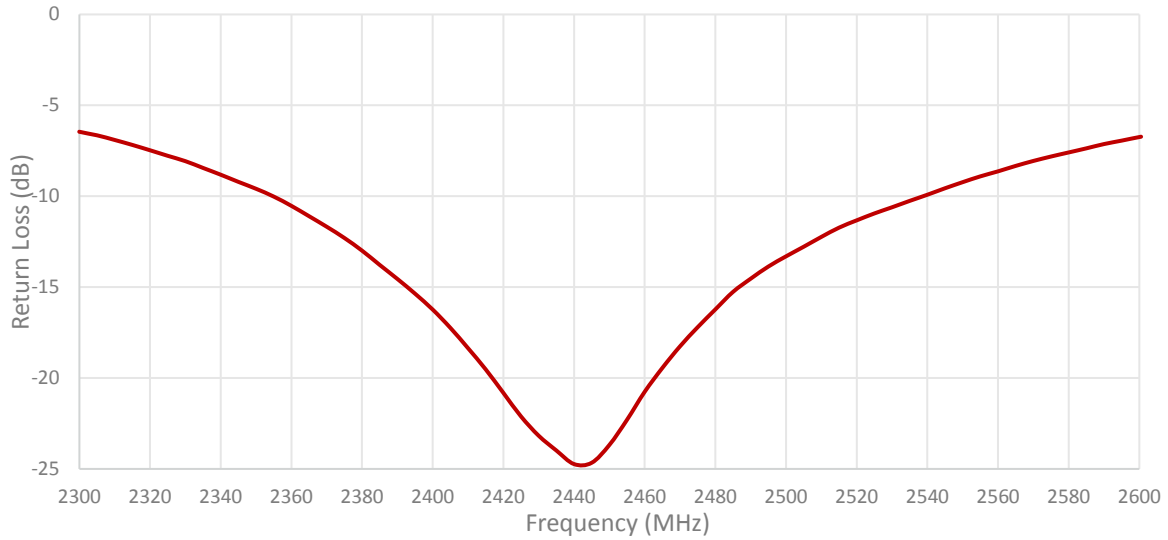
Mounted on ground plane of 50 x 90 mm

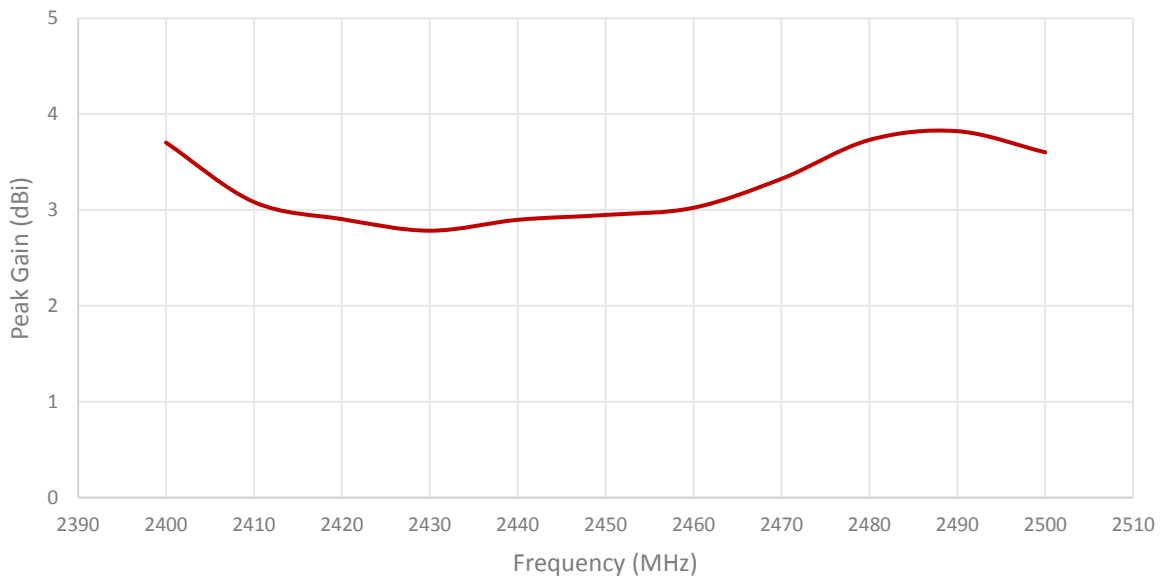
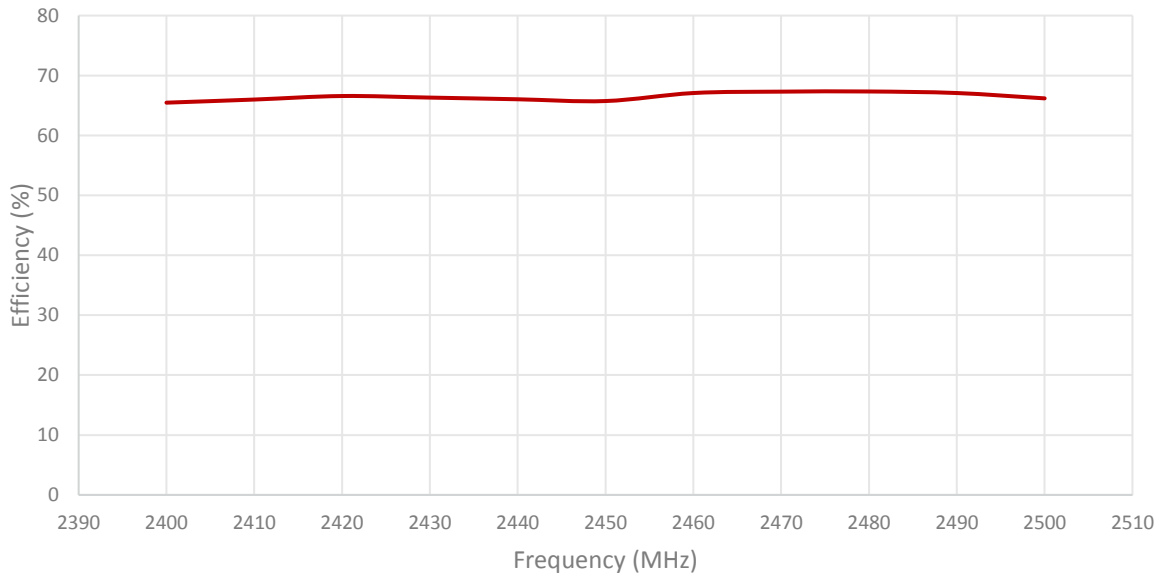
Measured in Certified CTIA 3D Anechoic Chamber

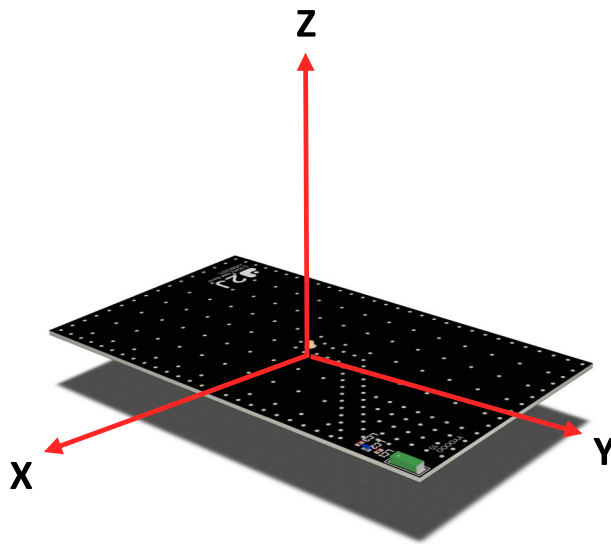
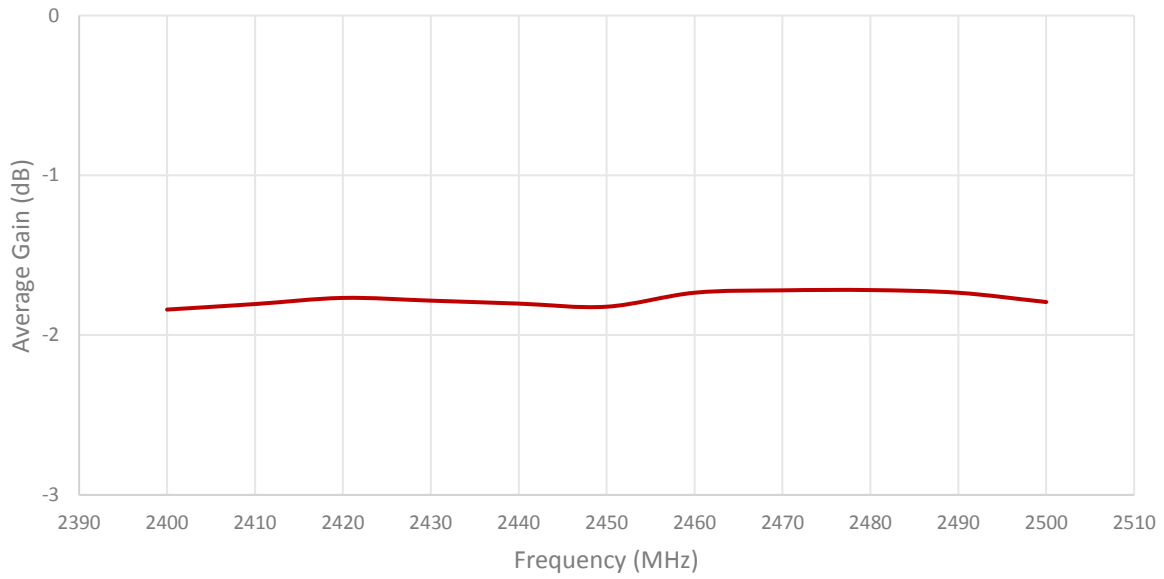
2. Mechanical and environmental specifications

Specifications	2JE07g
Mounting Type	Surface Mount
Dimensions (mm)	5.3 x 2 x 1.3
Material	Ceramic
Operating Temperature (C)	-40 to +85
Storage Temperature (C)	-40 to +85
Substance Compliance	RoHS
Typical Shear Force Test	7.5Kgf according to IEC62137-1-2:2007

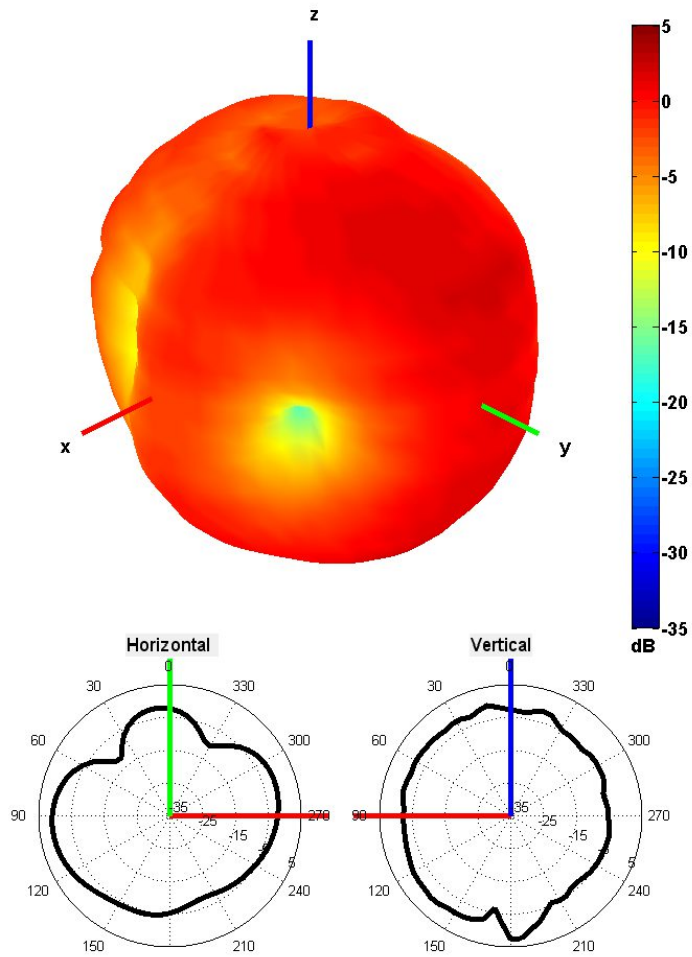
3. Antenna parameters





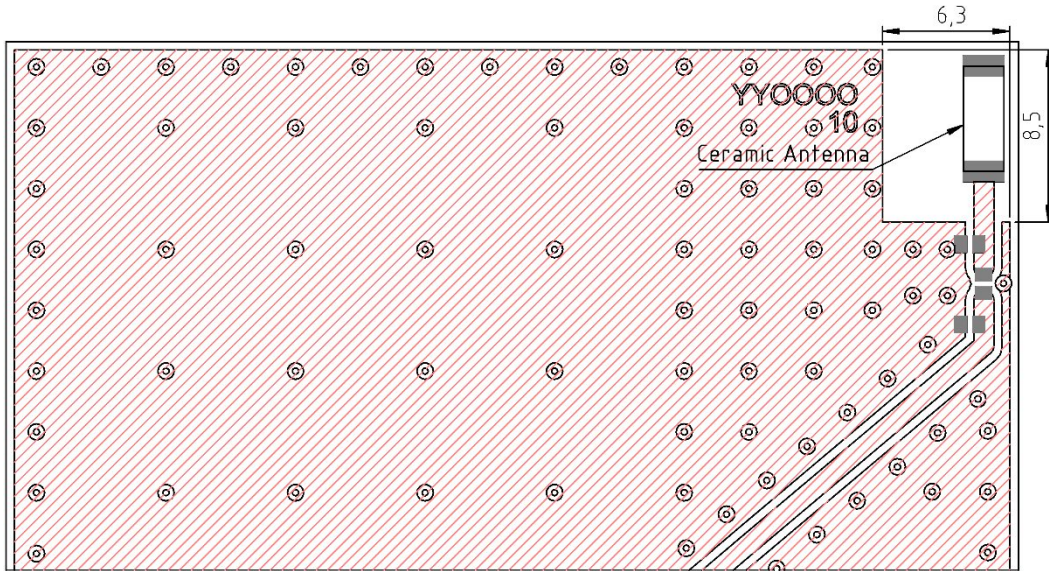


Radiation pattern reference






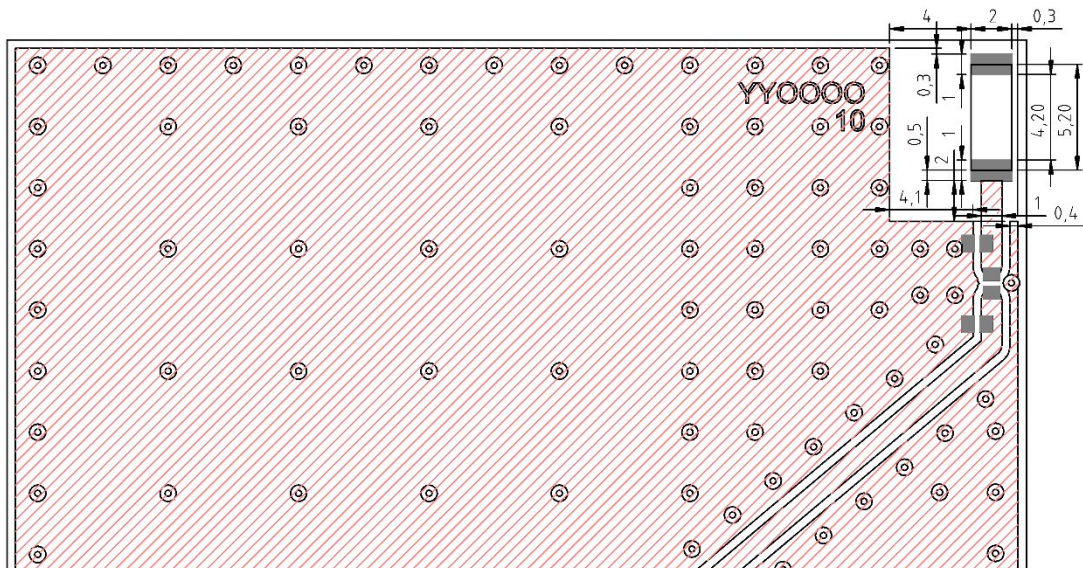
2450 MHz Radiation pattern

4. PCB Layout






Minimum area required for antenna integration (6.3mm × 8.5mm)

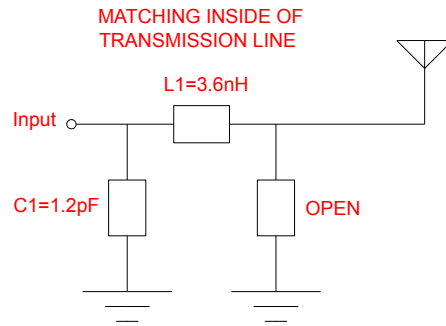
-  Solder Region
-  Copper Region
-  Copper-Free Region



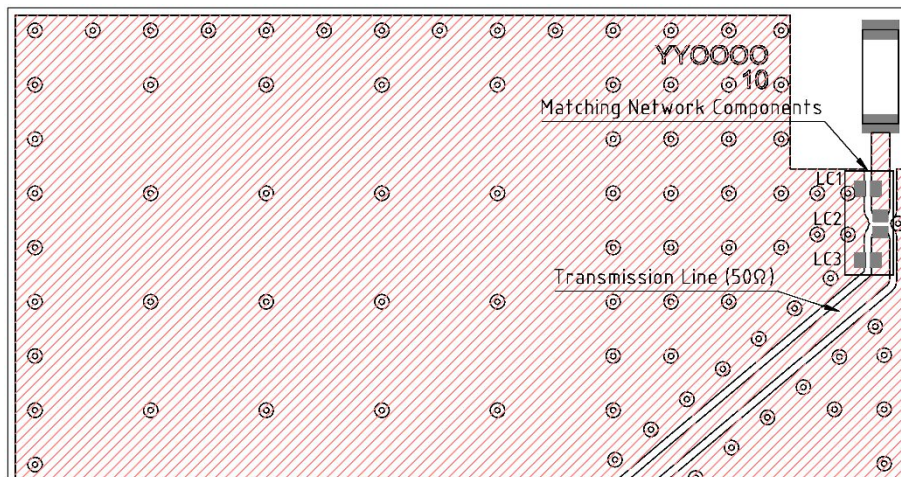
Layout dimensions for antenna integration (mm)

-  Solder Region
-  Copper Region
-  Copper-Free Region

5. Matching Components



Matching Network Schematic

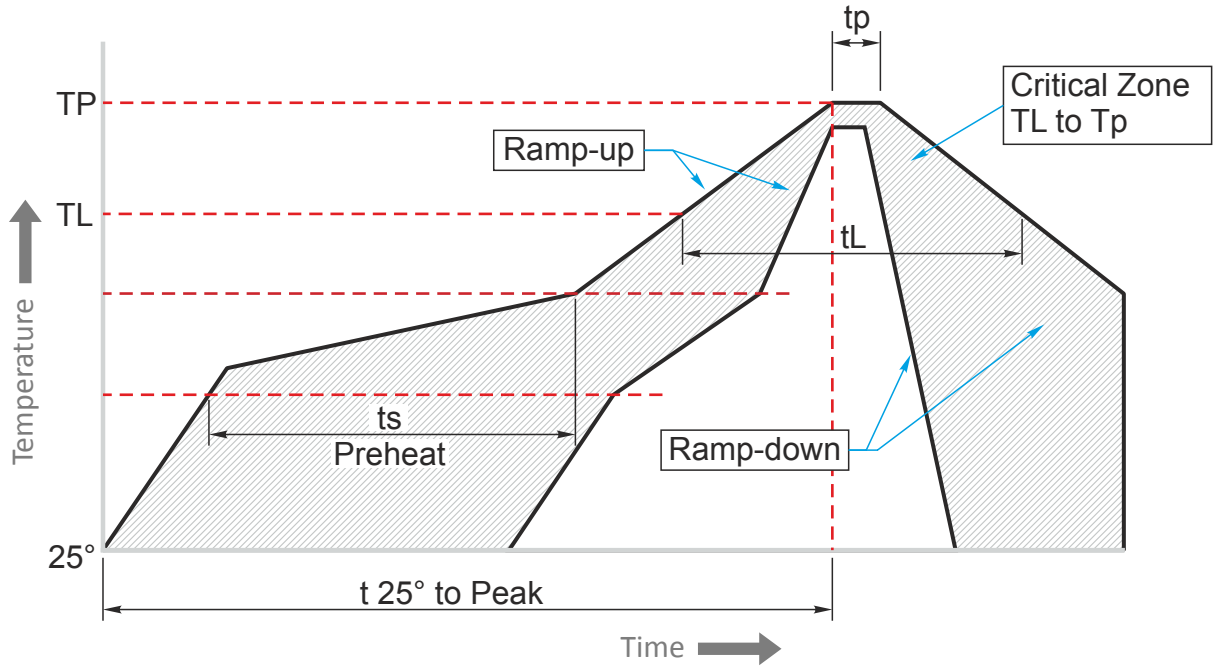


Matching network drawing (LC1=OPEN, LC2=3.6nH, LC3=1.2pF)



3D View of matching components and recommended values (LC1 = OPEN, LC2=3.6nH, LC3= 1.2pF)

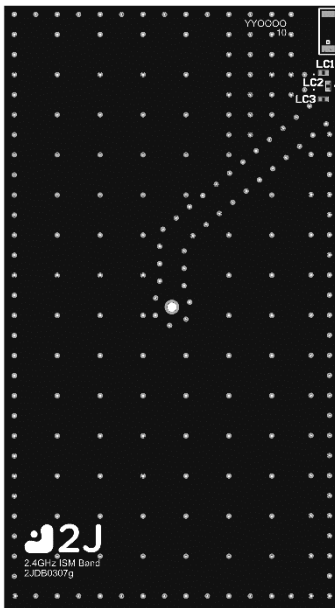
REFLOW TEMPERATURE PROFILE



Phase	Profile features	Sn-Pb Assembly	Pb-Free Assembly (SnAgCu)
RAMP-UP	Avg. Ramp-up Rate ($T_{s_{max}}$ to TP)	3°C / second (max)	3°C / second (max)
PREHEAT	-Temperature Min Rate ($T_{s_{min}}$)	100°C	150°C
	-Temperature Max Rate ($T_{s_{min}}$)	150°C	200°C
REFLOW	-Time ($t_{s_{min}}$ to $t_{s_{max}}$)	60-120 seconds	60-120 seconds
	-Temperature (T_L)	183°C	217°C
PEAK	-Total Time above T_L (t_L)	60-150 seconds	60-150 seconds
	-Temperature (T_p)	235°C	260°C
RAMP-DOWN	-Time (t_p)	10-30 seconds	20-40 seconds
	Rate	6°C / second max.	6°C / second max.
Time from 25°C to Peak Temperature		6 minutes max.	8 minutes max.

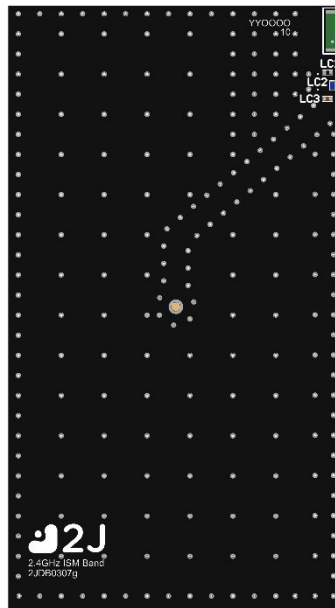
6. Evaluation Board

90mm x 50mm



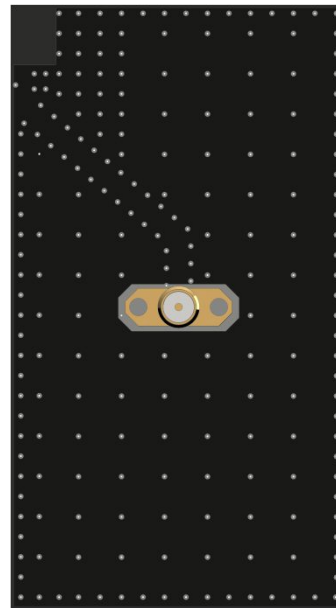
Front View without Antenna

90mm x 50mm



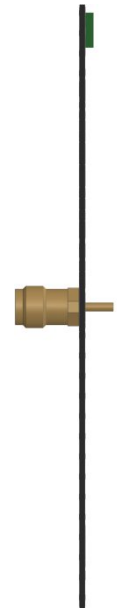
Front View with Antenna

90mm x 50mm



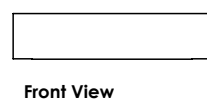
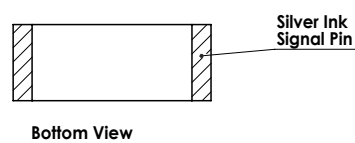
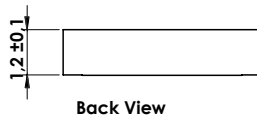
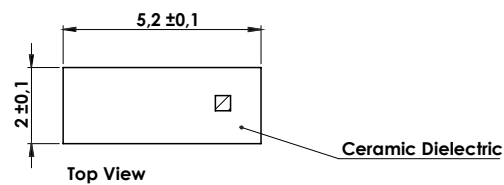
Back View

90mm x 11.5mm
(PCB: 0.8mm, Antenna: 1.2mm,
Connector: 9.5mm)



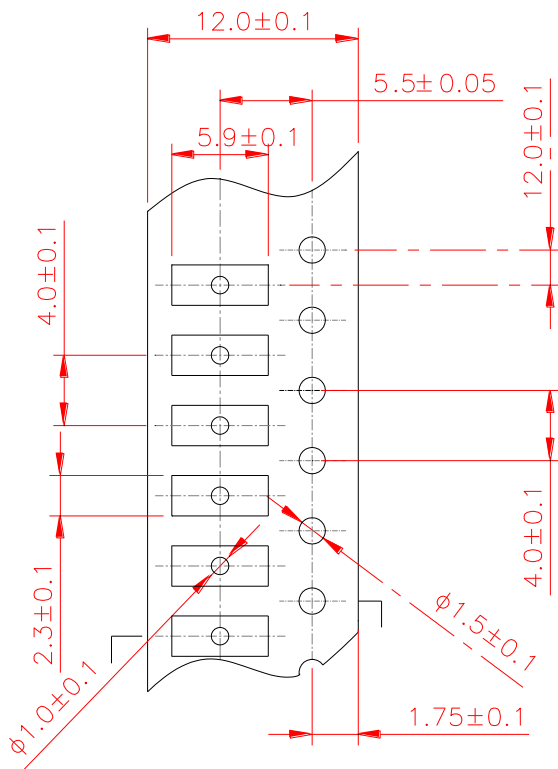
Side View

7. Antenna drawings

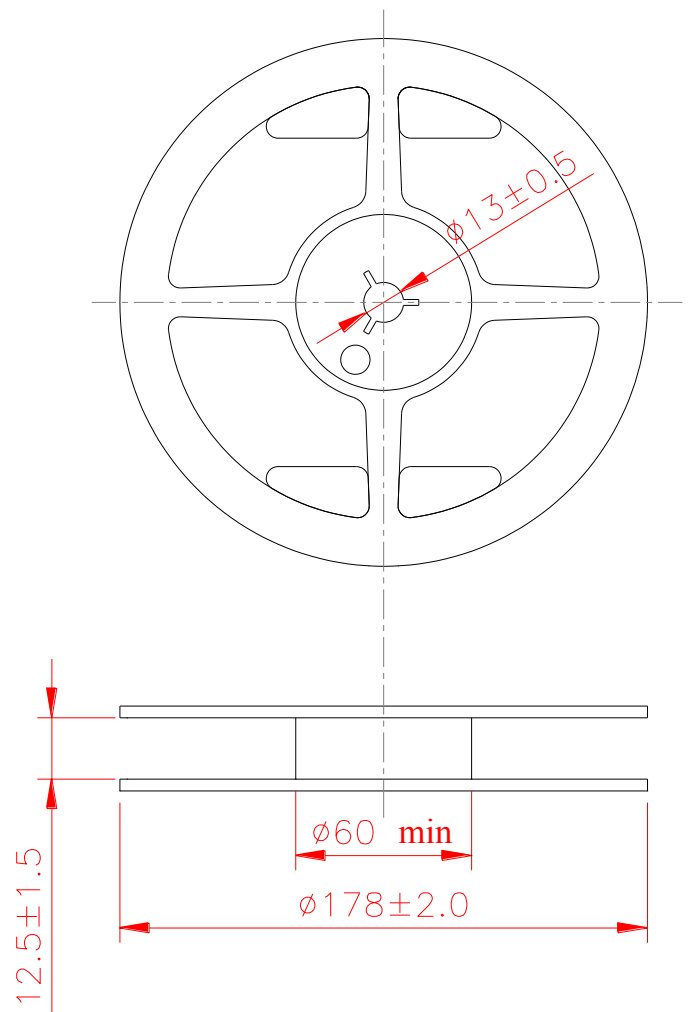
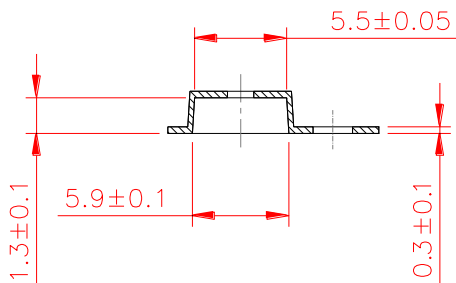


8. Tape and Reel Information

Top View



Front View



Tape and Reel Specifications

9. Packaging

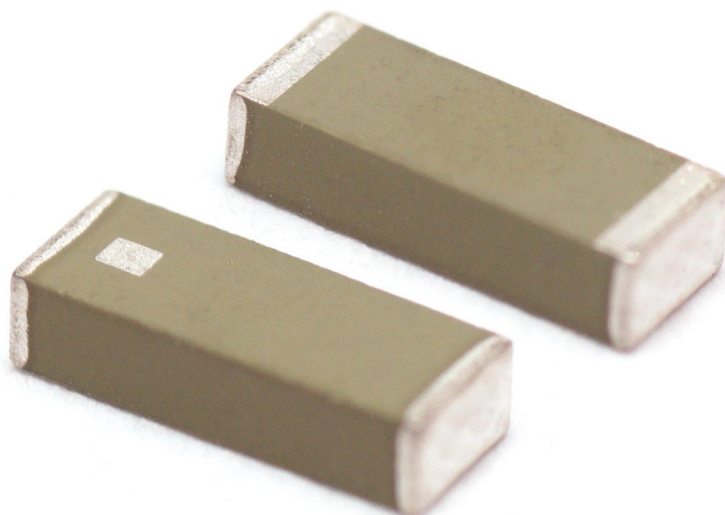
PACKAGING SPECIFICATION

Antenna	2JE07g
REEL	
Max Quantity per Reel	3000
REEL BOX	
Reels per Box	1
Reel Box Dimensions (cm)	18.5 x 18.5 x 3
Reel Box Weight (Kg)	0.27
CARTON	
Reels per Carton	10
Max Quantity per Carton	30,000
Reel Carton Dimensions (cm)	33 x 21 x 21
Reel Carton Weight (Kg)	3.1

Storage Conditions:

- Storage Temperature Range: -40 °C to +85 °C
- Oxidizable material. Store for 12 months in vacuum sealed bag.
- Repack material after use by re-sealing package.

10. Antenna Images





Макро Групп – это:

- дистрибьютор электронных компонентов с 1994 года
- контрактный производитель электроники с 2007 года с собственным производством в Санкт-Петербурге (компания Макро EMC, входит в ГК Макро Групп)
- поставщик полупроводниковых материалов
- комплексный поставщик электронных компонентов
- моделирование и производство полупроводниковых эпитаксиальных гетероструктур для задач оптоэлектроники

Головной офис расположен в Санкт-Петербурге. Собственные представительства в крупных промышленных городах России и стран СНГ.

Преимущества для наших заказчиков:

- работа по тендерам с 2012 года
- оформление банковских гарантий
- отсрочки платежей
- поставка электронных компонентов по проектным ценам
- инженерная поддержка проектов заказчиков
- сертификат системы менеджмента качества ISO 9001-2015
- необходимые сертификаты и лицензии

Данный файл получен с сайта www.macrogroup.ru