

60W 1064nm Single Bar Laser Chip

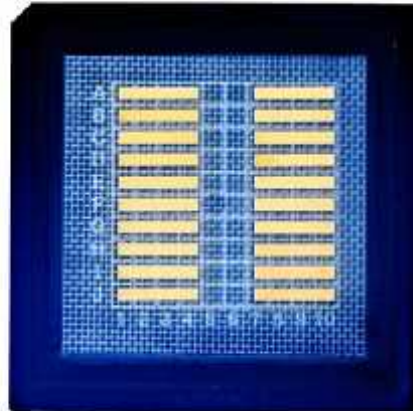
60W 1064nm Laser Bar Chip with multi emitter, CW working mode. Multi emitter diode lasers have great advantages in high reliability and high performance. In multi emitter diode lasers, these compact packages and commercially approved formats allow easy integration into existing products.

Feature

High output power 60W, CW/QCW working mode
100% power modulation, 10mm bar length
Optimized epitaxial structure design
Unique technology for highest reliability and lifetime

Application

Fiber Laser Pumping Source
Autonomous Driving Lidar
Free space optical communication
Laser lighting



Date sheet

Item No.: LC1064SB60

Item Name: 60W 1064nm Single Bar Laser Chip

Optical	Typ
Central Wavelength	1064±10nm
Output Power	60W
Working Mode	CW/QCW
Emitter Quantity	19
Emitter Width	150um
Emitter Pitch	500um
Chip Width	500um
Cavity Length	1.5mm
Bar Length	10mm
Electrical	
Operating Current Iop	65A
Threshold Current Ith	10A
Operating Voltage Vop	2V
Thermal	
Test Temperature	25°C
Storage Temperature	0~55°C
Wavelength Temperature Coefficient	0.3nm/°C