

Shenzhen Leadtek Electronics Co.,Ltd

PRODUCT SPECIFICATION

TFT-LCD MODULE

Module No: LTK430WV15A-CT-V4

☒ Preliminary Specification

☐ Approval Specification

Designed by	Checked by	Approved by
		

Final Approval by Customer

Approved by	Comment

※The specification of "TBD" should refer to the measured value of sample . If there is difference between the design specification and measured value, we naturally shall negotiate and agree to solution with customer.

[illegible]

2.GENERAL INFORMATION

Item	Specification	Unit
LCD size	4.3	inch
Display Mode	Normally Black	--
Resolution	480(RGB)x800	Pixel
Pixel pitch	0.039(H) x 0.117(V)	mm
Pixel Arrangement	RGB Vertical Stripe	
Viewing direction	Free	-
CTP+LCM Module outline dimension	66. 26(H)*113. 90(V)*3. 0(D)	mm
LCD AA	56.16 (H)* 93.60 (V)	mm
TP VA	56. 66 (H) *94. 10 (V)	mm
Colors	16.7M	-
Driver IC	ST7701S	-
Interface	2 lines MIPI	--
Backlight	White LED	--
Touch IC	GT911	--
Surface hardness	6H	--
Support points	-	--
Touch structure	G+F+F	--
Cover lens	0. 7mm	--
Colors	black	--
Operating Temperature	-20℃~ +70℃	--
Storage Temperature	-30℃~ +80℃	--

3.ABSOLUTE MAXIMUM RATINGS

Parameter	Symbol	Min	Max	Unit	Note
Power Supply voltage 1	VCI~GND	-0.3	+4.6	V	
Power Supply voltage 2	IOVCC~GND	-0.3	+4.6	V	
Logic Input Voltage Range	V _{IN}	-0.3	IOVCC+0.3	V	
Logic Output Voltage Range	V _O	-0.3	IOVCC+0.3	V	
Operating temperature	Topr	-20	+70	°C	
Storage temperature	Tstg	-30	+80	°C	

* The absolute maximum rating values of this product are not allowed to be exceeded at any times. Should a module be used with any of the absolute maximum ratings exceeded, the characteristics of the module may not be recovered, or in an extreme case, the module may be permanently destroyed.

4.DC ELECTRICAL CHARACTERISTICS

4.1 Driving TFT LCD Panel

AGND = GND = 0V, Ta = 25°C

Parameter	Symbol	Min	Typ	Max	Unit
Supply voltage for analog circuit	VCI	2.5	2.8	3.3	V
Supply voltage for logic circuit	IOVCC	1.65	1.8	3.3	V
Input voltage 'H'level	V _{IH}	0.7*IOVCC	—	IOVCC	V
Input voltage 'L'level	V _{IL}	-0.3	—	0.3*IOVCC	V
Output voltage 'H'level	V _{OH}	0.8*IOVCCI	—	IOVCC	V
Output voltage 'L'level	V _{OL}	GND	—	0.2*IOVCC	V

4.2 Backlight Characteristics

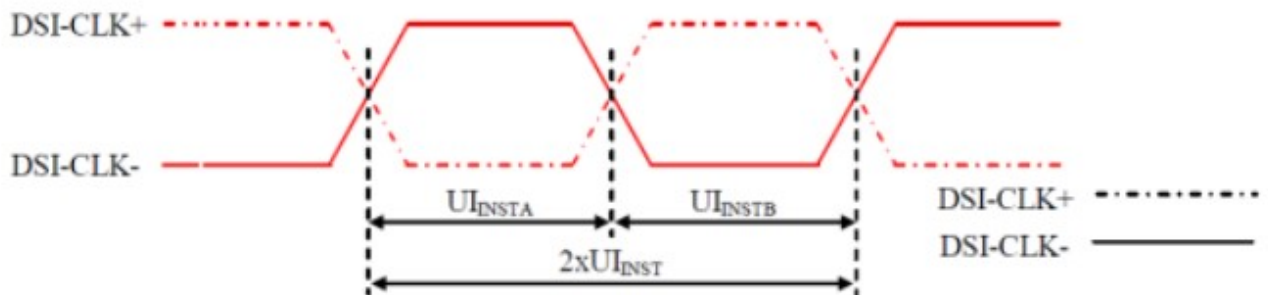
Ta = 25°C

Item	Symbol	Min	Typ	Max	Unit	Condition
Forward voltage	V _f	28.5	28.8	29.1	V	If=20mA
Number of LED	-	9X1			Piece	-
Connection mode	S/P	8Serial/1Parallel			-	-

Using condition: constant current driving method If= 1×20mA (+/-10%)

5.IMING CHARACTERISTICS

5.1 High Speed Mode-Clock Channel Timing

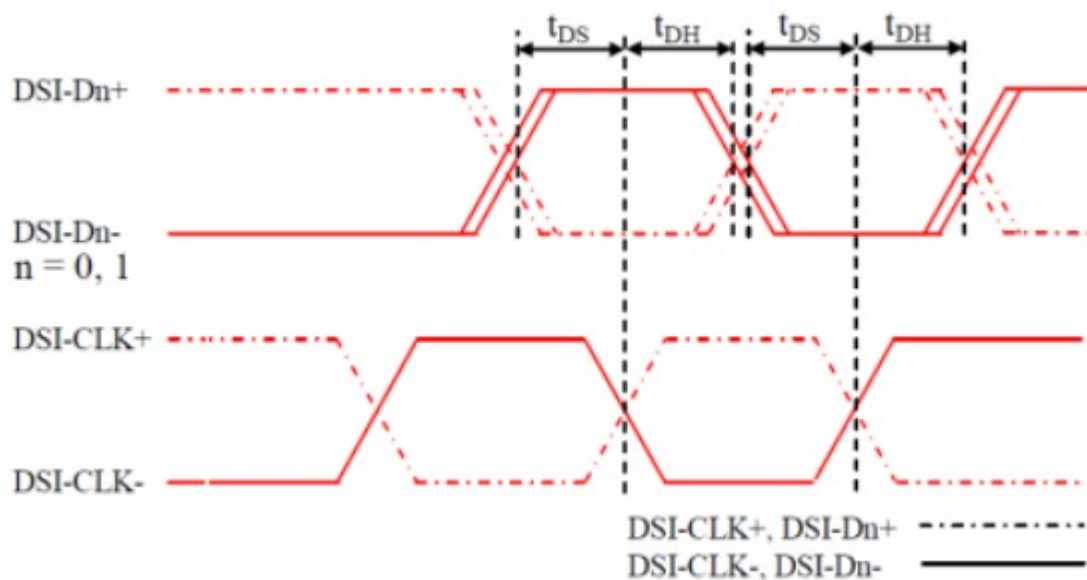


Signal	Symbol	Parameter	Min	Max	Unit
DSI-CLK+/-	$2xUI_{INST}$	Double UI instantaneous	4	25	ns
DSI-CLK+/-	UI_{INSTA}, UI_{INSTB}	UI instantaneous Half	2	12.5	ns

Note: $UI = UI_{INSTA} = UI_{INSTB}$

Figure 5.1.1 DSI Clock Channel Timing

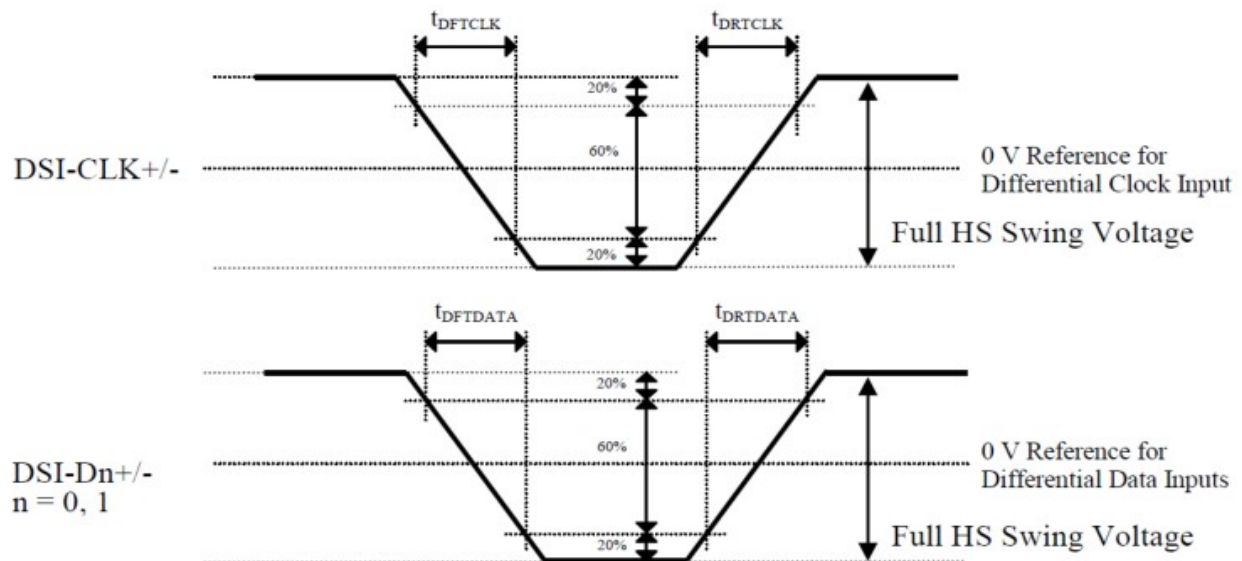
5.2 High Speed Mode-Data Clock Channel Timing



Signal	Symbol	Parameter	Min	Max
DSI-Dn+/- , n=0 or 1	t_{DS}	Data to Clock Setup time	$0.15xUI$	-
	t_{DH}	Clock to Data Hold Time	$0.15xUI$	-

Figure 5.2.1 Data to Clock Channel Timing

5.3 High Speed Mode-Rising and Falling Timings

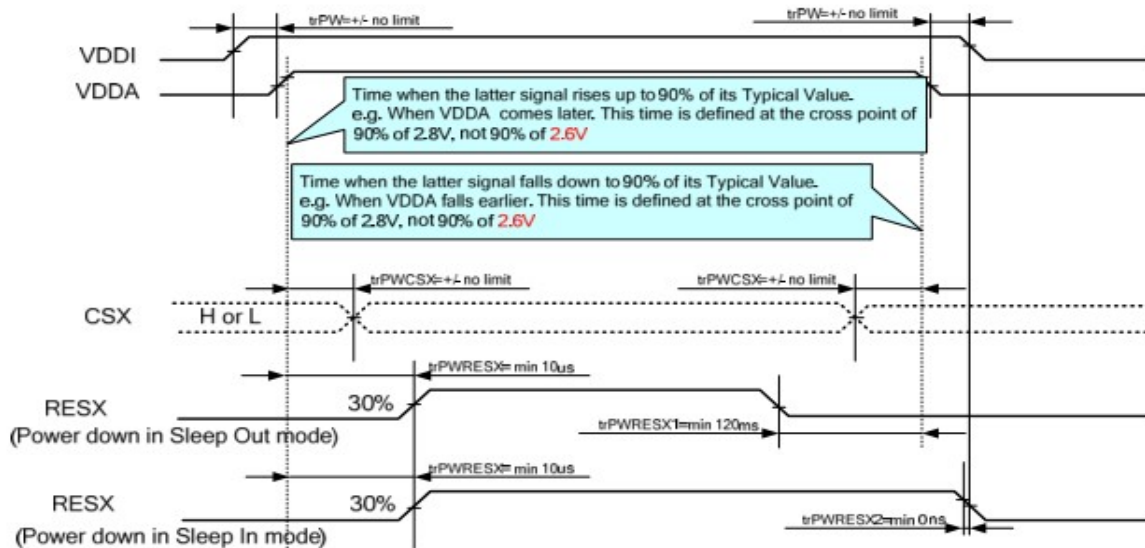


Parameter	Symbol	Condition	Specification			Unit
			Min	Typ	Max	
Differential Rising Time for Clock	t_{DRTCLK}	DSI-CLK+/-	-	-	150 (Note 1)	ps
Differential Rising Time for Data	$t_{DRTDATA}$	DSI-Dn+/- n=0 and 1	-	-	150 (Note 1)	ps
Differential Falling Time for Clock	t_{DFTCLK}	DSI-CLK+/-	-	-	150 (Note 1)	ps
Differential Falling Time for Data	$t_{DFTDATA}$	DSI-Dn+/- n=0 and 1	-	-	150 (Note 1)	ps

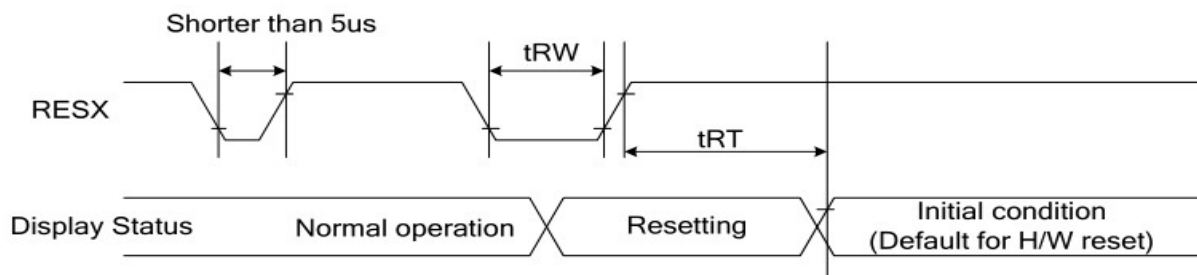
Note: The display module has to meet timing requirements, what are defined for the transmitter (MPU) on MIPI D-Phy standard.

Figure 5.3.1 Rising and Falling Timings on Clock and Data channels

5.4 VCI VDDI(IOVCC) Input power sequence



6. Reset Timing



Signal	Symbol	Parameter	Min	Max	Unit
RESX	tRW	Reset pulse duration	10		uS
	tRT	Reset cancel		5 (note 1,5)	mS
				120 (note 1,6,7)	mS

Notes:

- The reset cancel also includes required time for loading ID bytes, VCOM setting and other settings from EEPROM (or similar device) to registers.

This loading is done every time when there is HW reset cancel time (tRT) within 10 ms after a rising edge of RESX.

- Spike due to an electrostatic discharge on RESX line does not cause irregular system reset according to the table below :

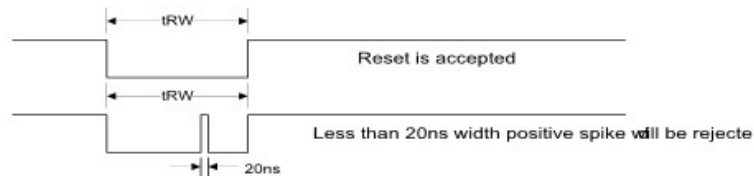
RESX Pulse	Action
Shorter than 5us	Reset Rejected
Longer than 9us	Reset
Between 5us and 9us	Reset starts

- During the Resetting period, the display will be blanked(The display is entering blanking sequence,

which maximum time is 120 ms, when Reset

Starts at Sleep-Out status. The display remains the blank state in Sleep-In mode). Then return to Default condition for Hardware Reset

4. Spike Rejection also applies during a valid reset pulse as shown below :



5. When Reset applied during Sleep-In Mode.

6. When Reset applied during Sleep-Out Mode

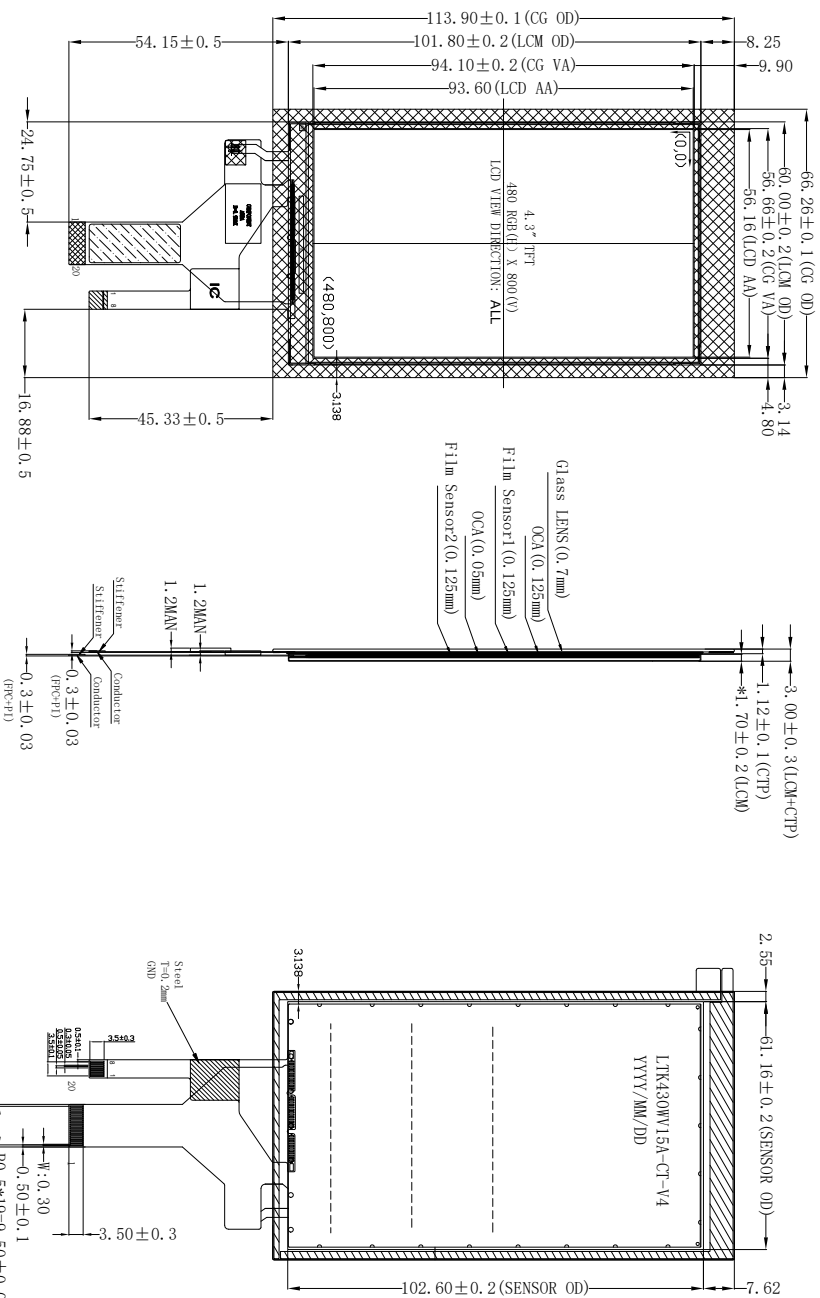
7. It is necessary to wait 10ms after releasing RESX before sending commands. Also Sleep Out command cannot be sent for 120 ms.

7.Mechanical Drawing

Front View

Side View

Back View



Pin	Symbol
1	LEA
2	LEK
3	VCI
4	IDVCC
5	/RESET
6	LEDPWM
7	GND
8	MPI_DIP
9	MPI_DIN
10	GND
11	MPI_CLKP
12	MPI_CLKN
13	GND
14	MPI_DOP
15	MPI_DDN
16	GND
17	TE
18	GND
19	NC
20	NC

CTP	
1	VDD28
2	RST
3	INT
4	NC
5	NC
6	SCL28V
7	SDA28V
8	GND


LEDA \circ \circ LEDK

 $V_F = 28.8 \pm 0.3 \text{ V}; I_F = 20 \text{ mA}$

BL CIRCUIT DIAGRAM:



LEADTEK COMPANY LIMITED

LEADTEX DISPLAY						
SCALE: 1/1	UNIT: mm	PAGE: 1/1		Approve	Check	Drawn
Part No:	LTK430WV15A-CT	VER: V4			JONA	IAN
Cus tomer No:						

Notes:

1. Display : 4.3", WGA TFT
2. Resolution: 480xRGBx800,
3. PolarizerMode: Transmissive/Positive
4. LCD Driver: ST7701S
5. LCM luminance: 280cd/m² (TYP),
LCM-CTP luminance: 230cd/m² (TYP), uniformity ≥80%
7. *:Critical dimension : () Reference dimension;
8. GENERAL TOLERANCE : ±0.2mm
9. OPERATING TEMP: -20° C ~ +70° C
10. STORAGE TEMP: -30° C ~ +80° C
11. Requirements on Environmental Protection: ROHS

Notes:

1. Structure: 0 + FF
2. Drying IC: 67911 (19 * 11)
3. Light transmittance: $\geq 87\%$.
4. Surface hardness: 6h, strengthening parameters: CS $\geq 450\text{MPa}$, dol $\geq 8\text{mm}$, Drop ball standard: 6kg steel ball, 50cm height, center point three times, no breakage;
5. Ink dye value: ≥ 32 ; TP surface ink adhesion requirements: 4B;
6. TP warpage: $\leq 0.3\text{mm}$;
7. Working environment: $-20^\circ\text{C} \sim +60^\circ\text{C}$, $\leq 90\%$ RH;
8. Storage environment: $-30^\circ\text{C} \sim +80^\circ\text{C}$, no more than 90% RH;
9. With "*" as the key control dimension, with () as the reference dimension, the unspecified dimension tolerance shall be $\pm 0.2\text{mm}$;
10. Environmental protection meets RoHS $\&\text{amp;}$ HF $\&\text{amp;}$ reach requirements;

D

8.INTERFACE SIGNAL

Pin No.	Symbol	Description
1	LEDA	LED backlight anode.
2	LEDK	LED backlight cathode
3	VCI	Power supply for the analog power
4	IOVCC	Power supply for the logic power and I/O circuit
5	/RESET	Reset signal(low active)
6	LEDPWM	The PWM frequency output for LED driver control
7	GND	Power ground
8	MIPI_D1P	MIPI-DSI data lane 1 positive input pin
9	MIPI_D1N	MIPI-DSI data lane 1 negative input pin
10	GND	Power ground
11	MIPI_CLKP	MIPI-DSI data lane positive input pin
12	MIPI_CLKN	MIPI-DSI data lane negative input pin
13	GND	Power ground
14	MIPI_D0P	MIPI-DSI data lane 0 positive input pin
15	MIPI_D0N	MIPI-DSI data lane 0 negative input pin
16	GND	Power ground
17	TE	Serves TE (Tearing Effect) pin on MPU interface
18	GND	Power ground
19	NC	NC
20	NC	NC

8.1 TP INTERFACE SIGNAL

13	VDD 2.8V	Digital Power.
14	RST	Reset pin. Active low to enter reset state.
15	INT	Interruption signal.
16	NC	NC.
17	NC	NC
18	SCL 2.8V	I2C_clock.
19	SDA 2.8V	I2C_data.
20	GND	Power ground.

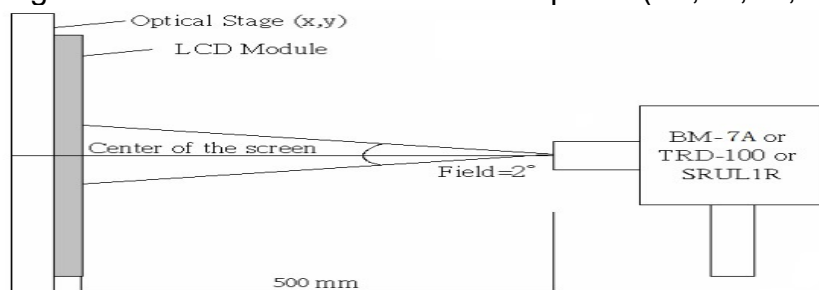
9.ELECTRO-OPTICAL CHARACTERISTICS

Item	Symbol	Condition	Min	Typ	Max	Unit	Note
Transmittance (w/o polarizer)	T%	$\theta=0^\circ$ $T_a=25^\circ\text{C}$	3.7	4.3	-	%	1
Contrast ratio	Cr		1000	1500	-	-	3
Response time	Ton+Toff		-	20	25	ms	4
Surface Luminance	LV		--	230	-	cd/m ²	2
Viewing angle range	H or V er	Θ_{x+}	-	80	-	deg	5
		Θ_{x-}	-	80	-	deg	
		Θ_{y+}	-	80	-	deg	
		Θ_{y-}	-	80	-	deg	
CIE(x,y) chromaticity	Red	x	0.625	0.645	0.665	-	6
		y	0.313	0.333	0.353	-	
	Green	x	0.304	0.324	0.344	-	
		y	0.550	0.570	0.590	-	
	Blue	x	0.114	0.134	0.154	-	
		y	0.104	0.124	0.144	-	
	White	x	0.27	0.30	0.33	-	
		y	0.29	0.32	0.35	-	

Note 1.Ambient condition: $25^\circ\text{C}\pm 2^\circ\text{C}$, $60\pm 10\%\text{RH}$, under 10 Lux in the darkroom.

Note 2.Measure device: BM-7A (TOPCON), viewing cone= 2°

Lv = Average Surface Luminance with all white pixels (P1,P2,P3,P4,P5)

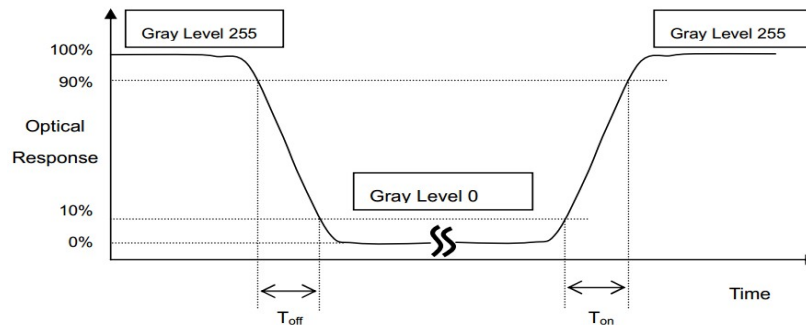


Note 3. Definition of Contrast Ratio:

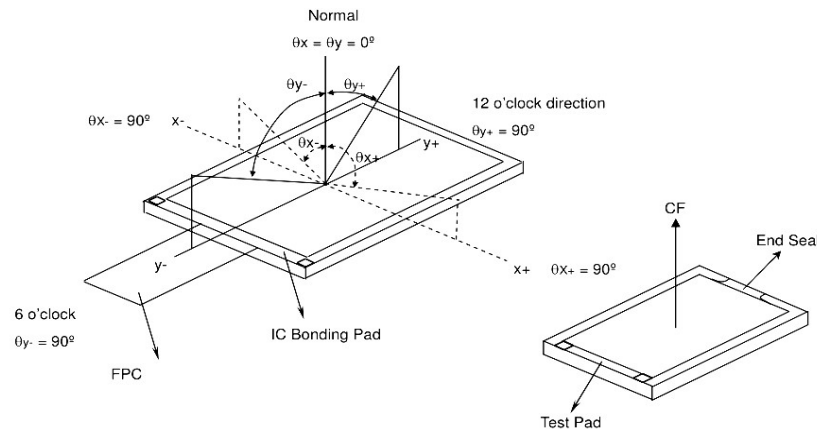
CR = Average Surface Luminance with all black pixels (P1,P2,P3,P4,P5)

Average Surface Luminance with all white pixels (P1,P2,P3,P4,P5)

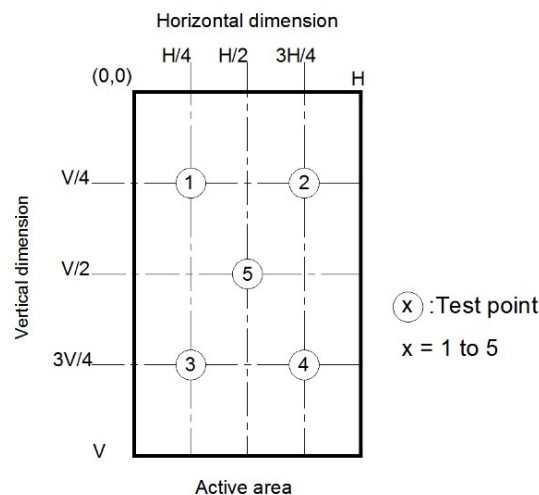
Note 4. Definition of Response Time (T_{on} , T_{off}), The response time is defined as the time interval between the 10% and 90% amplitudes.



Note 5. Definition of view angle(θ , ψ):



Note 6. The LCD module should be stabilized at a given temperature for 20 minutes to avoid abrupt temperature change during measuring. In order to stabilize the luminance, the measurement should be executed after lighting Backlight for 20 minutes in a windless room. Measuring method for Contrast ratio, surface luminance, Luminance uniformity, CIE(x,y) chromaticity.



Light spot size $\varnothing=7\text{mm}$, 500mm distance from the LCD surface to detector lens
measurement instrument is TOPCON's luminance meter BM-7

10.RELIABILITY TEST

Reliability test conditions (Polarizer characteristics null)

No.	Items	Condition	Inspection after test
1	High Temperature Storage	T = 80℃ ± 2℃ for 48 hr	Inspection after 4 hours storage at room temperature, the sample shall be free from defects: 1.Air bubble in the LCD 2.Sealleak; 3.Non-display; 4.missing segments; 5.Glass crack; 6.Current Idd is twice higher than initial value.
2	Low Temperature Storage	T = -30℃ ± 2℃ for 48 hr	
3	High Temperature Operating	T = 70℃ ± 2℃ for 48 hr	
4	Low Temperature Operating	T = -20℃ ± 2℃ for 48 hr (But no condensation of dew)	
5	High Temp. and High Humidity Operating	T = 60℃ ± 5℃ /90% for 48 hr (But no condensation dew)	
6	Thermal Shock	-20±2℃~25~70±2℃×10cycles (30min.) (5min.) (30min.)	
7	Dropping test (non-operation)	Drop to the ground from 76cm height, one time, every side of carton. (Packing condition)	
8	Packing Vibration (non-operation)	Frequency: 10Hz~55Hz~10Hz Amplitude: 1.0mm, X, Y, Z direction for total 3hours (Packing condition)	
9	ESD	Voltage:±6KV R: 330Ω C: 150pF Air discharge, 10time	

Note:

- (1)The test samples should be applied to only one test item.
- (2)Sample size for each test item is 5~10pcs.
- (3)In case of malfunction defect caused by ESD damage, if it would be recovered to normal state after resetting, it would be judge as a good part.
Using ionizer(an antistatic blower) is recommended at working area in order to reduce electro-static voltage.
When removing protection film from LCM panel, peel off the tag slowly (recommended more than one second) while blowing with ionizer toward the peeling face to minimize ESD which may damage electrical circuit.
- (4) Please use automatic switch testing mode when test operating mode.

11.INSPECTION CRITERION

This specification is made to be used as the standard acceptance/rejection criteria for Normal LCM Product.

1 Sample plan

Sampling plan according to GB/T2828.1-2003/ISO 2859-1: 1999 and ANSI/ASQC Z1.4-1993,normal level 2 and based on:

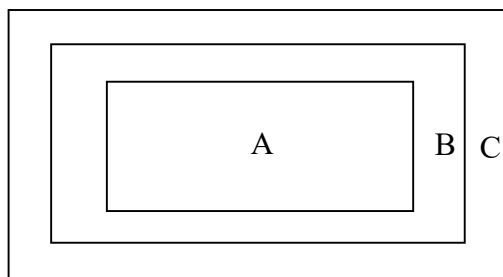
Major defect: AQL 0.65

Minor defect: AQL 1.0

2. Inspection condition

Viewing distance for cosmetic inspection is about 30cm with bare eyes, and under an environment of 20~40W light intensity, all directions for inspecting the sample should be within 45° against perpendicular line. (Normal temperature 20~25°C and normal humidity 60±15%RH).

3. Definition of inspection zone in LCD.



Zone A: character/Digit area

Zone B: viewing area except Zone A (Zone A + Zone B=minimum Viewing area)

Zone C: Outside viewing area (invisible area after assembly in customer's product)

Fig.1 Inspection zones in an LCD.

Note: As a general rule, visual defects in Zone C are permissible, when it is no trouble for quality and assembly of customer's product.

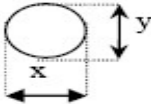
4.Standards of inspection items

4.1 Major Defect

Item No	Items to be inspected	Inspection Standard	Classification of defects
4.1.1	All functional defects	1.No display	Major
		2.Display abnormally	
		3.Missing vertical, horizontal segment	

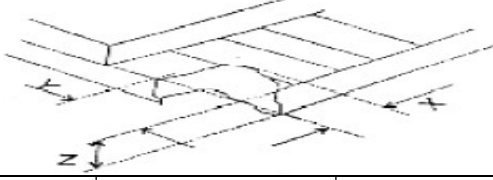
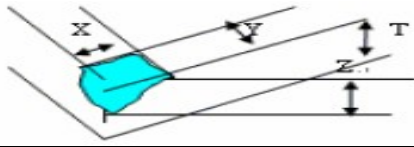
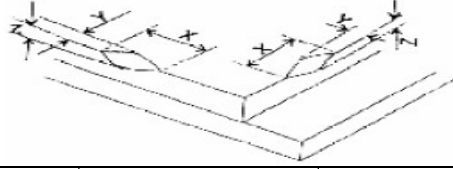
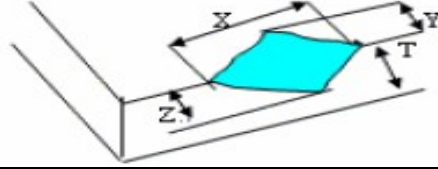
		4.Short circuit	
		5. Back-light no lighting, flickering and abnormal lighting.	
4.1.2	Missing	Missing component	
4.1.3	Outline dimension	Overall outline dimension beyond the drawing is not allowed.	
4.1.4	linearity	No more than 1.5%	

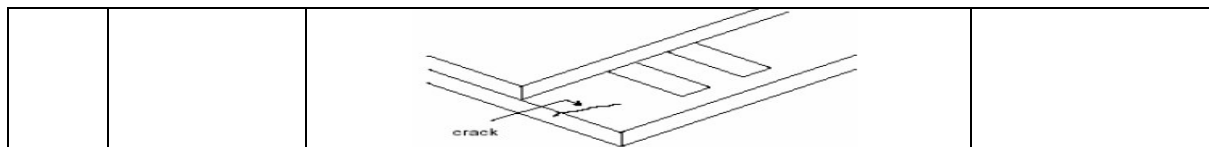
4.2 Cosmetic Defect

Item No	Items to be inspected	Inspection Standard				Classification of defects		
4.2.1	Clear Spots Black and white Spot defect Pinhole, Foreign Particle, polarizer Dirt	For dark/white spot, size Φ is defined as $\Phi = \frac{(x + y)}{2}$ <div></div>				Minor		
		1						
		Zone Size(mm)	Acceptable Qty					
			A	B	C			
		$\Phi \leq 0.15$	Ignore		Ignore			
		$0.15 < \Phi \leq 0.20$	2					
		$0.20 < \Phi \leq 0.30$	1					
		$\Phi > 0.30$	0					
		Clear Spots TP Dirt	2				Minor	
			Zone Size(mm)	Acceptable Qty				
	A			B	C			
	$\Phi \leq 0.15$		Ignore		Ignore			
	$0.15 < \Phi \leq 0.20$		2					
	$0.20 < \Phi \leq 0.30$		1					
	$\Phi > 0.30$		0					
	Dim Spots Circle shaped and dim edged defects		3					Minor
		Zone Size(mm)	Acceptable Qty					
			A	B	C			
		$\Phi \leq 0.2$	Ignore		Ignore			
		$0.20 < \Phi \leq 0.40$	2					

		$0.40 < \Phi \leq 0.60$	1				
		$\Phi > 0.60$	0				
Item No	Items to be inspected	Inspection Standard				Classification of defects	
4.2.2	Line defect Black line, White line, Foreign material on polarizer	Size(mm)		Acceptable Qty		Minor	
		L(Length)	W(Width)	Zone			
				A	B		C
		Ignore	$W \leq 0.05$	Ignore	Ignore		
		$L \leq 5.0$	$0.05 < W \leq 0.08$	2			
			$W > 0.08$	0			
	Foreign material on TP film	The line can be seen after mobile phone in the operating condition:				Minor	
		Size(mm)		Acceptable Qty			
		L(Length)	W(Width)	Zone			
				A	B		C
		Ignore	$W \leq 0.05$	Ignore	Ignore		
		$L \leq 5.0$	$0.05 < W \leq 0.08$	3			
			$W > 0.08$	0			
	4.2.3	Dim line defect Polarizer scratch TP film scratch	If the scratch can be seen after mobile phone cover assembling or in the operating condition, judge by the line defect of 4.2.2. If the scratch can be seen only in non-operating condition or some special angle, judge by the following.				Minor
Size(mm)			Acceptable Qty				
L(Length)			W(Width)	Zone			
				A	B	C	
Ignore			$W \leq 0.03$	Ignore	Ignore		
$5.0 < L \leq 10.0$			$0.03 < W \leq 0.05$	2			
$L \leq 5.0$			$0.05 < W \leq 0.08$	1			
			$W > 0.08$	0			
4.2.4		Polarize Air bubble	Air bubbles between glass & polarizer				Minor
	Zone Size(mm)		Acceptable Qty				
			A	B	C		
	$\Phi \leq 0.20$		Ignore		Ignore		
	$0.20 < \Phi \leq 0.3$		2				

		$\Phi > 0.30$	0		
--	--	---------------	---	--	--

Item No	Items to be inspected	Inspection Standard			Classification of defects
4.35	Glass defect	(i) Chips on corner A:LCD Glass defect			Minor
					
		X(mm)	Y(mm)	Z(mm)	
		≤3.0	≤3.0	Disregard	
		Notes: S=contact pad length Chips on the corner of terminal shall not be allowed to extend into the ITO pad or expose perimeter seal. B:TP Glass defect			
					
		X(mm)	Y(mm)	Z(mm)	
		≤3.0	≤3.0	Disregard	
		(ii) Usual surface cracks A:LCD Glass defect			
					
		X(mm)	Y(mm)	Z(mm)	
		≤3.0	<Inner border line of the seal	Disregard	
		B:TP Glass defect			
					
		X(mm)	Y(mm)	Z(mm)	
		≤6.0	<2.0	Disregard	
		(iii) Crack Cracks tend to break are not allowed.			



12.PRECAUTIONS FOR USE OF LCD MODULES

1. Handling Precautions

- (1) The display panel is made of glass and polarizer. As glass is fragile. It tends to become or chipped during handling especially on the edges. Please avoid dropping or jarring. Do not subject it to a mechanical shock by dropping it or impact.
- (2) If the display panel is damaged and the liquid crystal substance leaks out, be sure not to get any in your mouth. If the substance contacts your skin or clothes, wash it off using soap and water.
- (3) Do not apply excessive force to the display surface or the adjoining areas since this may cause the color tone to vary. Do not touch the display with bare hands. This will stain the display area and degraded insulation between terminals (some cosmetics are determined to the polarizer).
- (4) The polarizer covering the display surface of the LCD module is soft and easily scratched. Handle this polarizer carefully. Do not touch, push or rub the exposed polarizers with anything harder than an HB pencil lead (glass, tweezers, etc.). Do not put or attach anything on the display area to avoid leaving marks on. Condensation on the surface and contact with terminals due to cold will damage, stain or dirty the polarizer. After products are tested at low temperature they must be warmed up in a container before coming is contacting with room temperature air.
- (5) If the display surface becomes contaminated, breathe on the surface and gently wipe it with a soft dry cloth. If it is heavily contaminated, moisten cloth with one of the following solvents
 - Isopropyl alcohol
 - Ethyl alcohol
 Do not scrub hard to avoid damaging the display surface.
- (6) Solvents other than those above-mentioned may damage the polarizer. Especially, do not use the following.
 - Water
 - Ketone
 - Aromatic solvents
 Wipe off saliva or water drops immediately, contact with water over a long period of time may cause deformation or color fading. Avoid contacting oil and fats.
- (7) Exercise care to minimize corrosion of the electrode. Corrosion of the electrodes is accelerated by water droplets, moisture condensation or a current flow in a high-humidity environment.
- (8) Install the LCD Module by using the mounting holes. When mounting the LCD module make sure it is free of twisting, warping and distortion. In particular, do not forcibly pull or bend the IO cable or the backlight cable.

- (9) Do not attempt to disassemble or process the LCD module.
- (10) NC terminal should be open. Do not connect anything.
- (11) If the logic circuit power is off, do not apply the input signals.
- (12) Electro-Static Discharge Control, Since this module uses a CMOS LSI, the same careful attention should be paid to electrostatic discharge as for an ordinary CMOS IC. To prevent destruction of the elements by static electricity, be careful to maintain an optimum work environment.
- Before remove LCM from its packing case or incorporating it into a set, be sure the module and your body have the same electric potential. Be sure to ground the body when handling the LCD modules.
 - Tools required for assembling, such as soldering irons, must be properly grounded. Make certain the AC power source for the soldering iron does not leak. When using an electric screwdriver to attach LCM, the screwdriver should be of ground potentiality to minimize as much as possible any transmission of electromagnetic waves produced sparks coming from the commutator of the motor.
 - To reduce the amount of static electricity generated, do not conduct assembling and other work under dry conditions. To reduce the generation of static electricity be careful that the air in the work is not too dried. A relative humidity of 50%-60% is recommended. As far as possible make the electric potential of your work clothes and that of the work bench the ground potential
 - The LCD module is coated with a film to protect the display surface. Exercise care when peeling off this protective film since static electricity may be generated
- (13) Since LCM has been assembled and adjusted with a high degree of precision, avoid applying excessive shocks to the module or making any alterations or modifications to it.
- Do not alter, modify or change the shape of the tab on the metal frame.
 - Do not make extra holes on the printed circuit board, modify its shape or change the positions of components to be attached.
 - Do not damage or modify the pattern writing on the printed circuit board.
 - Absolutely do not modify the zebra rubber strip (conductive rubber) or heat seal connector.
 - Except for soldering the interface, do not make any alterations or modifications with a soldering iron.
 - Do not drop, bend or twist LCM.

2. Storage precautions

2.1 When storing the LCD modules, avoid exposure to direct sunlight or to the light of fluorescent lamps.

2.2 The LCD modules should be stored under the storage temperature range. If the LCD modules will be stored for a long time, the recommend condition is:

Temperature : 0℃ ~ 40℃ Relatively humidity: ≤80%

2.3 The LCD modules should be stored in the room without acid, alkali and harmful gas.

2.4 The LCD modules should be no falling and violent shocking during transportation, and also should avoid excessive press, water, damp and sunshine.

13.0 Packing form TBD