

2JS50

5.0 GHz ISM Surface Mount

Key Features

5.0 GHz ISM

- 4920-5925 MHz

Surface Mount

Easy to Integrate

Compact Size

Ceramic Material

Ground Plane Dependent

Dimensions 13x 13 x 4 mm



1. Antenna and electrical specifications

Parameters	5.0 GHz ISM Antenna
Standards	WiFi, BT, ZigBee, ISM,
Band (MHz)	5500
Frequency (MHz)	4920-5925
Return Loss (dB)	~-10.0
VSWR	~2.5:1
Efficiency (%)	~65.9
Peak Gain (dBi)	~-5.1
Average Gain (dB)	~-2.0
Impedance (Ohm)	50
Radiation Pattern	Hemispherical

Antenna Measurement Conditions:

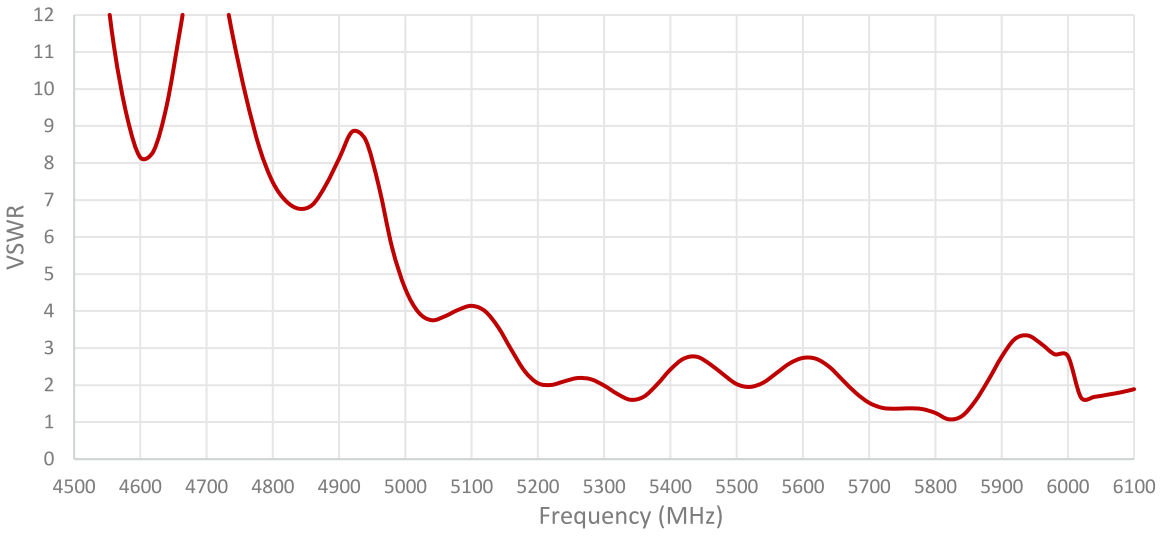
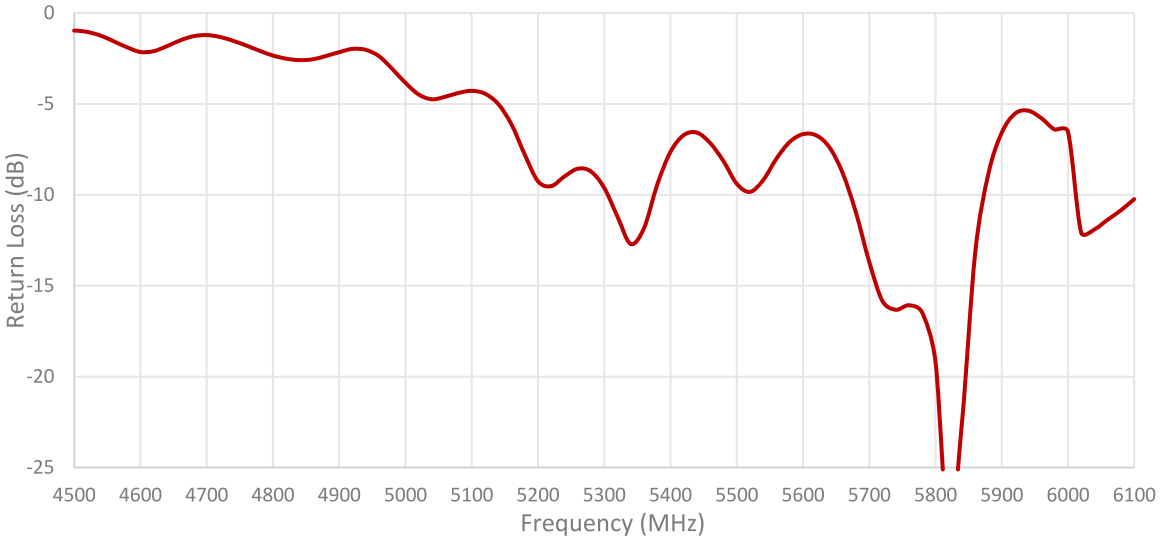
Mounted on ground plane of 70 x 70 mm

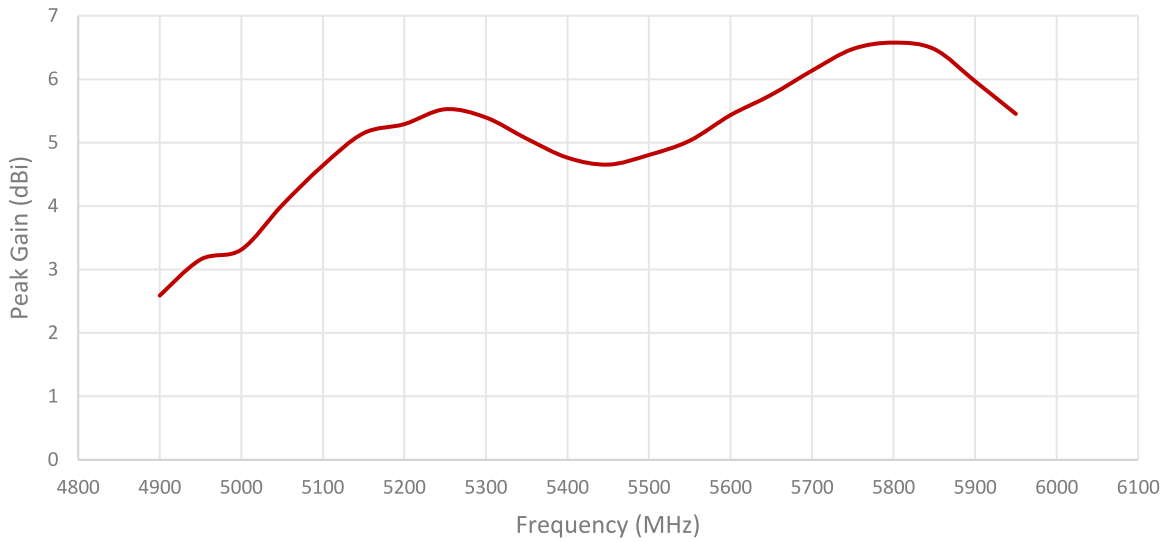
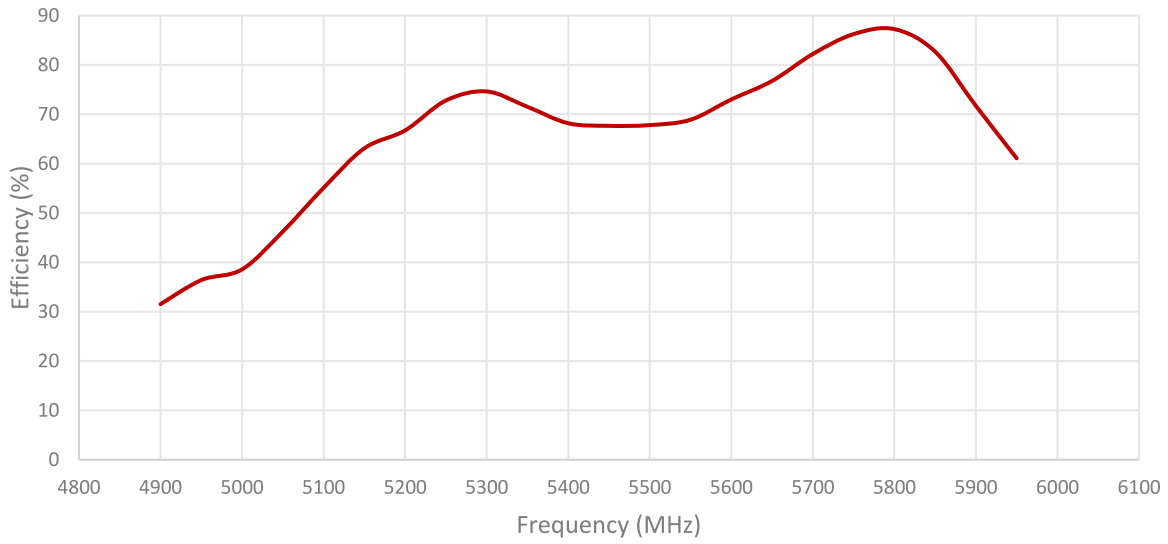
Measured in Certified CTIA 3D Anechoic Chamber

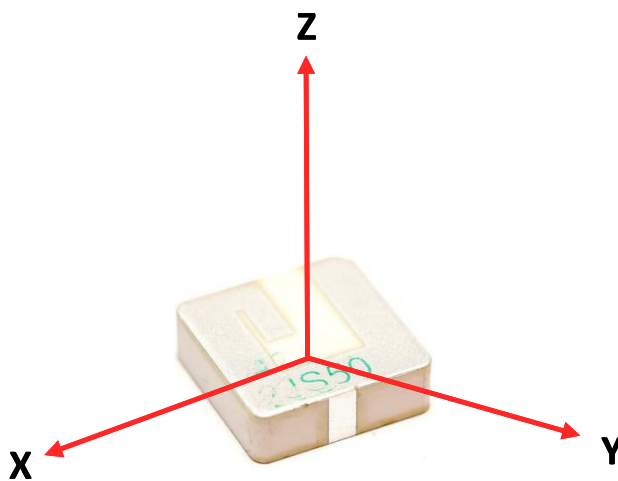
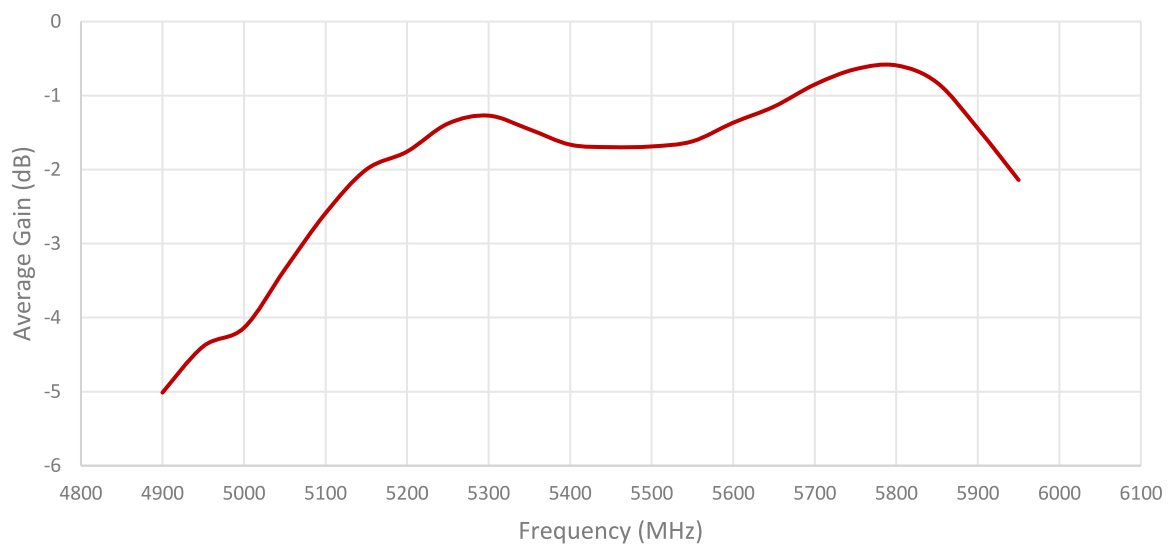
2. Mechanical and environmental specifications

Specifications	2JS50
Mounting Type	Surface Mount
Dimensions (mm)	13 x 13 x 4
Material	Ceramic
Operating Temperature (C)	-40 to +85
Storage Temperature (C)	-40 to +85
Substance Compliance	RoHS
Typical Shear Force Test	50Kgf according to IEC62137-1-2:2007

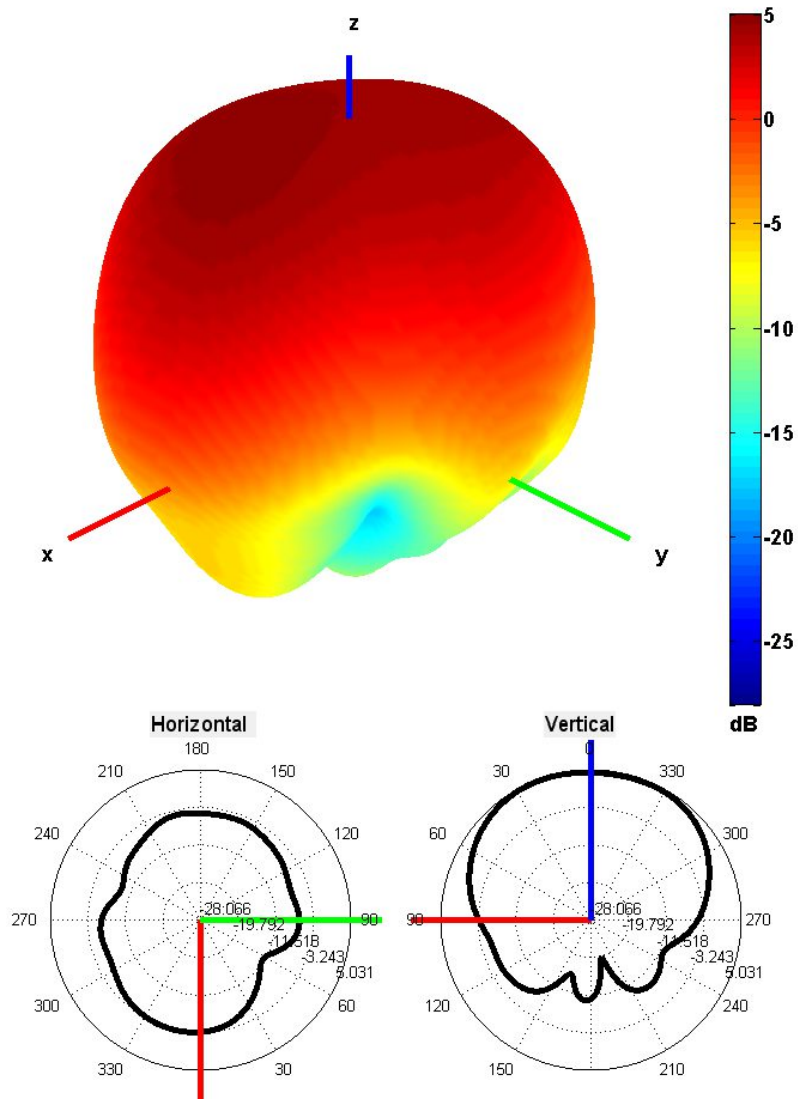
3. Antenna parameters





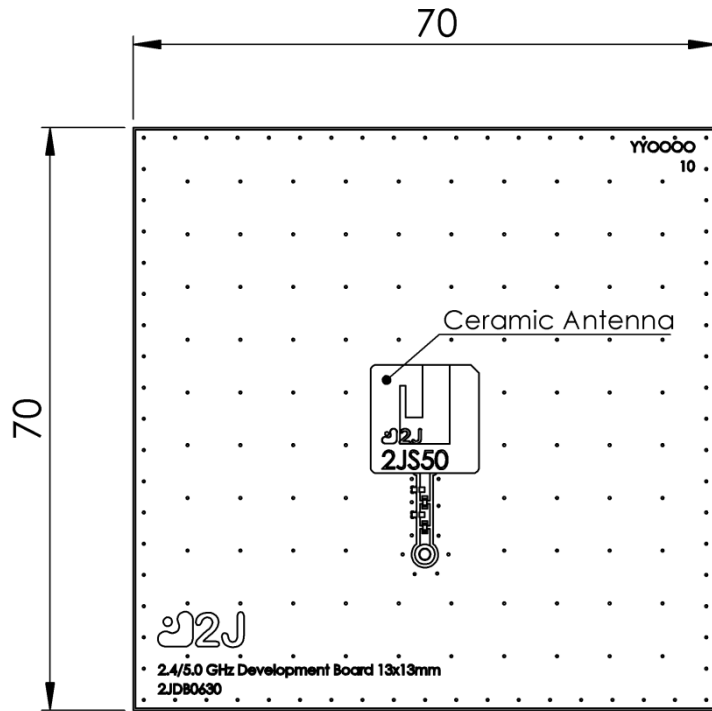


Radiation pattern reference

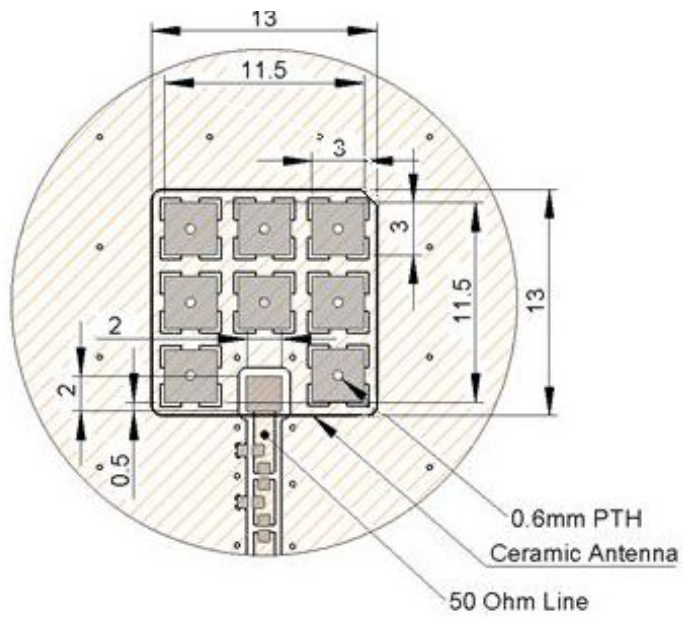


5500 MHz Radiation pattern

4. PCB Layout

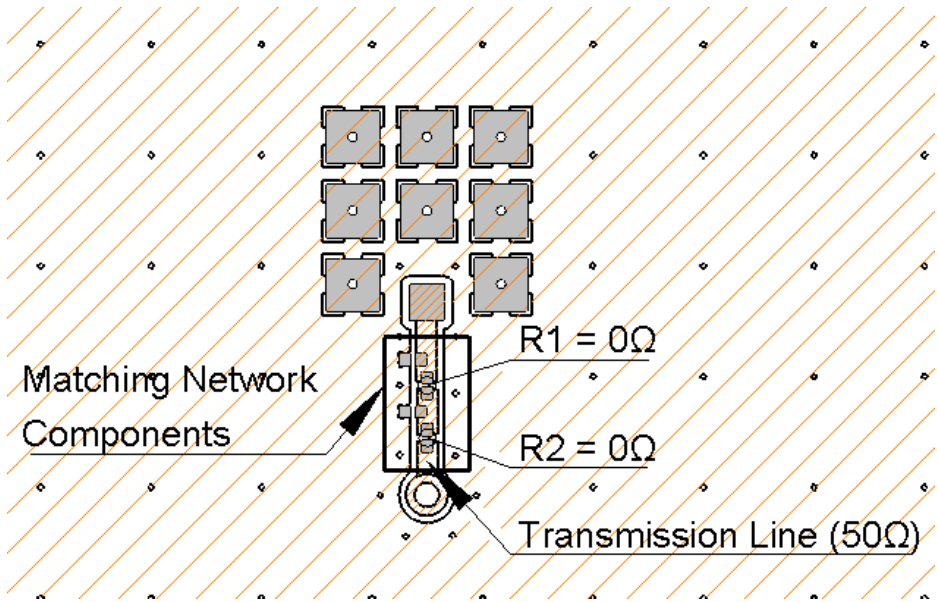


Recommended PCB Dimensions

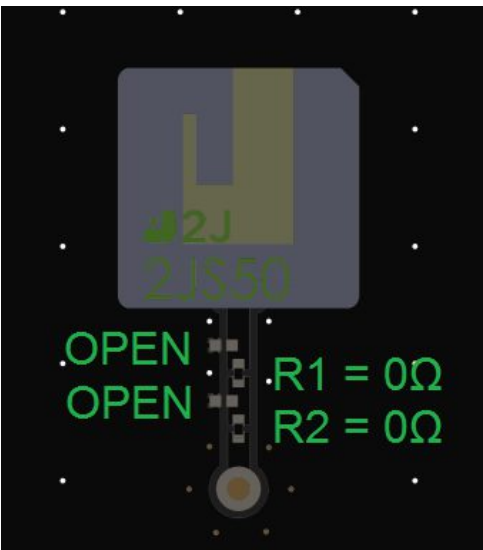


Layout dimensions for antenna integration (mm)

5. Matching Components

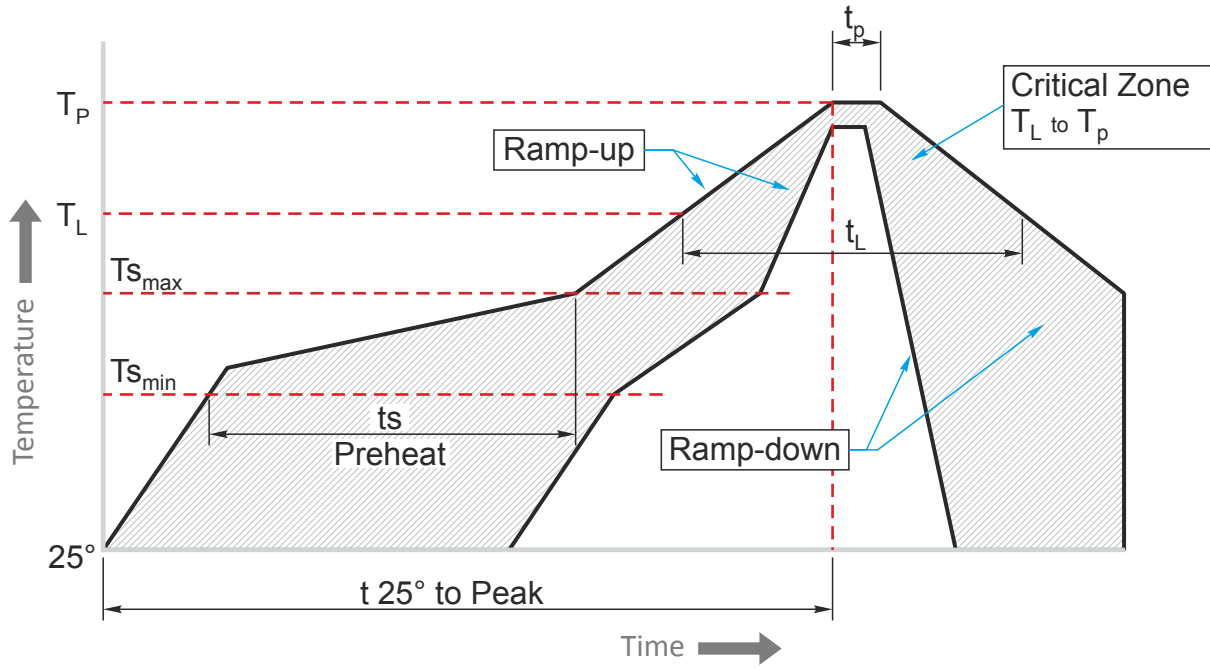


Matching Network Drawing



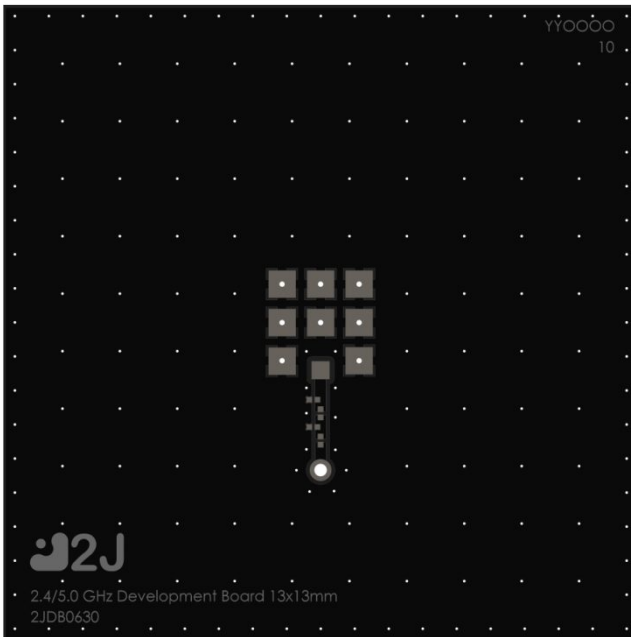
3D View of matching components and recommended values

REFLOW TEMPERATURE PROFILE

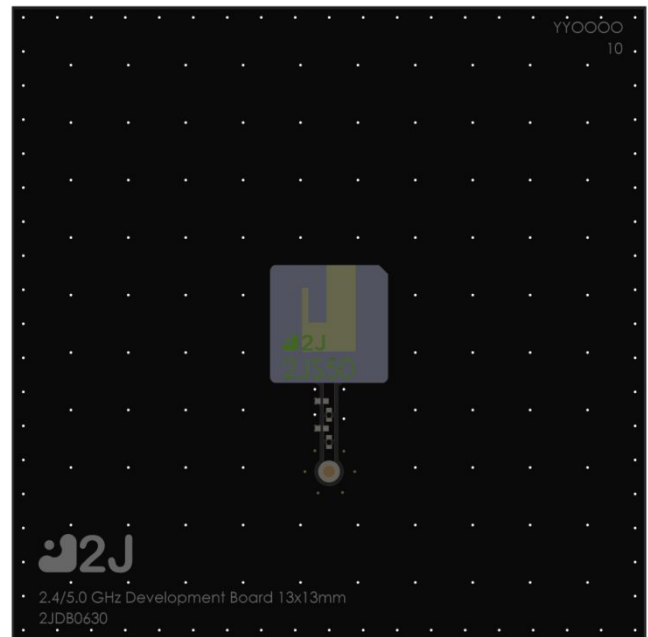


Phase	Profile features	Pb-Free Assembly (SnAgCu)
RAMP-UP	Avg. Ramp-up Rate ($T_{s_{max}}$ to T_p)	3°C / second (max)
PREHEAT	-Temperature Min Rate ($T_{s_{min}}$) -Temperature Max Rate ($T_{s_{min}}$) -Time ($t_{s_{min}}$ to $t_{s_{max}}$)	150°C 200°C 60-120 seconds
REFLOW	-Temperature (T_L) -Total Time above T_L (t_L)	217°C 30-100 seconds
PEAK	-Temperature (T_p) -Time (t_p)	245°C 2-5 seconds
RAMP-DOWN	Rate	3°C / second max.
Time from 25°C to Peak Temperature		8 minutes max.

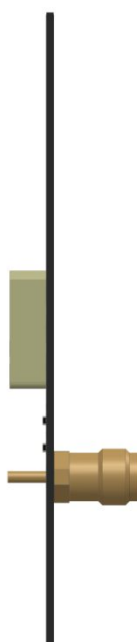
6. Evaluation Board



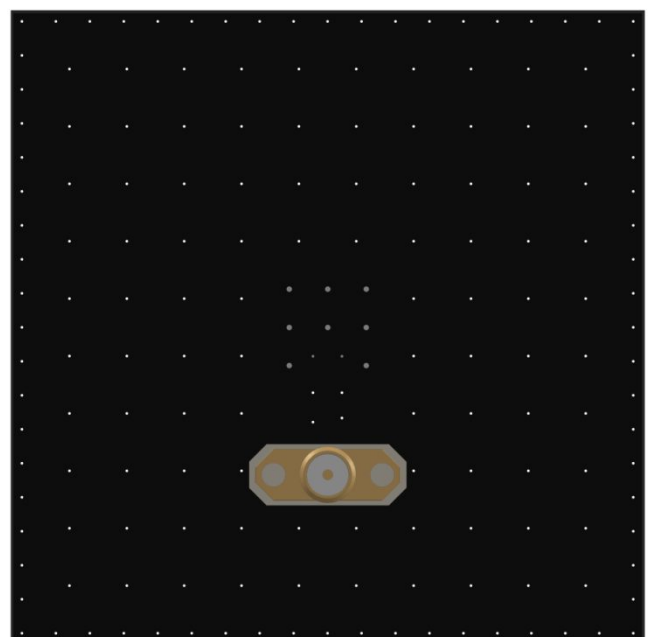
Front View without Antenna



Front View with Antenna

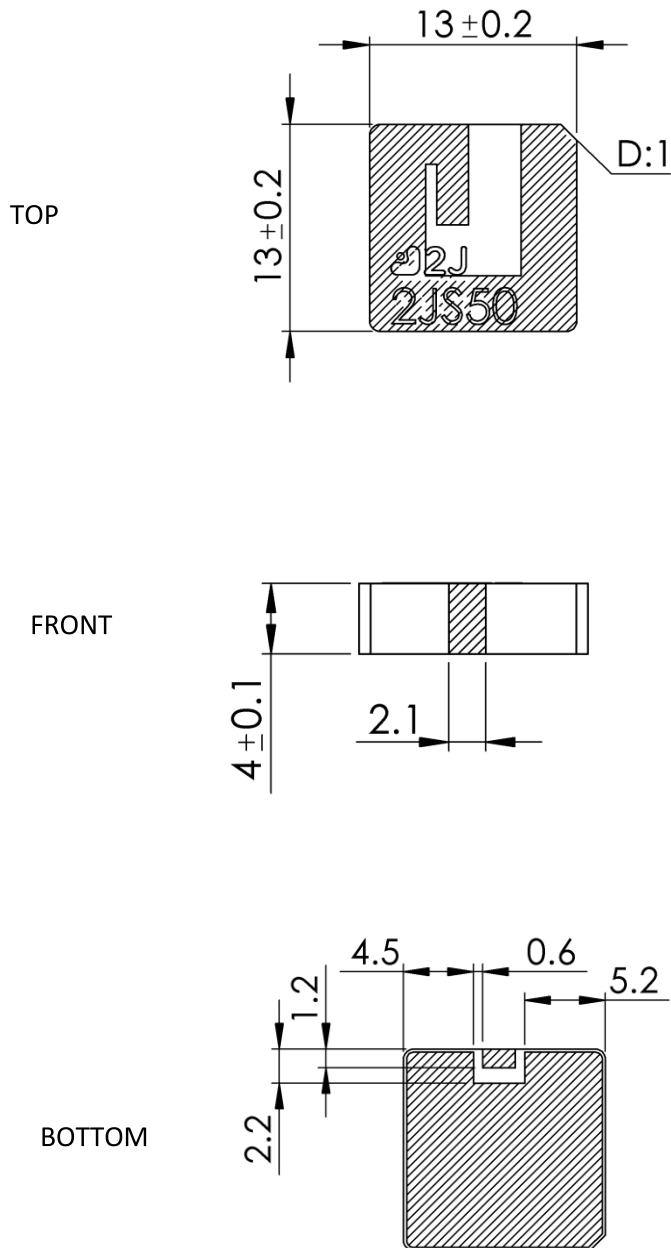


Side View



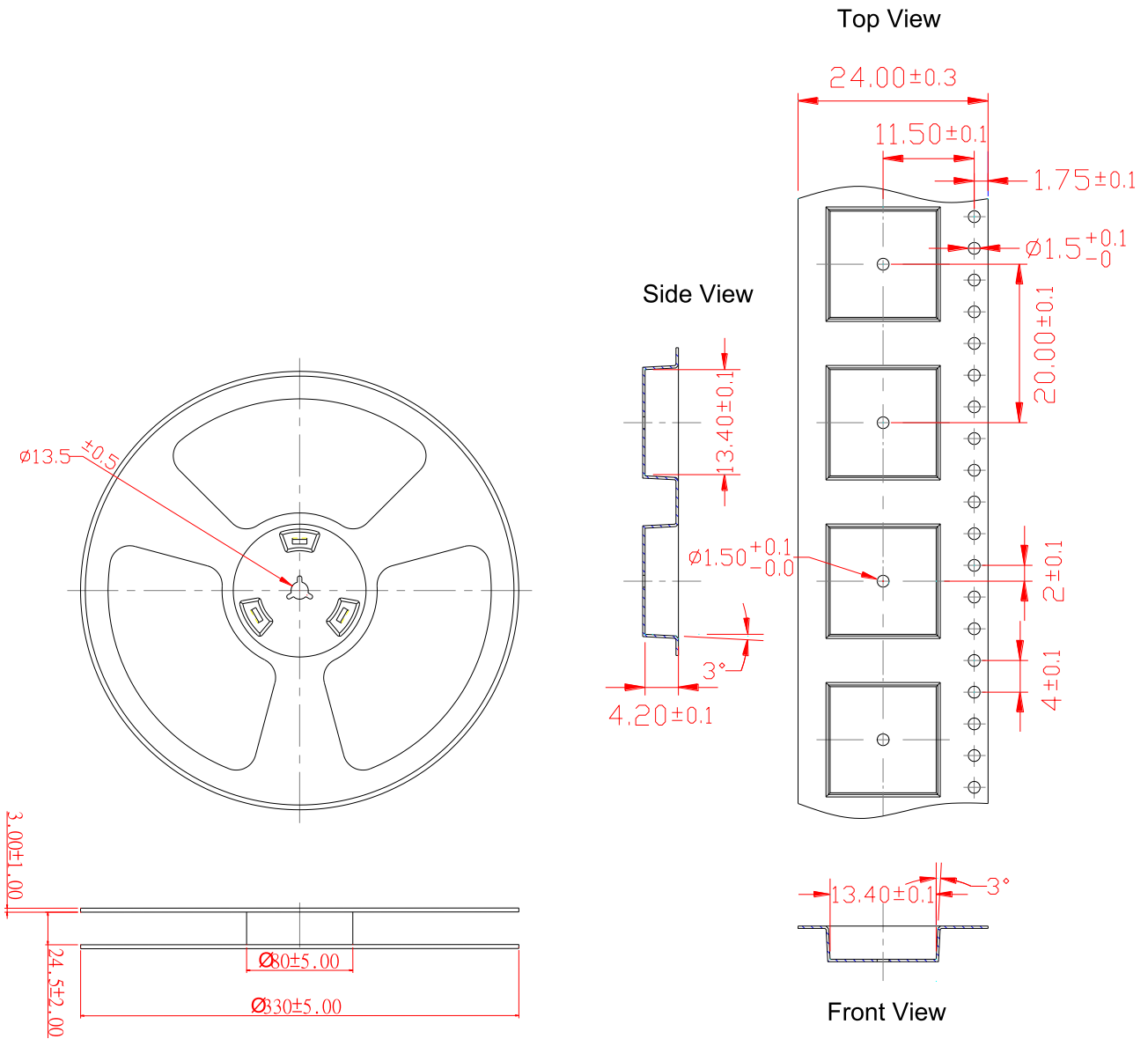
Back View

7. Antenna drawings



Dimensions for ceramic antenna 13 x 13 x 4 mm

8. Tape and Reel Information



Tape and Reel Specifications

9. Packaging

PACKAGING SPECIFICATION

Antenna	2JS50
REEL	
Max Quantity per Reel	500
REEL BOX	
Reels per Box	1
Max Quantity per Box	500
Reel Box Dimensions (cm)	34 x 34 x 4
Reel Box Weight (Kg)	2.26
CARTON	
Reels per Carton	5
Max Quantity per Carton	2500
Reel Carton Dimensions (cm)	36 x 36 x 23
Reel Carton Weight (Kg)	11.3

Storage Conditions:

- Storage Temperature Range: -40 °C to +85 °C
- Oxidizable material. Store for 12 months in vacuum sealed bag.
- Repack material after use by re-sealing package.

10. Antenna Images





Макро Групп – это:

- дистрибьютор электронных компонентов с 1994 года
- контрактный производитель электроники с 2007 года с собственным производством в Санкт-Петербурге (компания Макро EMC, входит в ГК Макро Групп)
- поставщик полупроводниковых материалов
- комплексный поставщик электронных компонентов
- моделирование и производство полупроводниковых эпитаксиальных гетероструктур для задач оптоэлектроники

Головной офис расположен в Санкт-Петербурге. Собственные представительства в крупных промышленных городах России и стран СНГ.

Преимущества для наших заказчиков:

- работа по тендерам с 2012 года
- оформление банковских гарантий
- отсрочки платежей
- поставка электронных компонентов по проектным ценам
- инженерная поддержка проектов заказчиков
- сертификат системы менеджмента качества ISO 9001-2015
- необходимые сертификаты и лицензии

Данный файл получен с сайта www.macrogroup.ru