



ES60601-1



EN62368-1

RoHS



EN60601-1

FEATURES

- Universal 90 - 264VAC or 127 - 370VDC input voltage
- Operating ambient temperature range: -40°C to +70°C
- Built-in active PFC function
- Output short circuit, over-current, over-voltage protection, over-temperature protection
- 320W with air cooling, 550W with 25CFM
- 5VDC standby output, 12VDC fan supply
- PG signal and remote sensing function
- Medical approved, suitable for BF application
- The base plate with conformal coating
- Operating altitude up to 5000m

LOF550-20Bxx-C(-CF) series is one of Mornsun's enclosed AC-DC switching power supply and suitable for all kinds of BF type (be accessible to patients) medical system equipment. It features universal AC input and at the same time accepts DC input voltage, cost-effective, low no load power consumption, high efficiency, high reliability and double or reinforced insulation. These converters offer excellent EMC performance and meet IEC/EN/UL62368, GB4943, IEC/EN60335, EAC TP TC 004, IEC/EN/ES60601-1 standards and they are widely used in areas of industrial, LED, street light control, electricity, security, telecommunications, smart home, etc.

Selection Guide

Certification	Part No.*	Cooling method*	Output Power *	Nominal Output Voltage and Current(Vo/Io)	Output Voltage Adjustable Range ADJ (V)	Efficiency at 230VAC (%) Typ. *	Capacitive Load (μF) Max.
UL/EN	LOF550-20B12-C	Air cooling	309.6	12V/25.8A	11.4 - 12.6	91	6000
		25CFM	499.2	12V/41.6A			
	LOF550-20B15-C	Air cooling	310.5	15V/20.7A	14.25 - 15.75	92	6000
		25CFM	499.5	15V/33.3A			
--	LOF550-20B18-C	Air cooling	320.4	18V/17.8A	17.1 - 19.9	92.5	6000
		25CFM	500.4	18V/27.8A			
	LOF550-20B19-C	Air cooling	319.2	19V/16.8A			
		25CFM	499.7	19V/26.3A			
UL/EN	LOF550-20B24-C	Air cooling	309.6	24V/12.9A	22.8 - 25.2	93	6000
		25CFM	549.6	24V/22.9A			
	LOF550-20B27-C	Air cooling	310.5	27V/11.5A	25.65 - 28.35	93.5	4000
		25CFM	550.8	27V/20.4A			
	LOF550-20B36-C	Air cooling	309.6	36V/8.6A	34.2 - 37.8	94	3000
		25CFM	550.8	36V/15.3A			
	LOF550-20B48-C	Air cooling	312.0	48V/6.5A	45.6 - 50.4	94	2000
		25CFM	550.0	48V/11.46A			
--	LOF550-20B54-C	Air cooling	310.5	54V/5.75A	51.3 - 56.7	94	1500
		25CFM	550.8	54V/10.2A			
UL/EN	LOF550-20B12-CF	Forced air cooling, 25CFM	499.2	12V/41.6A	11.4 - 12.6	91	6000
	LOF550-20B15-CF	Forced air cooling, 25CFM	499.5	15V/33.3A	14.25 - 15.75	92	6000
--	LOF550-20B18-CF	Forced air cooling, 25CFM	500.4	18V/27.8	17.1 - 19.9	92.5	6000
	LOF550-20B19-CF	Forced air cooling, 25CFM	499.7	19V/26.3			
UL/EN	LOF550-20B24-CF	Forced air cooling, 25CFM	549.6	24V/22.9A	22.8 - 25.2	93	6000

AC/DC 550W Enclosed Switching Power Supply

LOF550-20Bxx-C(-CF)Series

MORNSUN®

Selection Guide

Certification	Part No.*	Cooling method*	Output Power *	Nominal Output Voltage and Current(Vo/Io)	Output Voltage Adjustable Range ADJ (V)	Efficiency at 230VAC (%) Typ. *	Capacitive Load (μF) Max.
	LOF550-20B27-CF	Forced air cooling, 25CFM	550.8	27V/20.4A	25.65 - 28.35	93.5	4000
	LOF550-20B36-CF	Forced air cooling, 25CFM	550.8	36V/15.3A	34.2 - 37.8	94	3000
	LOF550-20B48-CF	Forced air cooling, 25CFM	550.0	48V/11.46A	45.6 - 50.4	94	2000
--	LOF550-20B54-CF	Forced air cooling, 25CFM	550.8	54V/10.2	51.3 - 56.7	94	1500

Notes: 1.*Under any conditions, the total power of the product should not exceed the rated power. When the output voltage is increased, the total output power cannot exceed the rated output power, when the output voltage is decreased, the output current cannot exceed the rated output current;
2.*When measuring the full load efficiency, the fan should be connected to an external power supply. Fan loss is not included in the input power;
3.*LOF open frame series is also available, named LOF550-20Bxx ;
4.*25CFM refers to LOF550-20Bxx-C series external fan speed, forced air cooling 25CFM refers to the built-in fan speed, which automatically starts when the LOF550-20Bxx-CF series are turned on.

Input Specifications

Item	Operating Conditions		Min.	Typ.	Max.	Unit
Input Voltage Range	AC input		90	--	264	VAC
	DC input		127	--	370	VDC
Input Frequency			47	--	63	Hz
Input Current	115VAC		--	--	6.5	A
	230VAC		--	--	3.0	
Inrush Current	115VAC	Cold start	--	50	--	
	230VAC		--	80	--	
Power Factor	115VAC	Full load	0.98	--	--	--
	230VAC		0.95	--	--	--
Leakage Current	264VAC	Contact leakage current	<0.1mA			
		Earth leakage current	<0.5mA			
Hot Plug			Unavailable			

Output Specifications*

Item	Operating Conditions		Min.	Typ.	Max.	Unit
Output Voltage Accuracy*	Full load	12V/15V/18V/19V/24V/27V	--	±2	--	%
		36V/48V/54V	--	±1	--	
Line Regulation	Rated load		--	±0.5	--	
Load Regulation	0%-100% load		--	±1	--	mV
Ripple & Noise*	20MHz bandwidth (peak-to-peak value)		--	--	200	
Temperature Coefficient			--	±0.03	--	%/°C
Minimum Load			0	--	--	%
Hold-up Time	115VAC input		10	--	--	ms
	230VAC input		10	--	--	
Stand-by Power Consumption	Room temperature, 230VAC input, (PS_ON Low level)		--	--	0.5	W
Short Circuit Protection	Recover time <5s after the short circuit disappear		Hiccup, continuous, self-recover			
Over-current Protection			≥ 105%Io, Hiccup, self-recover			
Over-voltage Protection	12V		≤ 15.6VDC	Output voltage turn off, re-power on for recover		
	15V		≤ 19.5VDC			

MORNSUN®

MORNSUN Guangzhou Science & Technology Co., Ltd.

2021.11.12-A/5 Page 2 of 9

MORNSUN Guangzhou Science & Technology Co., Ltd. reserves the copyright and right of final interpretation







AC/DC 550W Enclosed Switching Power Supply

LOF550-20Bxx-C(-CF)Series

MORNSUN®

	18V		≤23.4VDC			
	19V		≤23.4VDC			
	24V		≤31.2VDC			
	27V		≤35.1VDC			
	36V		≤46.8VDC			
	48V		≤60.0VDC			
	54V		≤63.0VDC			
Over-temperature Protection			Protection when over-temperature, recover automatically after the temperature drops.			
Fan Power*	12V/15V/18V/19V/24V/27V/36V/48V/54V		Offer output power of 12V/0.5A			
PS_ON Input Signal*	Power on	PS_ON High	2	--	5	V
	Power off	PS_ON Low	0	--	0.5	
PG Signal*	Power on	The PG signal goes high with 10ms to 500ms delay after power set up	10	--	500	ms
	Power off/Power fail	The TTL signal goes low at least 1ms before output below 90% of rated value	1	--	--	
	High level	High	2	--	6	V
	Low level	Low	0	--	0.6	
Remote Sense	When RS+ and RS- are connected to the system, with function of remote voltage compensation, if not needed, left RS+ and RS- open					
5V Standby	5Vsb: The load capacity is 0.6A without fan, the load capacity is 1A with fan 25CFM; tolerance 2%, ripple: 120mVp-p(max.)					
Note: 1.*Output Voltage Accuracy: including setting error, line regulation, load regulation; 2.*The "Tip and barrel method" is used for ripple and noise test, output parallel 47uF electrolytic capacitor (Low ESR) and 0.1uF ceramic capacitor, please refer to AC-DC Converter Application Notes for specific information; 3.*For fan power connection method, please refer to 5, 6 in the external dimension drawing; 4.*For PS_ON, 5V standby connection method, please refer to CN6 in the external dimension drawing; 5.*For PG standby connection method, please refer to CN2 in the external dimension drawing; 6.*For all the above test items, please refer to our company standard "AC-DC Black Box Test Specification" for specific test specifications and methods;						

General Specifications

Item		Operating Conditions		Min.	Typ.	Max.	Unit	
Isolation Test	Input-output	Electric Strength Test for 1min. Leakage current<5mA		4000	--	--	VAC	
	Input - 			2000	--	--		
	output - 			1500	--	--		
Insulation Resistance	Input-output	Environment temperature: 25 ± 5℃, Relative humidity: <95%RH, non-condensing Testing voltage: 500VDC		100	--	--	M Ω	
	Input - 			100	--	--		
	output - 			100	--	--		
Isolation level	Input-output			2 x MOPP				
	Input - 			1 x MOPP				
	output - 			1 x MOPP				
Operating Temperature				-40	--	+70	℃	
Storage Temperature				-40	--	+85		
Storage Humidity		Non-condensing		10	--	95	%RH	
Operating Humidity				20	--	90		
Switching Frequency				--	--	--	KHz	
Power Derating	Operating Temperature derating	LOF550-20B12/15/18/19-CF		+50℃ to +70℃	3.1	--	% /℃	
		LOF550-20B24/27/36/48/54-CF		+50℃ to +70℃	3.25	--		
		25CFM	LOF550-20B12/15/18 /19-C	+50℃ to +70℃	2.5	--		--
			LOF550-20B24/27/ 36/48/54-C	+50℃ to +70℃	2.75	--		--

MORNSUN®

MORNSUN Guangzhou Science & Technology Co., Ltd.

2021.11.12-A/5 Page 3 of 9

MORNSUN Guangzhou Science & Technology Co., Ltd. reserves the copyright and right of final interpretation

AC/DC 550W Enclosed Switching Power Supply

LOF550-20Bxx-C(-CF)Series

MORNSUN®

		Air cooling (310W)	230VAC	+30℃ to +40℃	1	--	--	W/℃	
				+40℃ to +60℃	5	--	--		
			115VAC	+30℃ to +50℃	4.5	--	--		
				+50℃ to +60℃	6	--	--		
	Input voltage derating	90VAC -115VAC				1.0	--	--	%/VAC
		127VDC -160VDC				0.76	--	--	%/VDC
Safety Standard		12V/15V/24V/27V/36V/48V			ES60601-1 Safety Approval & EN62368-1, EN60601-1(Report); Design refer to IEC/UL/EN62368-1, GB4943.1, EN60335-1, ES/EN60601-1				
		18V/19V/54V			Design refer to EN/UL/IEC 62368-1, GB4943.1, EN/ES60601-1, EN60335-1				
Safety Class					CLASS I				
MTBF		MIL-HDBK-217F@25℃			>200,000 h				

Mechanical Specifications

Case Material	Metal (AL5052, SUS304)			
Dimension	130×86×43mm	LOF550-20Bxx-C	160×86×43mm	LOF550-20Bxx-CF
Weight	605g (Typ.)	LOF550-20Bxx-C	645g (Typ.)	LOF550-20Bxx-CF
Cooling Method*	310W Air cooling; 500W/550W 25CFM			
Notes: *Please refer to the product characteristic curve for cooling method and power derating.				

Electromagnetic Compatibility (EMC)*

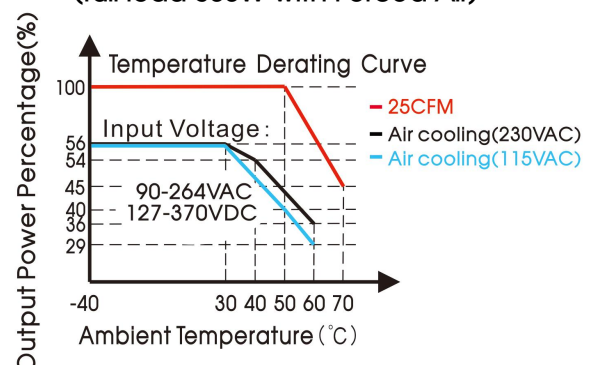
Emissions	CE	EN55032(CISPR32)/EN55011(CISPR11) CLASS B		
	RE	EN55032(CISPR32)/EN55011(CISPR11) CLASS B		
	Harmonic Current	IEC/EN61000-3-2 CLASS A and CLASS D		
	Flicker	IEC/EN61000-3-3		
Immunity	ESD	IEC/EN61000-4-2	Contact ±8KV/Air ±15KV	Perf. Criteria A
	RS	IEC/EN61000-4-3	10V/m	Perf. Criteria A
	EFT	IEC/EN61000-4-4	±2KV	Perf. Criteria A
	Surge	IEC/EN61000-4-5	line to line ±2KV, line to ground ±4KV	Perf. Criteria A
	CS	IEC/EN61000-4-6	10 Vr.m.s	Perf. Criteria A
	DIP IEC/EN61000-4-11 0%, 70%	DIP IEC/EN61000-4-11 0%, 70%		Perf. Criteria B

Notes: 1.*The power supply is considered a component as part of system, all EMC items are tested on a metal plate (L x W x H, 360mm x 360mm x 1mm). Power supply should be combined with final equipment for EMC confirmation.

Product Characteristic Curve

LOF550-20B12/15/18/19-C
(full load 500W with Forced Air)

LOF550-20B24/27/36V/48/54-C
(full load 500W with Forced Air)

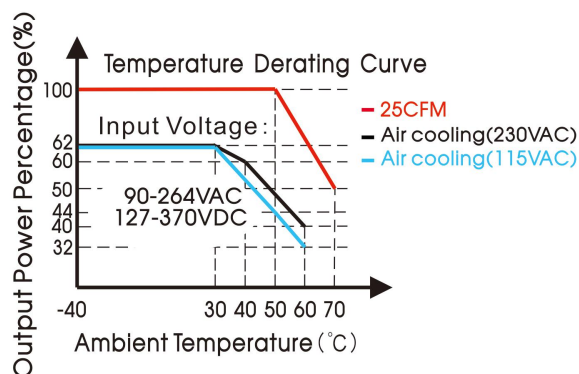


MORNSUN®

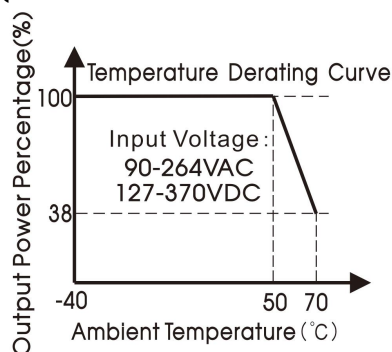
MORNSUN Guangzhou Science & Technology Co., Ltd.

2021.11.12-A/5 Page 4 of 9

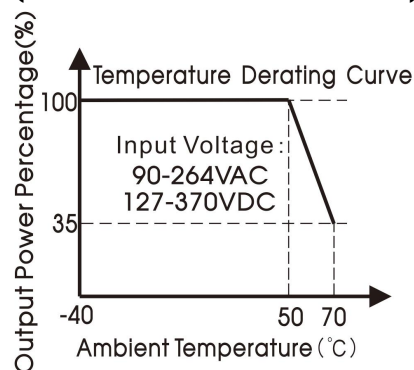
MORNSUN Guangzhou Science & Technology Co., Ltd. reserves the copyright and right of final interpretation



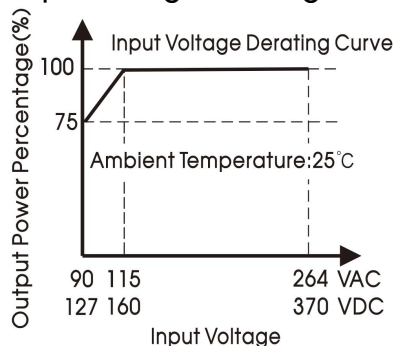
LOF550-20B12/15/18/19-CF
(full load 500W with Forced Air)



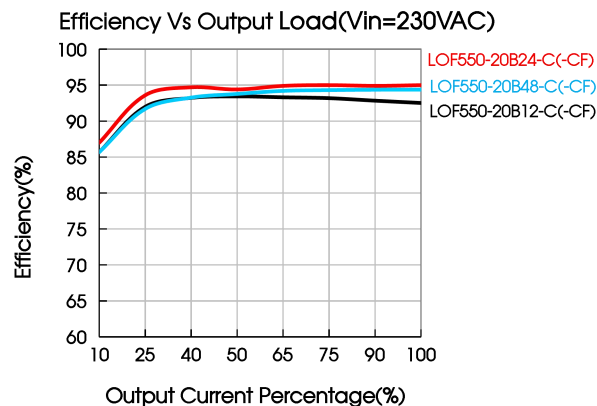
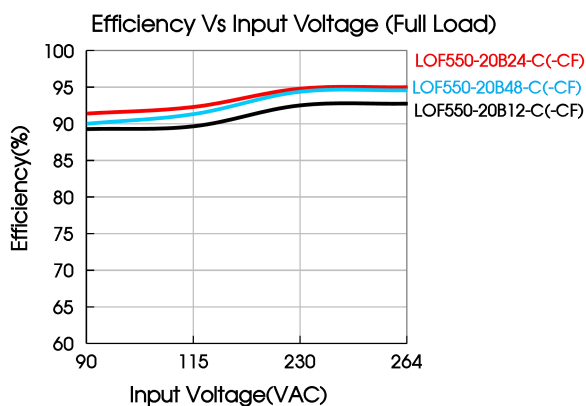
LOF550-20B24/27/36V/48/54-CF
(full load 500W with Forced Air)



LOF550-20Bxx-C(-CF)
Input Voltage Derating Curve

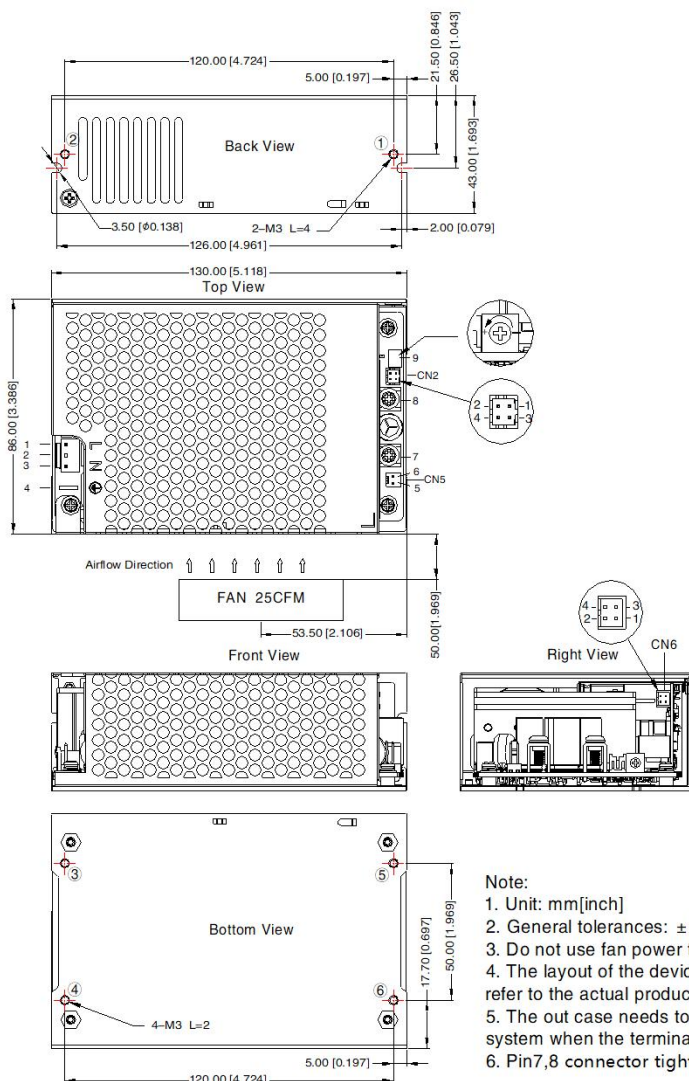


Note: With an AC input voltage between 90 - 115VAC and a DC input between 127 - 160VDC the output power must be derated as per the temperature derating curves



Dimensions and Recommended Layout

LOF550-20Bxx-C Series



THIRD ANGLE PROJECTION

Pin-Out		Customer Connector
Pin	Mark	
1	AC(L)	Housing: JST VHR or equivalent Contact: JST SVH-21T-P1.1 or equivalent
2	NC	
3	AC(N)	
4	⏏	Contact: JST SPS-21T-250
5	FAN+	CN5: Fan power output port Housing: TKP 2502 or equivalent Contact: TKP 8811 or equivalent
6	FAN-	
7	+Vo	
8	-Vo	
9	ADJ	Output adjustable resistor

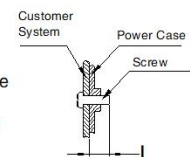
4-3	2-1	CN6: PS_ON signal input port(3-4) 5VDC Standby output(1-2)	
Pin-Out		Customer Connector	
Pin	Mark		
1	+5V	Housing: JST PHD-2*2Y or equivalent Contact: JST PHD-TE or equivalent	
2	GND		
3	PS-ON		
4	GND		

2-1	4-3	CN2: Remote sensing signal input port(1-2) PG signal(3-4)	
Pin-Out		Customer Connector	
Pin	Mark		
1	RS-	Housing: JST PHD-2*2Y or equivalent Contact: JST PHD-TE or equivalent	
2	RS+		
3	GND		
4	PG		

Position	Screw Spec.	L(max)	Torque(max)
①-②	M3	4mm	0.4N·m
③-④	M3	2mm	0.4N·m

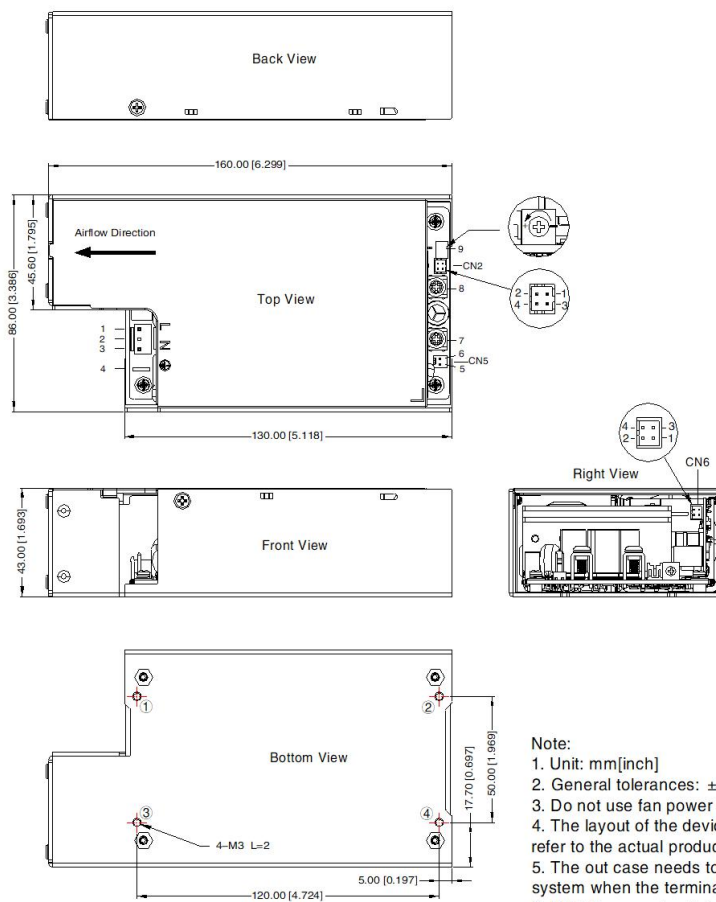
Note:

- Unit: mm[inch]
- General tolerances: $\pm 1.00 [\pm 0.039]$
- Do not use fan power to power other devices
- The layout of the device is for reference only, please refer to the actual product
- The out case needs to be connected to the earth of system when the terminal
- Pin7,8 connector tightening torque: M4, 1.2N·m(max)



LOF550-20Bxx-CF Series

THIRD ANGLE PROJECTION

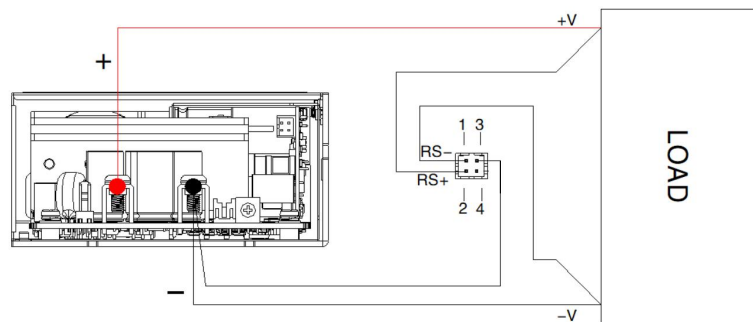
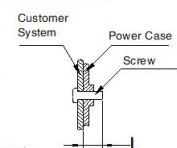


Pin-Out		Customer Connector
Pin	Mark	
1	AC(L)	Housing: JST VHR or equivalent Contact: JST SVH-21T-P1.1 or equivalent
2	NC	
3	AC(N)	
4		Contact: JST SPS-21T-250
5	FAN+	CN5: Fan power output port
6	FAN-	Housing: TKP 2502 or equivalent
7	+Vo	Contact: TKP 8811 or equivalent
8	-Vo	
9	ADJ	Output adjustable resistor

Pin-Out		Customer Connector
Pin	Mark	
1	+5V	Housing: JST PHD-2*2Y or equivalent Contact: JST PHD-TE or equivalent
2	GND	
3	PS-ON	
4	GND	

Pin-Out		Customer Connector
Pin	Mark	
1	RS-	Housing: JST PHD-2*2Y or equivalent Contact: JST PHD-TE or equivalent
2	RS+	
3	GND	
4	PG	

Position	Screw Spec.	L(max)	Torque(max)
① - ④	M3	2mm	0.4N·m



Note:

1.RS - and RS + cannot be shorted or reversed, otherwise the power module will be damaged;

- 2.The remote compensation function can compensate the voltage drop on the output cable, which includes the sum of the cable drop connected to the output positive terminal and the output negative terminal;
- 3.If you need to use remote compensation function, the signal pin needs to be connected with the load and with a twisted pair.

Note:

1. For additional information on Product Packaging please refer to www.mornsun-power.com. Packaging bag number: 58220219 (LOF550-20Bxx-C); 58220220 (LOF550-20Bxx-CF);
2. Unless otherwise specified, parameters in this datasheet were measured under the conditions of $T_a=25^{\circ}\text{C}$, humidity<75%RH with nominal input voltage and rated output load;
3. All index testing methods in this datasheet are based on our company corporate standards;
4. In order to improve the efficiency, there will be audible noise generated when working at light load, but it does not affect product performance and reliability;
5. We can provide product customization service, please contact our technicians directly for specific information ;
6. Products are related to laws and regulations: see "Features" and "EMC";
7. The out case needs to be connected to PE (\oplus) of system when the terminal equipment in operating;
8. CAUTION: Double pole, neutral fusing. Disconnect mains before servicing."/"/ATTENTION: Double pôle/fusible sur le neutre. Débrancher

l'alimentation avant l'entretien;

9. Our products shall be classified according to ISO14001 and related environmental laws and regulations, and shall be handled by qualified units;
10. The power supply is considered a component which will be installed into a terminal equipment. All EMC tests should be confirmed with the final equipment. Please consult our FAE for EMC test operation instructions.

Mornsun Guangzhou Science & Technology Co., Ltd.

Address: No. 5, Kehui St. 1, Kehui Development Center, Science Ave., Guangzhou Science City, Huangpu District, Guangzhou, P. R. China
Tel: 86-20-38601850 Fax: 86-20-38601272 E-mail: info@mornsun.cn www.mornsun-power.com