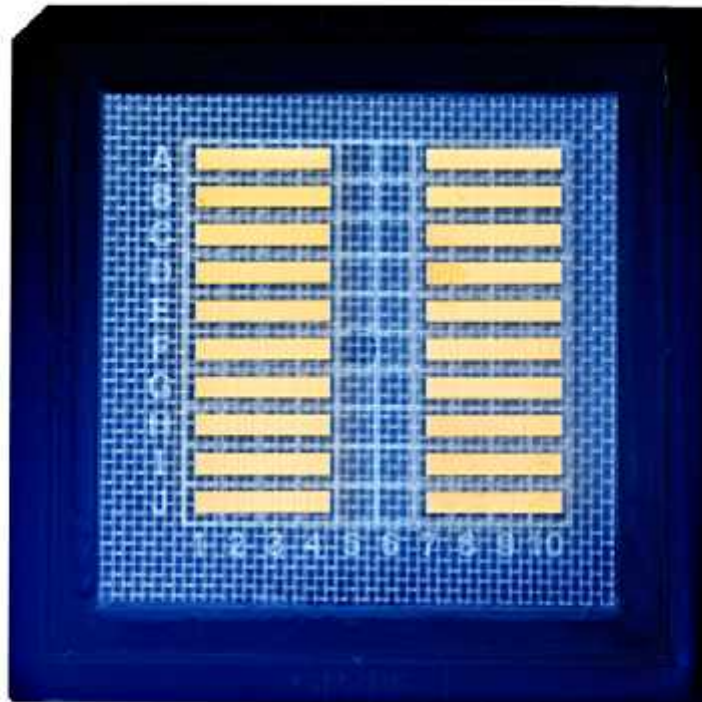


High Power 200W 808nm Laser Chip Laser Bare Bar



Data Sheet

Item No:LC808SB200

Item Name:High Power 200W 808nm Laser Chip Laser Bare Bar

Operation

Center Wavelength	808nm
Output Power	200W
Operation Mode	QCW

Geometrical

Emitter width	120um
Cavity length	1500um
Chip Height	120um
Emitter Pitch	160um

Electro Optical Data

Threshold current	25A
Operating current	190A
Operating voltage	1.9V
Slope efficiency	1.2W/A
Total conversion efficiency	55%
Slow axis divergence	12
Fast axis divergence	39
Spectral width	4nm
Polarization	TE