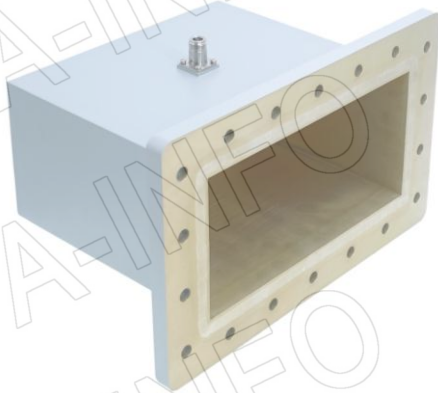


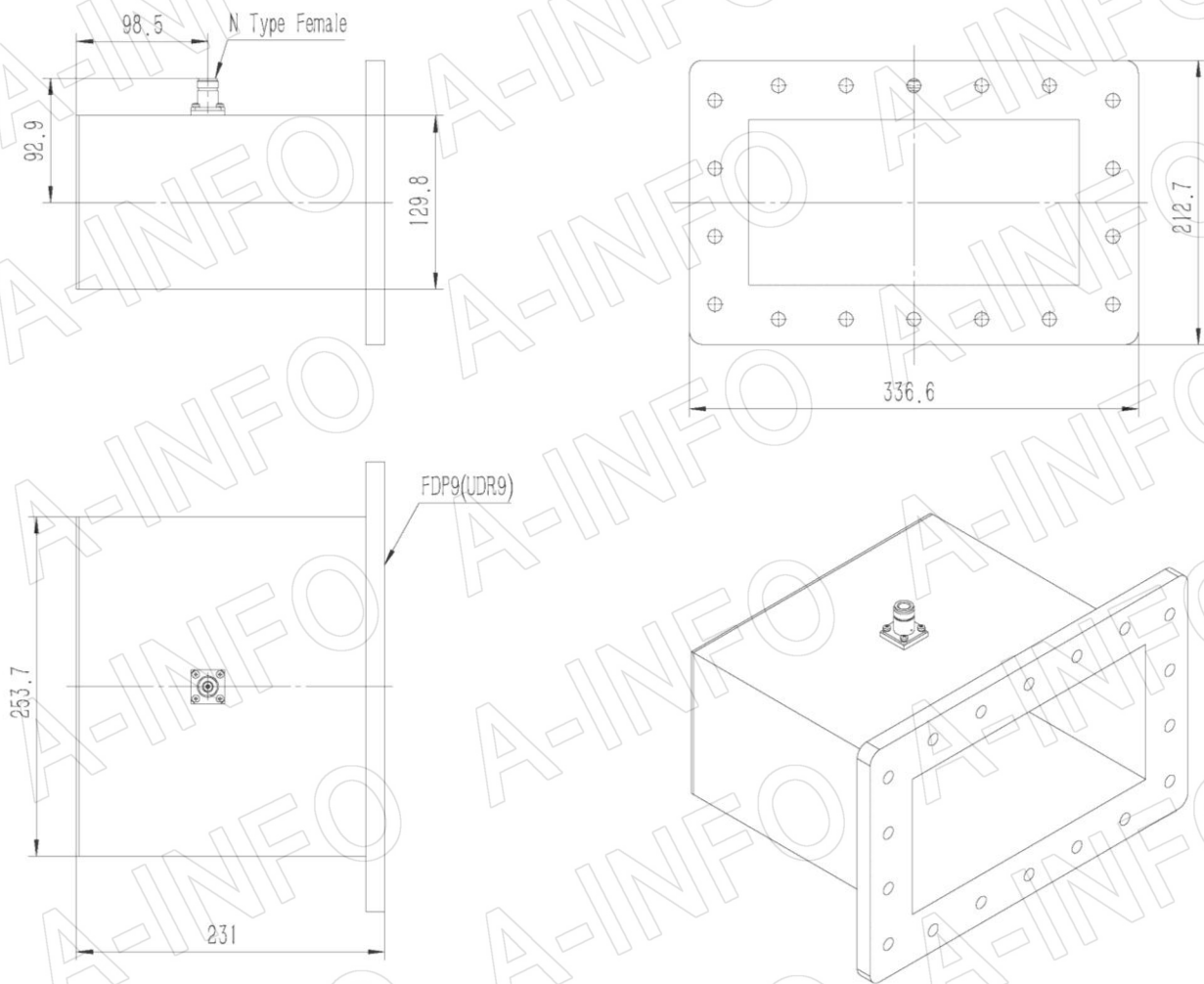
For reference only. See data sheet for the detailed specifications.

Technical Specification

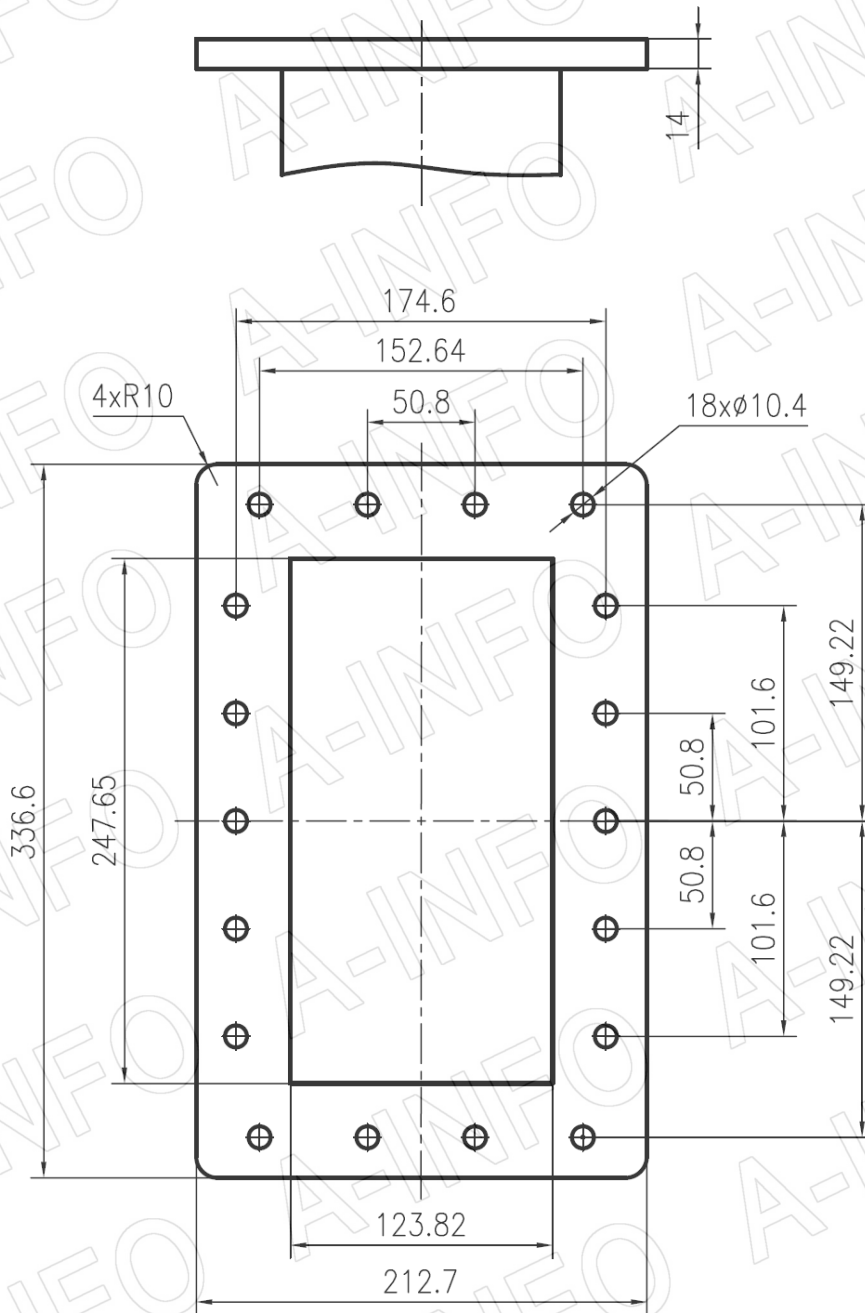


EIA WR	WR975
Frequency Range(GHz)	0.75 – 1.12
Insertion Loss(dB)	0.09 Max.
VSWR	1.25:1 Max.
Flange	FDP9(UDR9)
Connector	N-Female
Average Power(W CW)	300 Max.
Peak Power(KW)	3
Material	Al
Size(mm)	231 x 336.6 x 212.7
Net Weight(Kg)	3.65 Around

Outline Drawing (Size: mm)



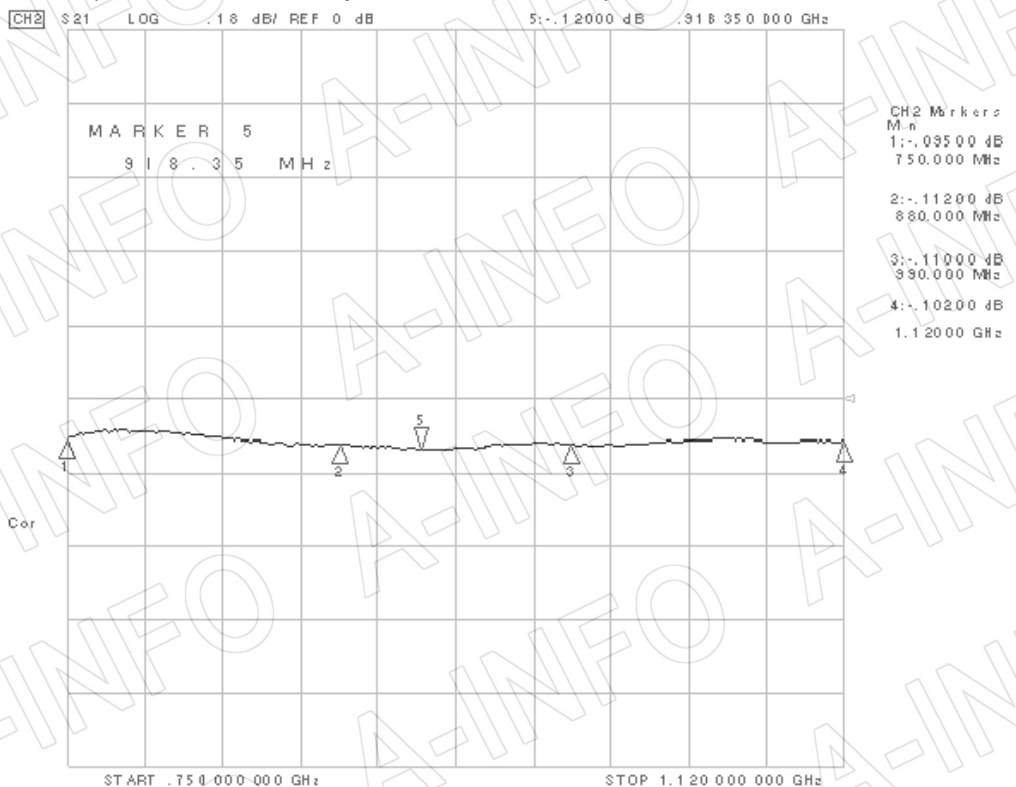
Flange Drawing (Size: mm)



FDP9

Test Results

Insertion Loss (Test with two adapters back to back)



VSWR

