



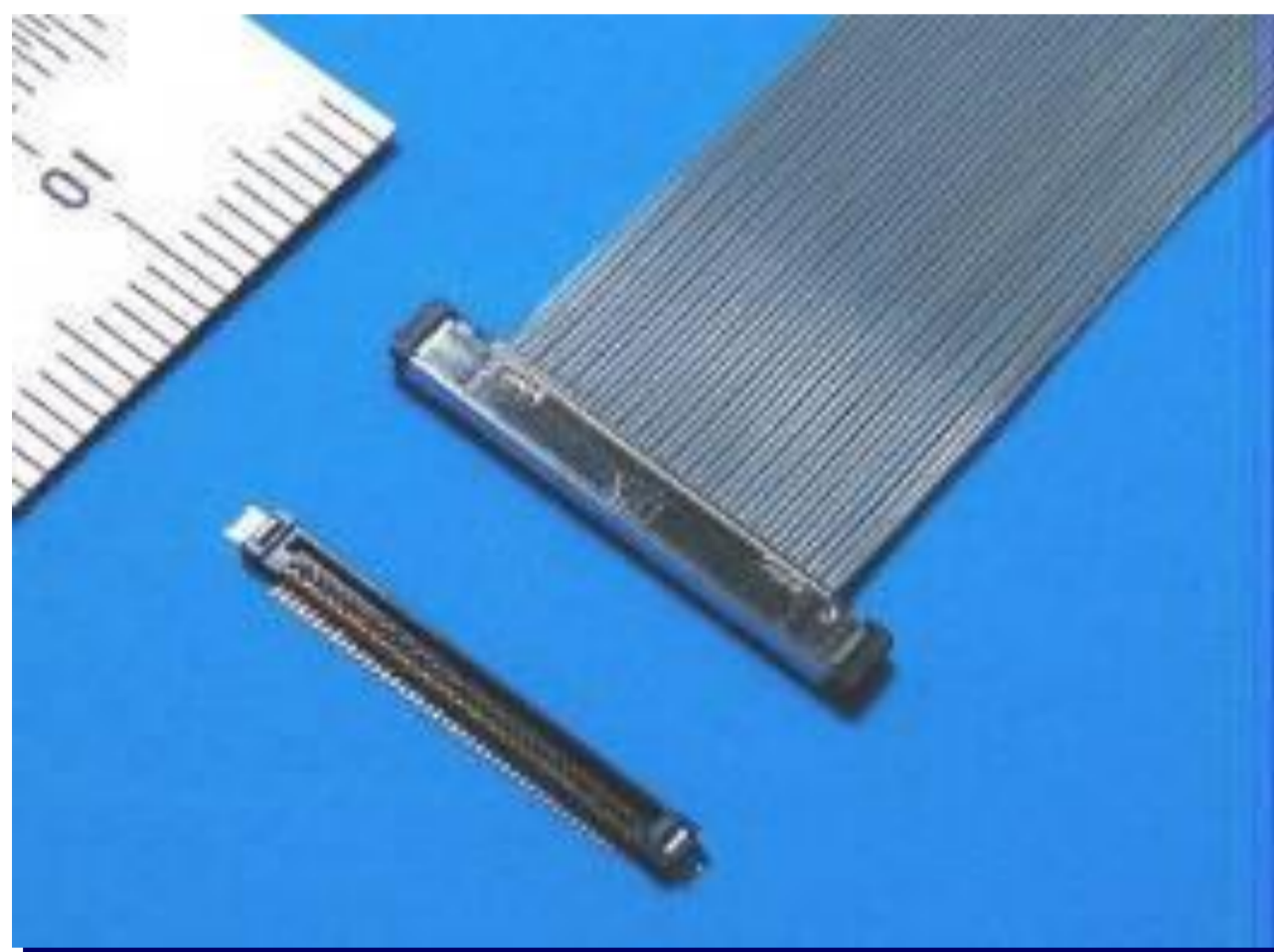
CABLIN[®]-SS

Small Gauge Coaxial Connector

CABLINE[®]-SS : Specifications

Standard small gauge coaxial connector with various pin counts

Segment : Notebook PC / Tablet PC / DVC / DSC



CABLINE[®]-SS

■ Name	CABLINE [®] -SS
■ Pitch	0.4 mm
■ Pin count	10, 14, 20, 30, 32, 35, 40, 50 pin
■ Mating type	Vertical type
■ Mating Height	1.65 mm (Nominal) / 1.85 mm (Maximum)
■ Mating Depth	3.0 mm
■ Mating Width	21.8 mm (40 pin)
■ Wire	Micro-coax AWG#42, 40, 36 Discrete AWG#36,34

CABLINE[®]-SS : Features

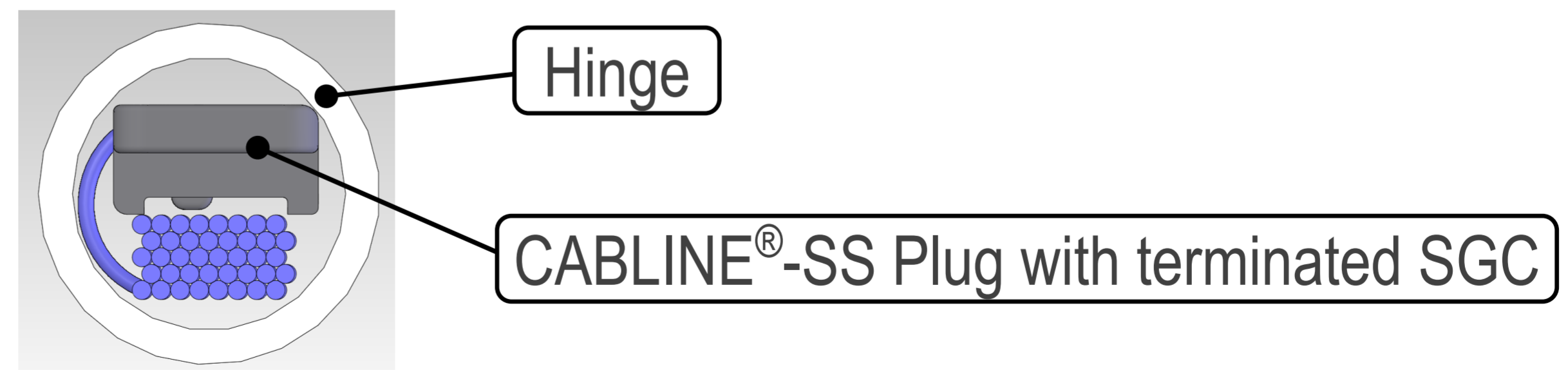
1. Pass through small hinge hole
2. Higher reliable connection

1. Pass through small hinge hole

Small vertical mating type connector for small hinge assembly after cable termination



Side View

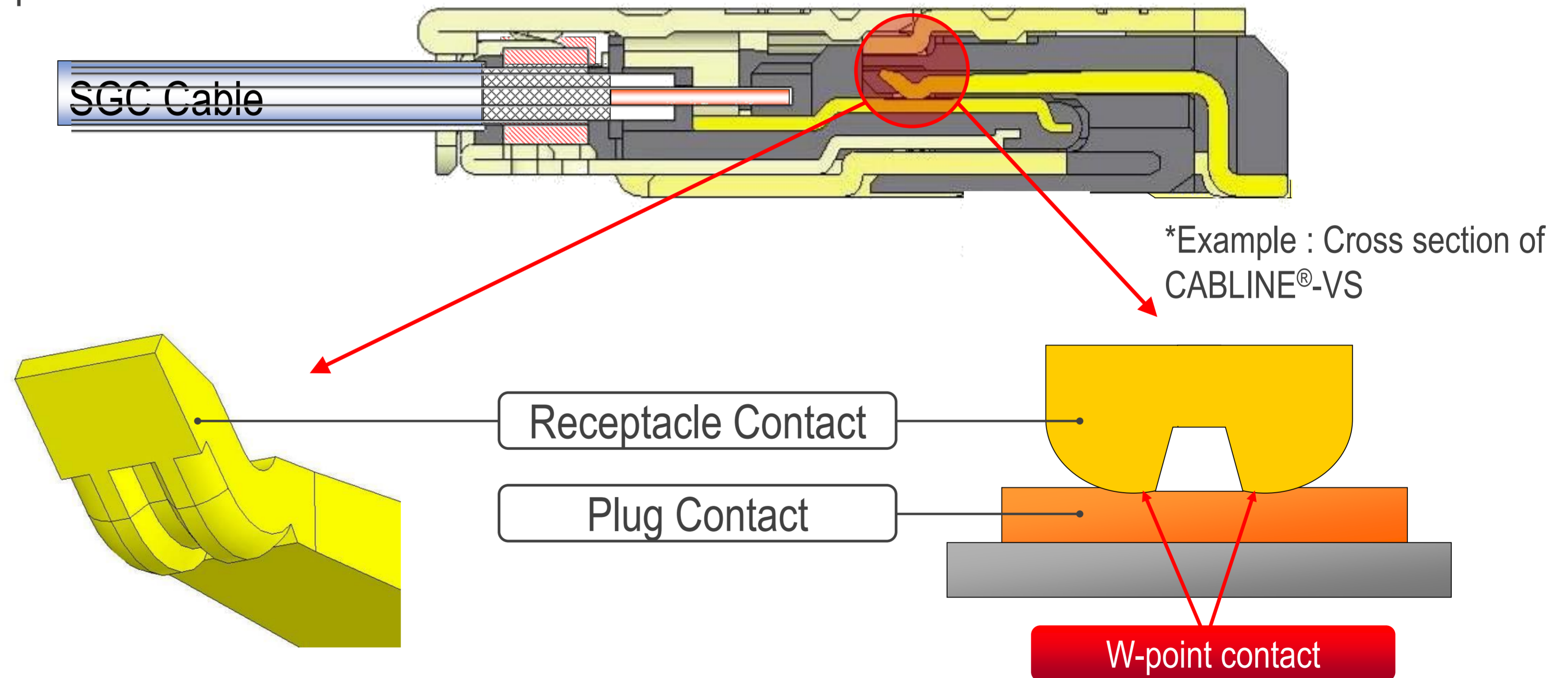


2. Higher reliable connection

W-point contact (High reliability technology)

Cylindrical shape with two contact points

1. Resist flux and powder
2. Lower contact resistance



Cylinder Shape (2 point)

Plug & Receptacle Contact Mated Cross Section

Summary

- ✓ Pass through small hinge hole
- ✓ Higher reliable connection by I-PEX's unique W-Point contact structure

Appendix-1. CABLINE[®]-SS : Specifications

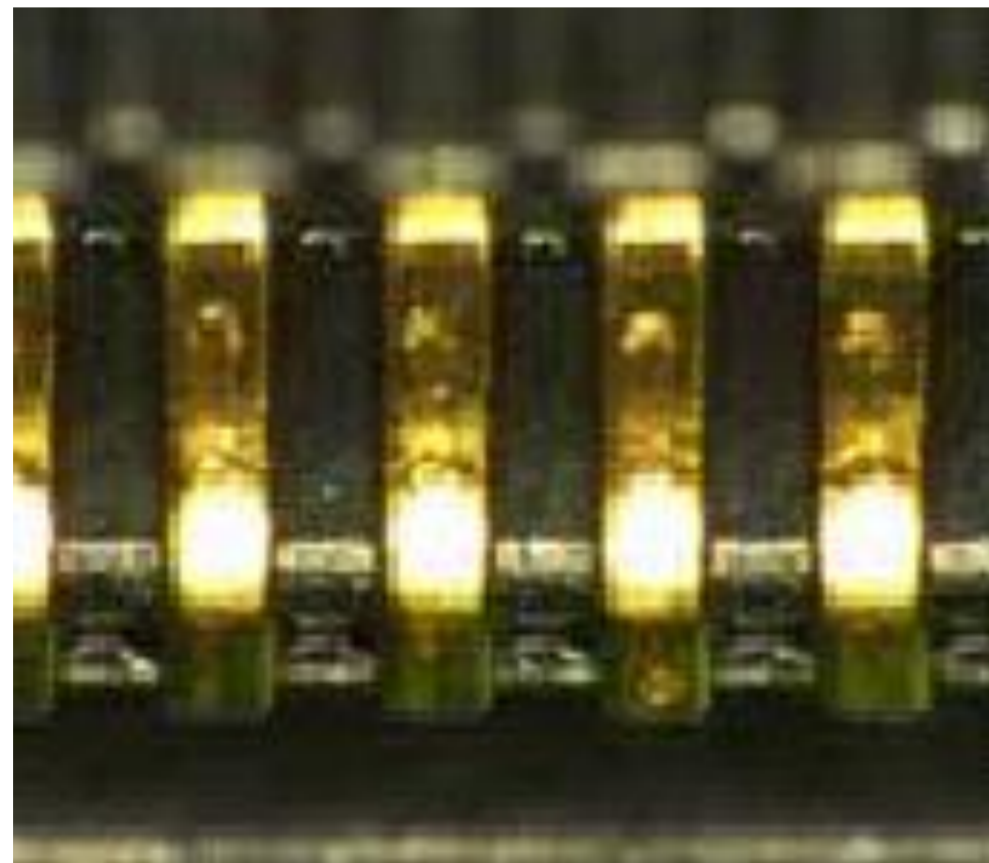
■ Rated current	0.1A AC/DC
■ Rated voltage	50V (per contact)
■ Operating Temperature	-40°C to +85°C
■ Dielectric Withstanding Voltage	*Please contact our sales for details
■ Insulation Resistance	*Please contact our sales for details
■ Contact Resistance	Ground Shell : 50m ohm / max.
■ Durability cycles	30 cycles
■ Mating Height (MAX.)	1.65 mm (1.85 mm)
■ Mating Depth	3.00 mm
■ Mating Width	21.8 mm (40 pin)
■ Applicable Wire	Micro-coax AWG#42, 40, 36 Discrete AWG#36,34

Appendix-2. W-point contact confirmation of effect (1)

Attachment test of Flux

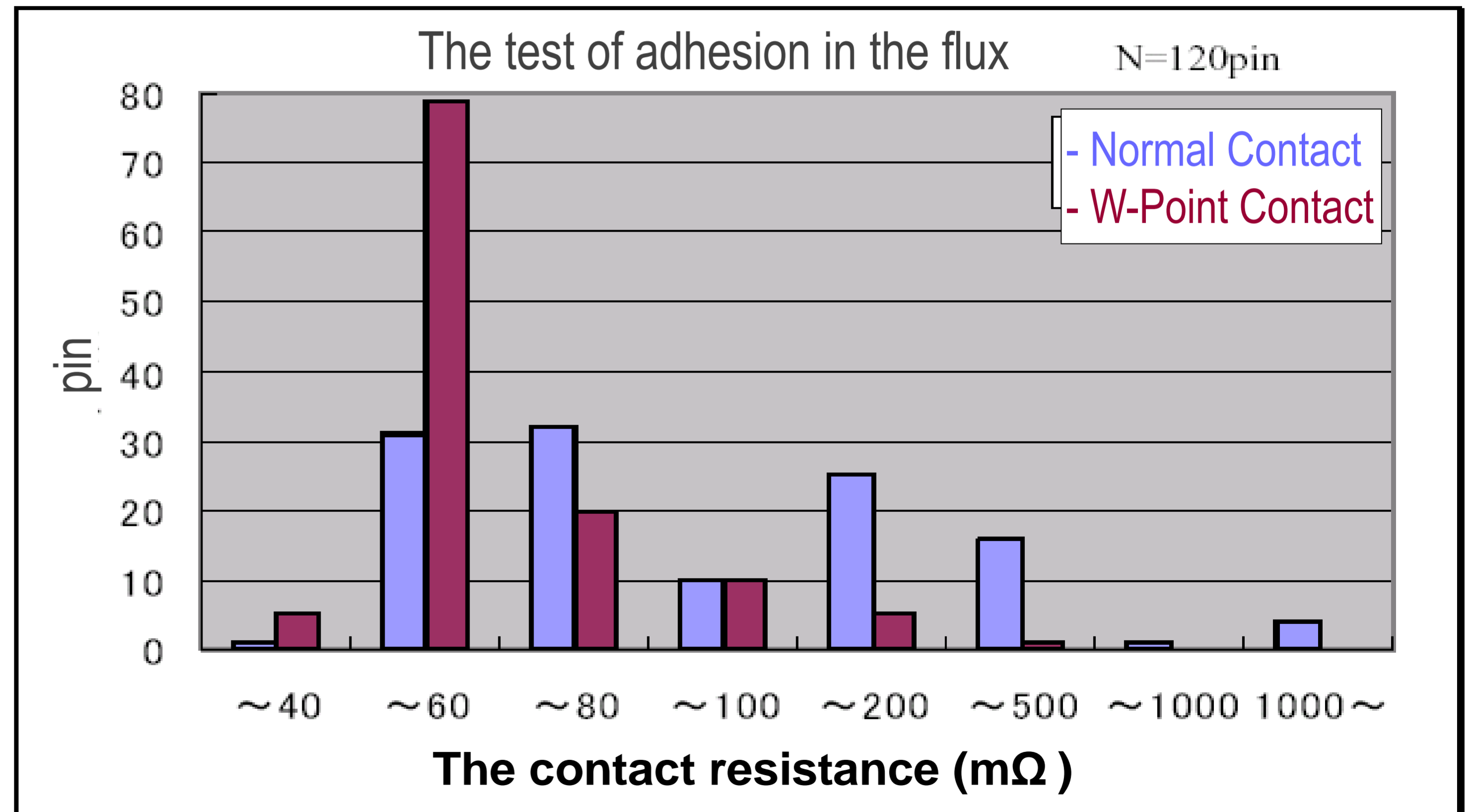
After dipping Plug into Flux in 1 minutes and dry it for 24 hours, we match with Rece and measure contact resistance.

Flux application : Tamura Corporation MH-820V



Test Result

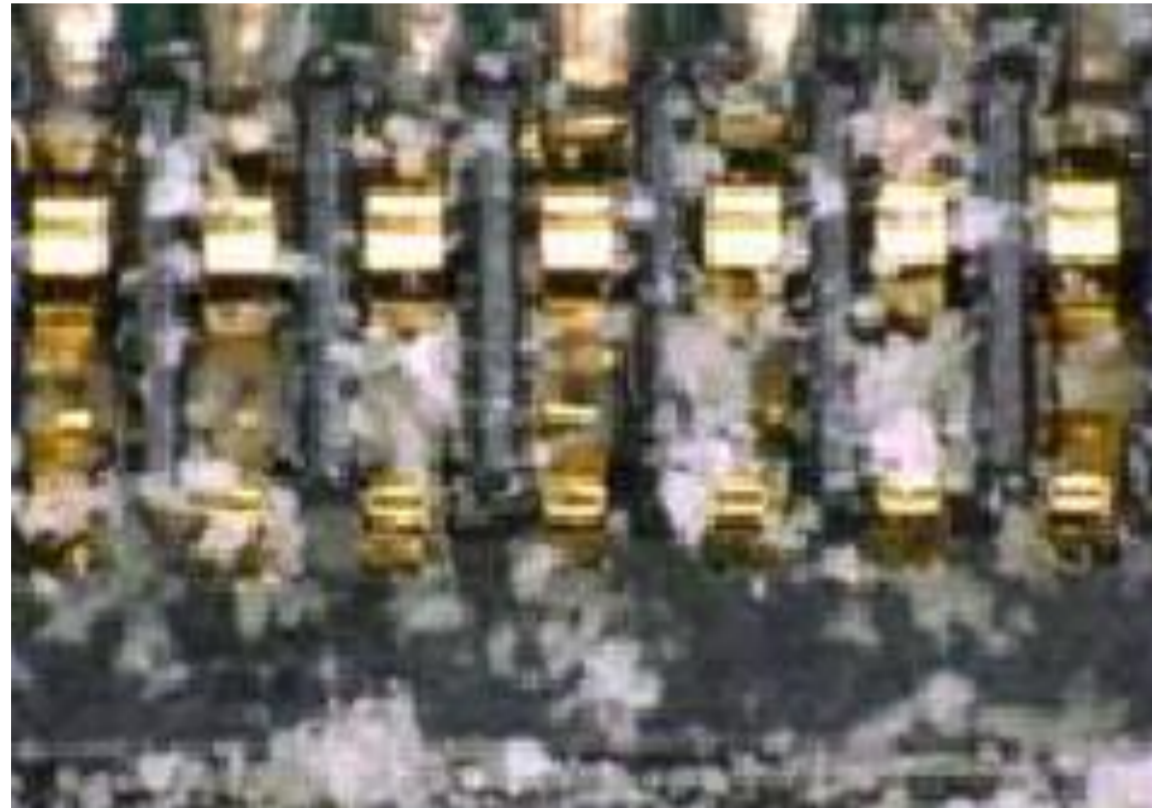
W-point CT did not find any conduction defect.



Appendix-3. W-point contact confirmation of effect (2)

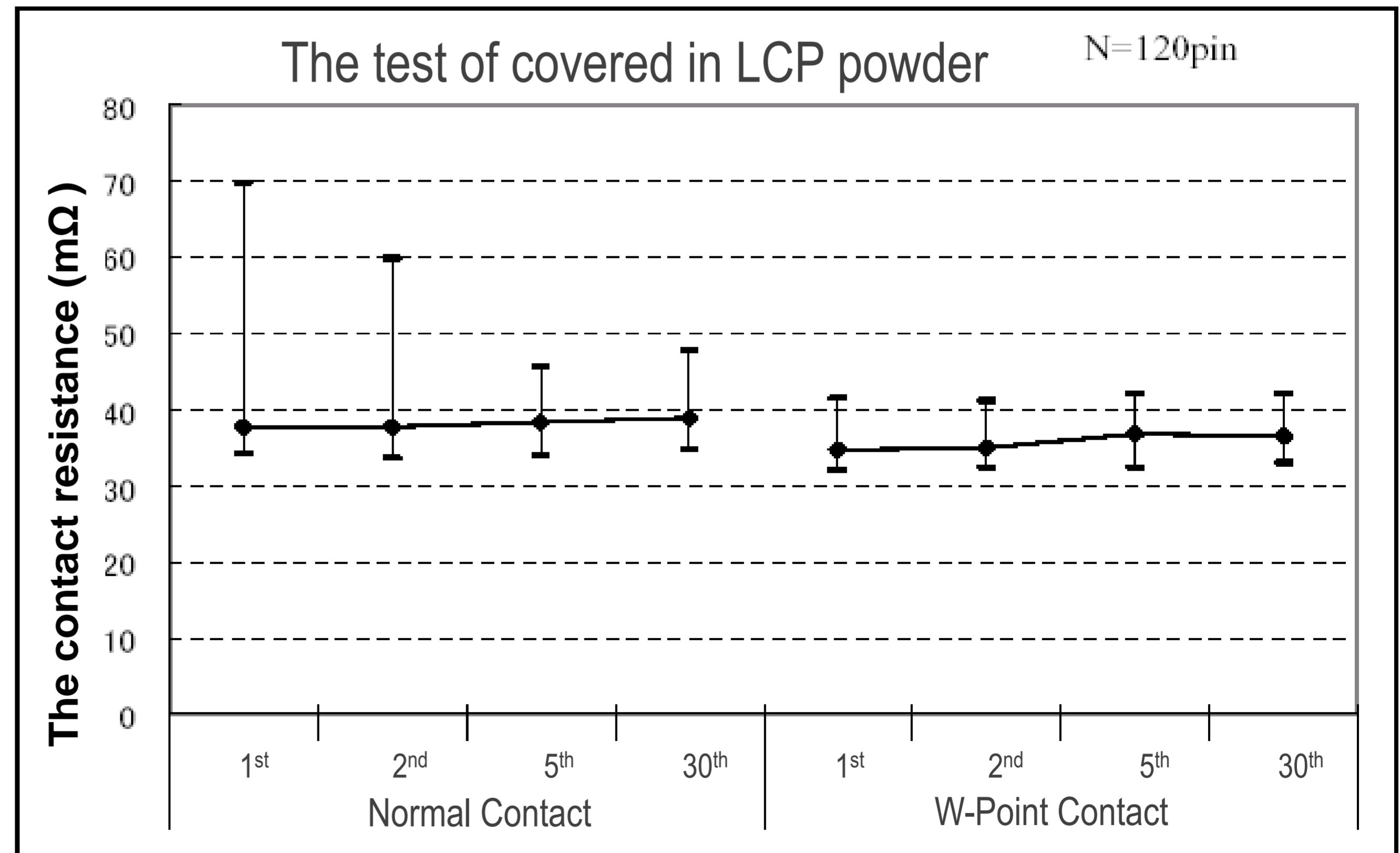
LCP Powder Dust Test

After spreading powder dust as picture on the Rece, we measure contact resistance of 1, 2, 5, 30 times with matching with Plug.



Test Result

LCP Powder Dust effect of W-point contact is much less than common product.





I-PEX is a trademark of DAI-ICHI SEIKO Co., Ltd. All other trademarks are owned by their respective companies.
All specifications of the products shown here are subject to change without notice. DAI-ICHI SEIKO Co., Ltd., assumes no responsibility for any inaccuracies or obligation to update Information on these documents.

www.i-pex.com