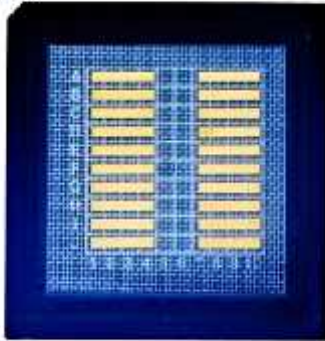


1470nm 8W Mini Bar Laser Chip

Brandnew Technology Comapny provide 1470nm 8W Mini Bar Laser Chip, with 6 emitters and 18% filling factor. This product is easily assembled using standard soldering methods. Upon to your request, We can encapsulate it as TO Mount, CS Mount. In addition, the chip also adopts new epitaxial structure design and material epitaxy, advanced non-pump window design and preparation technology. It ensures its reliability, stability and long life.



Feature:

1470nm wavelength, 8W output power
6 emitters, 18% filling factor
Can be packaged as TO Mount, CS Mount
Wide variety of bar configurations
Stable and reliable performance

Application:

Laser lighting
Industry pumping
Range finder sensors
Lidar Applications
Medical Application

Data Sheet

Item No: LC1470SB8

Item Name: 1470nm 8W Mini Bar Laser Chip

	Min	Typ	Max
Optical			
Central Wavelength	1460nm	1470nm	1480nm
Output Power		8W	
Working Mode		QCW	
Spectrum Width		3nm	
Number of Emitter		6	
Emitter Width		96um	
Emitter Pitch		500um	
Filling Factor		18%	
Bar Width		10000um	
Cavity Length		2um	
Thickness		0.15um	
Fast Axis Divergence(FWHM)		39deg	
Slow Axis Divergence (FWHM)		12deg	
Polarization Mode		TE	
Slope Efficiency		1.05W/A	
Electrical			
Operating Current Iop		24A	
Threshold Current Ith		2A	
Operating Voltage Vop		1.4V	
Conversion Efficiency		40%	
Thermal			
Operating Temperature		25°C	
Wavelength Temperature Coefficient		0.30nm/°C	

