

## 100W 1064nm Single Bar Laser Chip

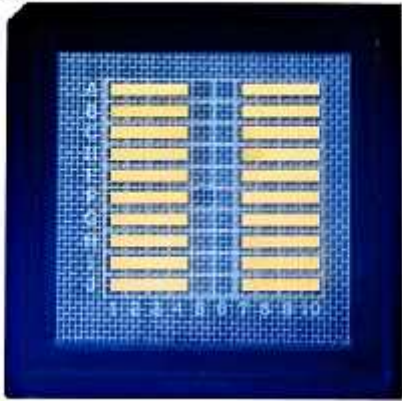
New single bar laser chip, CW/QCW working mode with 47 emitters, bar length 10mm. The long range well-focused beam of this chip is suitable for digital/analog equipment and 3d display. We'll match your specifications to our standard products, or evaluate modified designs to meet your special applications.

### Feature

1.5mm cavity length, 100um emitter width  
Working mode: CW/QCW, bar length 10mm  
Optimized epitaxial structure design  
Unique technology for highest reliability and lifetime

### Application

Fiber Laser Pumping Source  
Autonomous Driving Lidar  
Free space optical communication  
Laser lighting



### Date sheet

Item No.: LC1064SB100

Item Name: 100W 1064nm Single Bar Laser Chip

Optical	Typ
Central Wavelength	1064±10nm
Output Power	100W
Working Mode	CW/QCW
Emitter Quantity	47
Emitter Width	100um
Emitter Pitch	200um
Cavity Length	1.5mm
Bar Length	10mm
Electrical	
Operating Current Iop	110A
Threshold Current Ith	15A
Operating Voltage Vop	2V
Thermal	
Test Temperature	25°C
Storage Temperature	0~55°C
Wavelength Temperature Coefficient	0.3nm/°C