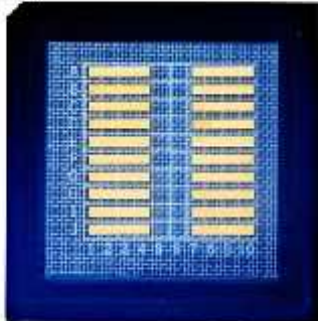


80W 755nm QCW Multi Emitter Laser Bar

80W QCW Multi Emitter Laser Bar Chip with 755nm. On this power and wavelength, we can encapsulate it in the form of CS Mount, and also can be used in stacked array. Mostly for laser beauty machine handle repair and replacement. We strictly monitor the production of our semiconductor products in clearly defined processes. Make sure it has the highest quality.



Feature:

- Multi Emitter Laser Chip, 23 emitters
- Wide variety of bar configurations
- Excellent Solderability
- High temperature resistance characteristics
- High Brightness and high reliability

Application:

- Dermatology and Surgery
- Fiber Laser Pumping
- Laser Printing
- Laser Illumination

Data Sheet

Item No: LC755SB80

Item Name: 80W 755nm QCW Multi Emitter Laser Bar

Optical	Min	Typ	Max
Central Wavelength	750nm	755nm	760nm
Output Power		80W	
Working Mode		QCW	
Spectrum Width		10nm	
Emitter Width		190um	
Emitter Pitch		500um	
Filling Factor		48%	
Bar Width		10000um	
Cavity Length		1500um	
Thickness		150um	
Fast Axis Divergence(FWHM)		39deg	
Slow Axis Divergence (FWHM)		12deg	
Polarization Mode		TE	
Slope Efficiency		1.15W/A	
Electrical			
Operating Current Iop		86A	
Threshold Current Ith		10A	
Operating Voltage Vop		1.9V	
Conversion Efficiency		40%	
Thermal			
Operating Temperature		25°C	
Wavelength Temperature Coefficient		0.30nm/°C	

