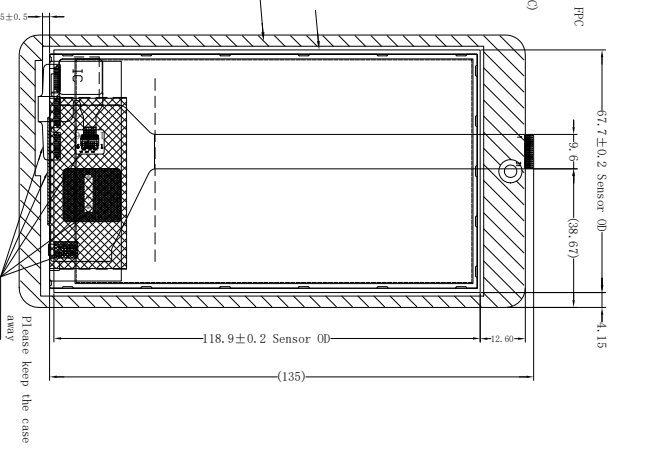
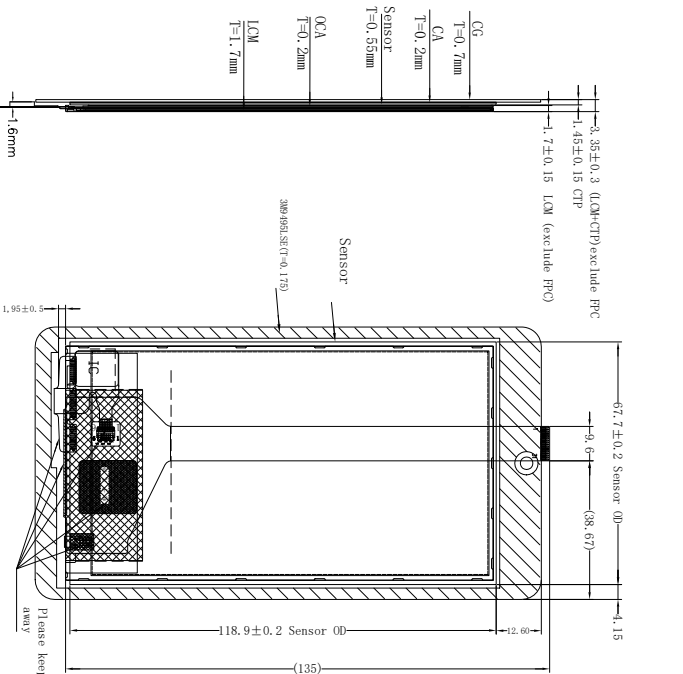
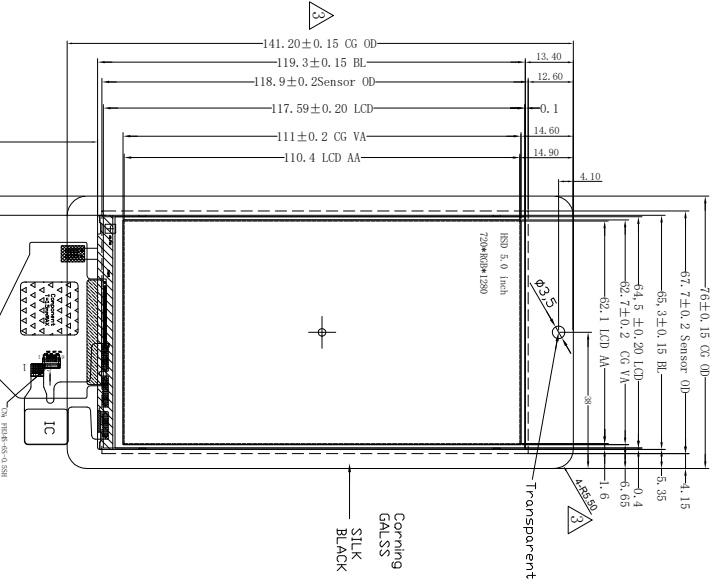
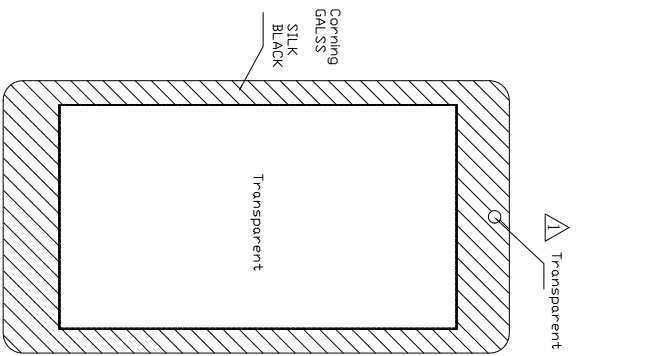


LCM+CTP

Front view

Side view

Back view



FPC bending diagram
FPC bending shipping

Display Pin Interface

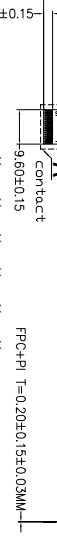
1	GND
2	TOUCH_3V3
3	GND
4	TOUCH_INT
5	TOUCH_RST
6	TOUCH_SDA
7	TOUCH_SCL
8	GND
9	LED-
10	LED+
11	ID
12	RSTN
13	NC
14	IOVCC_1.8
15	VCC_2.8
16	GND
17	D3P
18	D3N
19	GND
20	D2P
21	D2N
22	GND
23	CKP
24	CKN
25	GND
26	D1P
27	D1N
28	GND
29	D0P
30	D0N
31	GND

mipi interface

TP-PIN	Pin	Name
1	VDD(3.3V)	1
2	GND	2
3	INT(3.3V)	3
4	RST(3.3V)	4
5	SDA(3.3V)	5
6	SCL(3.3V)	6

- CTP NOTE:
1. LENS+OCA+ITO GLASS+FPC
 - ITO GLASS: 0.55mm
 - LENS GLASS: 0.7mm, Asahi:
 - IC: GT911
 2. Operation Voltage: CTP_VCC 2.8V-3.3 V
 3. Transmittance: $\geq 80\%$
 4. The cover hardness: 6H
 - *5. Please add pull-up resistors on the motherboard for SDA and SCL

COVER GLASS (0.7mm)
OCA(0.2mm)
SENSOR GLASS (0.55mm)
OCA(0.2mm)
LCM (1.7mm)
LCM+CTP/OCA bonding



12 LED Circuit diagram

- Notes:
1. Display : 5.0"HD, HSD, TFT-IPS
 2. Resolution: 720xRGBx1280
 3. LCD Viewing Direction: ALL
 4. Display Mode: Normally Black/Transmissive
 5. LCD Driver: HX8394F (without RAM) need to be adjusted by customer motherboard for landscape use.
 6. LCM birghtness average: 260cd/m²(min), 300cd/m²(typ) Uniformity $\geq 80\%$
 7. General Tolerance: ± 0.2
 8. OPERATING TEMP: $-10^{\circ}\text{C}^{\sim}+60^{\circ}\text{C}$
 9. STORAGE TEMP: $-20^{\circ}\text{C}^{\sim}+70^{\circ}\text{C}$
 10. Requirements on Environmental Protection: ROHS

1	Update radius and size of the glass	2022.06.14	Ian
2	Change the driver IC and cover material	2022.03.28	Ian
3	Update camera lens position	2022.03.25	Ian
4	First issue	2021.9.16	Allien
REV	DESCRIPTION	DATE	NAME

LEADTEK COMPANY LIMITED

SCALE: 1/1	UNIT: mm	PAGE: 1/1	Approve	Check	Drawn
Part No: LTK050H3146W-08QC	VER: V3			steven	Ian
Customer No:					